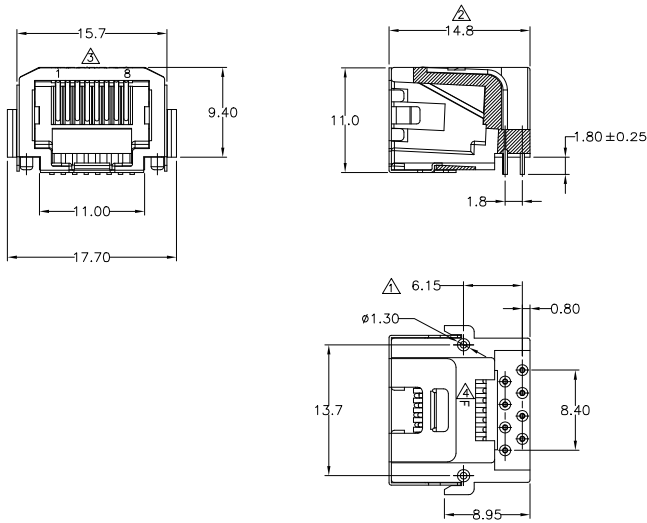


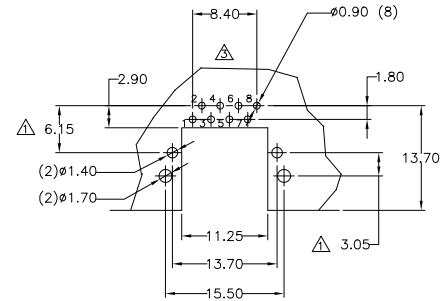
A1RFRD10



REVISION RECORD				
REV	ECO	DESCRIPTION	DRFT	CHKD
△		CHANGE PC BOARD LAYOUT	MAN 8/21/00*	
△		MODIFY DIMENSION	CH 10/11/01*	
△		ADD PIN NO.	CH 12/30/02*	
△		MODIFY DIMENSION	SH 4/27/04*	
△		ADD PART NUMBER	SH 5/31/04*	

NOTES:

- ELECTRICAL:**
- VOLTAGE RATING : 125 VAC RMS.
  - CURRENT RATING : 1.5 AMP.
  - CONTACT RESISTANCE : 30 MILLIOHMS MAX.
  - INSULATION RESISTANCE : 1000 MEGOHMS MIN @ 500 VDC
  - DIELECTRIC STRENGTH : 1000 VAC RMS 60HZ, 1MIN.
- MECHANICAL:**
- HOUSING MATERIAL : GLASS FILLED POLYESTER UL94V- 0.
  - CONTACT MATERIAL : PHOSPHOR BRONZE  $\phi 0.46\text{mm}$
  - PLATING : GOLD PLATING OVER NICKEL.
  - OPERATING LIFE : 750 CYCLES MIN.
  - PCB RETENTION PRE-SOLDER : 1 LB MIN.
  - PCB RETENTION POS-SOLDER : 10 LBS MIN.
- ENVIRONMENTAL:**
- STORAGE : -40°C TO +80°C
  - OPERATION: 0°C TO +70°C
- MATES WITH MODULAR PLUG CONFORMING TO FCC PART 68, SUBPART F.  
PART NUMBER: E6688-2X0X2X



PC BOARD Thickness=0.60 ~ 0.80mm  
PC BOARD LAYOUT COMPONENT SIDE SHOWN

MM (INCH)		DFTO CHI	DATE 07/05/01*	FULL RISE ELECTRONIC CO., LTD	
TOLERANCES EXCEPT AS NOTED		CHKD WILLEN	DATE 05/31/04*	TITLE	
MM		INFO	DATE	RJ45-66DIP(8P)	
.0 ± 0.2		APPL VXF	DATE 05/31/04*	DRAWING NO. GE663A03	
.00 ± 0.15		MATERIAL :		SIZE A3	
.000 ± 0.075		FINISH :		REV 5	
ANGLES ± 0.5		QTY :		8/31/04*	
THIRD ANGLE PROJECTION		SCALE : 2:1		DO NOT SCALE DRAWING	
		SHEET 1		OF 1	

8 | 7 | 6 | 5 | 4 | 3 | 2 | 1