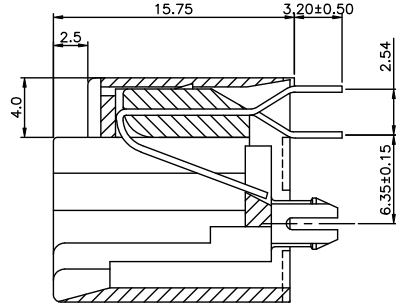
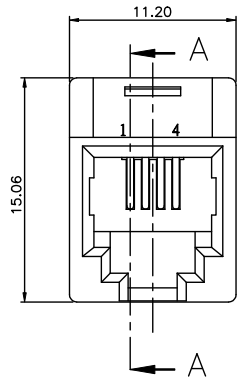
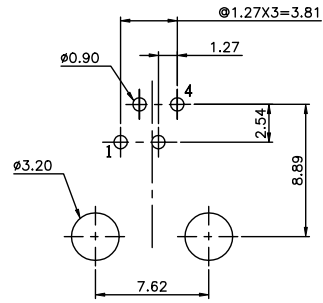
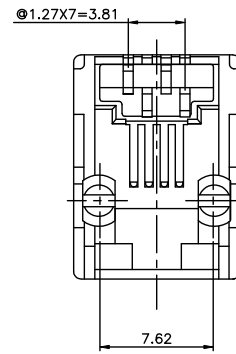


D1RFRD006

REVISION RECORD				
REV	ECC	DESCRIPTION	DRFT	CHKD
△		DESIGN MODIFY	2/19/2002	
△		ADD PART NO	6/10/2002	
△		NOTES MODIFY	10/22/04	



SECTION A-A



PCB LAYOUT

NOTES:

ELECTRICAL:

1. VOLTAGE RATING : 125 VAC RMS.
2. CURRENT RATING : 1.5 AMP.
3. CONTACT RESISTANCE : 30 MILLIOHMS MAX.
4. INSULATION RESISTANCE: 500 MEGOHMS MIN @ 500 VDC.
5. DIELECTRIC STRENGTH : 1000 VAC RMS 60Hz, 1MIN.

MECHANICAL:

1. HOUSING MATERIAL : GLASS FILLED POLYESTER UL94V-0.
2. CONTACT MATERIAL : PHOSPHOR BRONZE t=0.35mm.
- △ 3. PLATING : GOLD PLATING OVER NICKEL.
- △ 4. OPERATING LIFE : 750 CYCLES MIN.
5. PCB RETENTION PRE-SOLDER : 1 LB MIN.
6. PCB RETENTION POST-SOLDER: 10 LBS MIN.

ENVIRONMENTAL:

1. STORAGE : -40°C TO +85°C.
 - △ 2. OPERATION: -40°C TO +85°C.
- MATES WITH MODULAR PLUG CONFORMING TO
FCC PART 68, SUBPART F.
CUL FILE NO. E163191

- PART NUMBER: E5244-700X4X
- | | |
|---------|---------|
| 1- 3u" | 2- 6u" |
| 3- 15u" | 4- 30u" |
| 5- 50u" | |
- △ 0--A06-0100
△ 4--A06-0110
6--A06-0350

← MM (INCH) → TOLERANCES EXCEPT AS NOTED .0 ± 0.2 .00 ± 0.15 .000 ± 0.075		DFTO SYANG DATE 3/31/98 CHKD SAMMY DATE 2004/11/18 MFO DATE APPV LUSHENG DATE 2004/11/18	FULL RISE ELECTRONIC CO., LTD	
DEFORMED LEFT ANGLES ± 0.5 THIRD ANGLE PROJECTION		MATERIAL : QTY : FINISH : SCALE : 4:1	TITLE RJ11 TOP ENTRY PCB MOLDING JACK (DIP TYPE) DRAWING NO. GE523043 /PART NO. SEE NOTE DO NOT SCALE DRAWING	
			SIZE A3 SHEET OF	REV 3

8 | 7 | 6 | 5 | 4 | 3 | 2 | 1

H
G
F
E
D
C
B
A