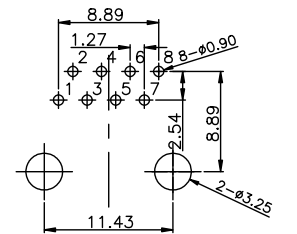
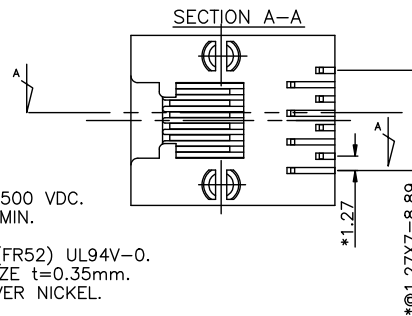
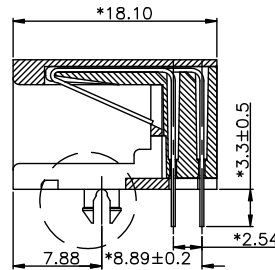
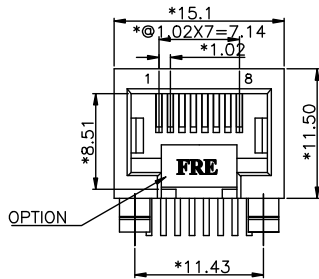


A1RFRD10

REVISION RECORD				
REV	ECO	DESCRIPTION	DRFT	CHKD
1		ADD P/N.	07/15/05	



PCB T=1.60mm
PC BOARD LAYOUT COMPONENT SIDE SHOWN

NOTES:

ELECTRICAL:

1. VOLTAGE RATING : 125 VAC RMS.
2. CURRENT RATING : 1.5 AMP.
3. CONTACT RESISTANCE : 35 MILLIOHMS MAX.
4. INSULATION RESISTANCE: 1000 MEGOHMS MIN @ 500 VDC.
5. DIELECTRIC STRENGTH : 1000 VAC RMS 60Hz, 1MIN.

MECHANICAL:

1. HOUSING MATERIAL : NYLON+30%G.F. (FR52) UL94V-0.
2. CONTACT MATERIAL : PHOSPHOR BRONZE t=0.35mm.
3. PLATING : GOLD PLATING OVER NICKEL.
4. OPERATING LIFE : 750 CYCLES MIN.
5. PCB RETENTION PRE-SOLDER : 1 LB MIN.
6. PCB RETENTION POST-SOLDER: 10 LBS MIN.

ENVIRONMENTAL:

1. STORAGE : -40°C TO +85°C.
2. OPERATION: -40°C TO +85°C.
3. WAVE SOLDER TEMPERATURE: 255°C TO 265°C 5~10SECOND.

MATES WITH MODULAR PLUG CONFORMING TO
FCC PART 68, SUBPART F.

CUL FILE NO. E163191

PART NUMBER: E538X-E005XX-L

NO OF CONTACT:

- | | | |
|-------|------------|-----------------|
| 2- 2C | 1- 3u" | 2- 6u" |
| 4- 4C | 3- 15u" | 4- 30u" |
| 6- 6C | 5- 50u" | 6- Pd 20u" |
| 8- 8C | 1- W/O Key | 7- Deep W/O Key |

MM (INCH)	DFTD 30mm	DATE 06/16/05	FULL RISE ELECTRONIC CO., LTD
TOLERANCES EXCEPT AS NOTED	CHWD	DATE	
MM	APPL	XLF	DATE 07/16/05
.0 ±0.20			
.00 ±0.15			
.000 ±0.075			
ANGLES ±	QTY :		TITLE 11.5 SIDE ENTRY 8P FCC DEEP TYPE
THIRD ANGLE PROJECTION	FINISH :		DRAWING NO. GE533A01-LA
	SCALE :		/PART NO. SEE NOTE
			DO NOT SCALE DRAWING
			SHEET X OF Y
			SIZE A3
			REV 1

8 | | | 7 | | | 6 | | | 5 | | | 4 | | | 3 | | | 2 | | | 1

H
G
F
E
D
C
B
A