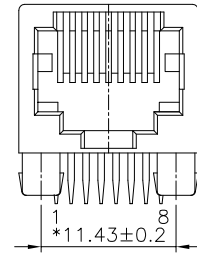
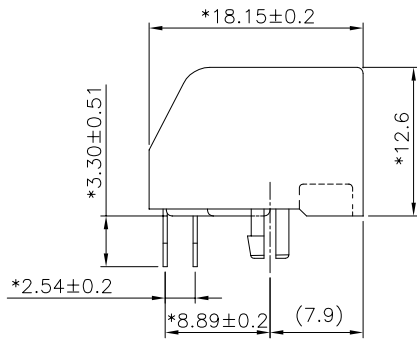
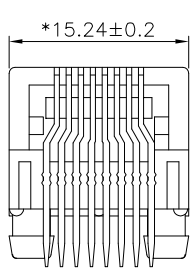
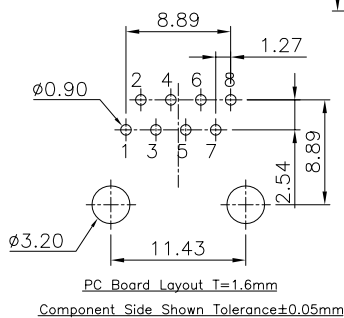
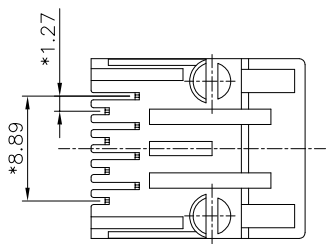


H  
G  
F  
E  
D  
C  
B  
A



**NOTES:**

- ELECTRICAL:**
- VOLTAGE RATING : 125 VAC RMS.
  - CURRENT RATING : 1.5 AMP.
  - CONTACT RESISTANCE : 35 MILLIOHMS MAX.
  - INSULATION RESISTANCE: 1000 MEGOHMS MIN @ 500 VDC.
  - DIELECTRIC STRENGTH : 1000 VAC RMS 60Hz, 1MIN.
- MECHANICAL:**
- HOUSING MATERIAL : GLASS FILLED PBT UL94V-0. COLOR:BLACK
  - CONTACT MATERIAL : PHOSPHOR BRONZE t=0.35mm.
  - PLATING : CONTACT AREA-SELECTIVE GOLD PLATING. TAILS-TIN 150u" MIN OVER NICKEL.
  - OPERATING LIFE : 750 CYCLES MIN.
  - PCB RETENTION PRE-SOLDER : 1 LB MIN.
  - PCB RETENTION POST-SOLDER: 10 LBS MIN.
- ENVIRONMENTAL:**
- STORAGE TEMPERATURE : -40°C TO +85°C.
  - OPERATION TEMPERATURE : -40°C TO +85°C.
  - WAVE SOLDERING TEMPERATURE: 230~250°C (5~10 SECONDS)
  - RoHS COMPLIANT.
- MATES WITH MODULAR PLUG CONFORMING TO FCC PART 68, SUBPART F.  
CUL FILE NO. E163191



PART NUMBER	GOLD PLATING
E6288-000221-L	3u"
E6288-000222-L	6u"
E6288-000224-L	30u"

		<b>RoHS Compliant</b>			
TOLERANCES EXCEPT AS NOTED					
DETACHED LISTS MM .0 ± 0.2 .00 ± 0.15 .000 ± 0.075 ANGLES ± 0.5	±	±	TITLE <b>AMP L/P SIDE ENTRY PCB JACK 8P</b>		
	±	±	DFTO Cathy DATE 2006/09/20	DRAWING NO. CE623053-LC /PART NO. SEE TABLE	SIZE A3
	±	±	THIRD ANGLE PROJECTION	SCALE : FREE	DO NOT SCALE DRAWING
				SHEET 1 OF 1	REV 0

8 | 7 | 6 | 5 | 4 | 3 | 2 | 1