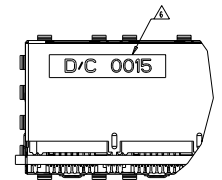
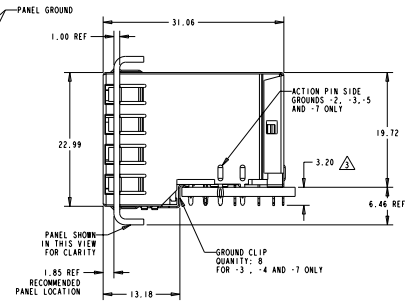
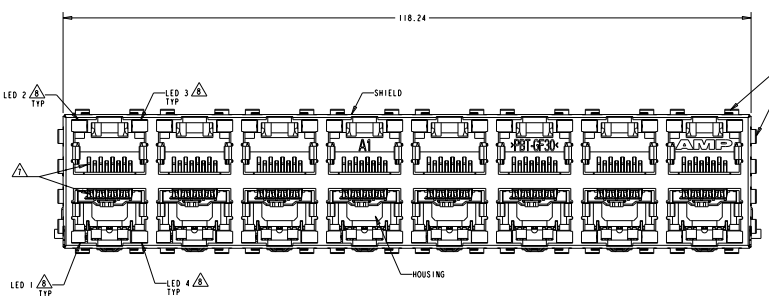
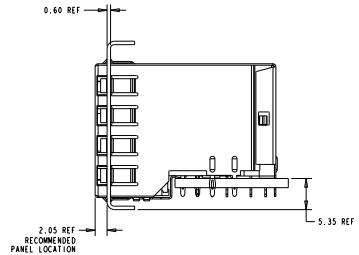


REV		REVISOR		REVISIONS	
NO	DATE	BY	DATE	DESCRIPTION	BY
AA	00				



ATCA PANEL AND PRINTED CIRCUIT BOARD ASSEMBLY LAYOUT



AMC PANEL AND PRINTED CIRCUIT BOARD ASSEMBLY LAYOUT

- MATERIAL:**
 HOUSING: PET POLYESTER, BLACK, UL 94V-0
 TERMINALS: 0.25 THICK PHOSPHOR BRONZE PLATED WITH 1.27µm MINIMUM THICK HARD GOLD IN LOCALIZED AREA AND 2.0µm MINIMUM THICK MATTE TIN IN COMPLIANT PIN TERMINAL AREA OVER 1.27µm MINIMUM THICK NICKEL UNDERPLATE
 SHIELD: 0.25 THICK COPPER ALLOY PLATED WITH 2.03µm MINIMUM TIN OVER 1.27µm MINIMUM NICKEL
 GROUND CLIP: 0.25 THICK COPPER ALLOY PRE-PLATED WITH 2.03µm MINIMUM MATTE TIN OVER 1.27µm MINIMUM NICKEL
 LIGHT EMITTING DIODE (LED): DIFFUSED EPOXY LENS, 12-95 CARBON STEEL WIREFRAME LEADS PREPLATED WITH 8.09µm THICK Sn/Cu OVER 2.03µm THICK Ag OVER 1.02µm THICK Cu OVER 3.56µm THICK Ni OVER 1.02µm THICK Cu UNDERPLATE
 LED COMPLIANT PIN CONTACTS: 0.3 THICK BRASS PLATED WITH 2.4µm BRIGHT TIN.
 - JACK CAVITY CONFORMS TO FCC RULES AND REGULATIONS, PART 68 SUBPART F.
- △ MAXIMUM PIN LENGTH 3.40 FROM TOP SURFACE OF PC BOARD
 - △ FINISHED PLATED THROUGH HOLE DIAMETER - ANNULAR RING DIAMETER 1.3 TO 1.5
 - △ DATUMS AND BASIC DIMENSIONS ESTABLISHED BY CUSTOMER
 - △ DATE CODE LOCATED ON REAR OF PART APPROXIMATELY AS SHOWN
 - △ CONTACTS ARE NOT INTENDED TO BE ALIGNED WITH EACH OTHER
 - △ SUGGESTED OPERATING CURRENT FOR LEDs IS 20ma
 - △ P/N:1888655-6 IS PRELIMINARY.

M D I M	LED #4 (LOWER-RIGHT)	LED #3 (UPPER-RIGHT)	LED #2 (UPPER-LEFT)	LED #1 (LOWER-LEFT)	SHIELD SIDE ACTION PIN	DESCRIPTION	PART NUMBER
15.88	GREEN/YELLOW	GREEN/YELLOW	GREEN/YELLOW	GREEN/YELLOW	YES	WITH GROUND CLIP	1888655-7
16.13	YELLOW	YELLOW	GREEN/YELLOW	GREEN/YELLOW	YES	WITHOUT GROUND CLIP	1888655-6
16.13	YELLOW	YELLOW	GREEN	GREEN	YES	WITHOUT GROUND CLIP	1888655-5
15.88	GREEN	GREEN	GREEN	GREEN	NO	WITH GROUND CLIP	1888655-4
15.88	GREEN	GREEN	GREEN	GREEN	YES	WITH GROUND CLIP	1888655-3 (SHOWN)
16.13	GREEN	GREEN	GREEN	GREEN	YES	WITHOUT GROUND CLIP	1888655-2
16.13	GREEN	GREEN	GREEN	GREEN	NO	WITHOUT GROUND CLIP	1888655-1

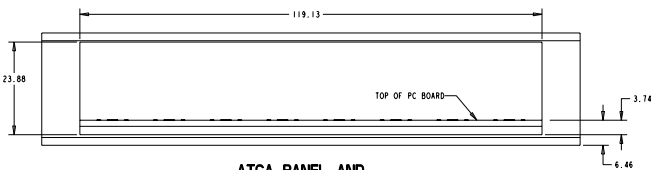
DATE: 10/12/2006	BY: J. WELSH	DATE: 10/12/2006	BY: J. WELSH
DATE: 10/12/2006	BY: J. WELSH	DATE: 10/12/2006	BY: J. WELSH
DATE: 10/12/2006	BY: J. WELSH	DATE: 10/12/2006	BY: J. WELSH
DATE: 10/12/2006	BY: J. WELSH	DATE: 10/12/2006	BY: J. WELSH

Stacked Modular Jack Assembly, 2 X 8, 8 POSN, SHIELDED, PANEL GROUND, OFFSET, CAT 5

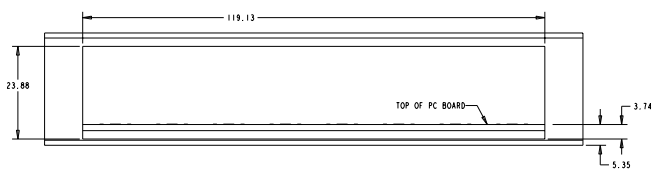
DATE CODE (DATE) TO: 00779 ©-1888655

CUSTOMER DRAWING

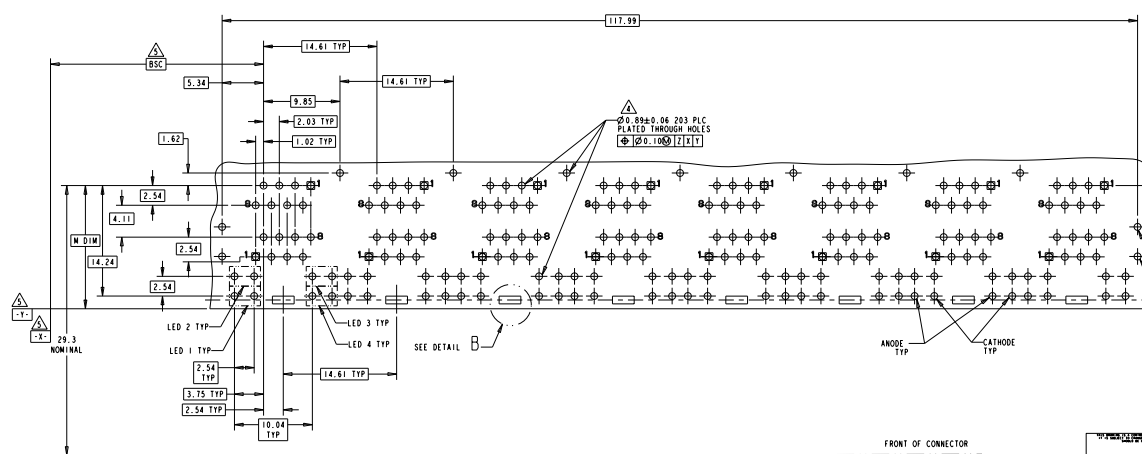
REV	DATE	DESCRIPTION	BY	CHK	APP
00	00	SEE SHEET 1			



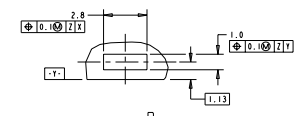
ATCA PANEL AND PRINTED CIRCUIT BOARD LAYOUT
 SCALE 2:1



AMC PANEL AND PRINTED CIRCUIT BOARD LAYOUT
 SCALE 2:1



PC BOARD LAYOUT (COMPONENT SIDE)



DETAIL B
 SCALE 8:1
 PLATED PADS FOR 188655-3, -4 AND -7 (PRODUCT WITH GROUNDING CLIP)
 8 PLC

THROUGH HOLES FOR SHIELD SLICE GROUNDS. NOT REQUIRED FOR 188655-1 & -4

DATE	210CT2004	REV	00
DESIGNED BY	RES/STN	DATE	210CT2004
DRWING NO.	188-1854	REV	00
PROJECT NO.	114-2160	DATE	210CT2004
BY	RES/STN	DATE	210CT2004
CHECKED BY	RES/STN	DATE	210CT2004
APPROVED BY	RES/STN	DATE	210CT2004
CUSTOMER DRAWING	188655	SHEET	2 OF 2

Stacked Modular Jack Assembly, 2 X 8, 8 POSN, SHIELDED, PANEL GROUND, OFFSET, CAT 5
 Tech Electronics Corporation
 Harrisburg, PA 17105-3600