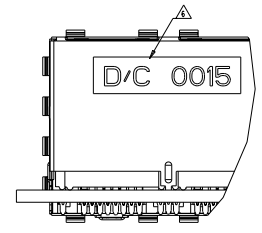
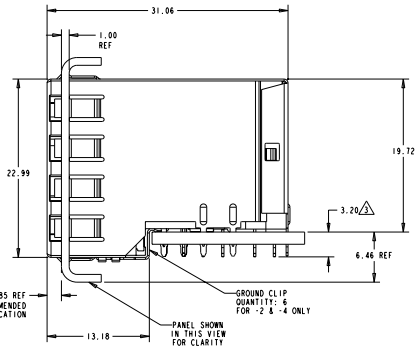
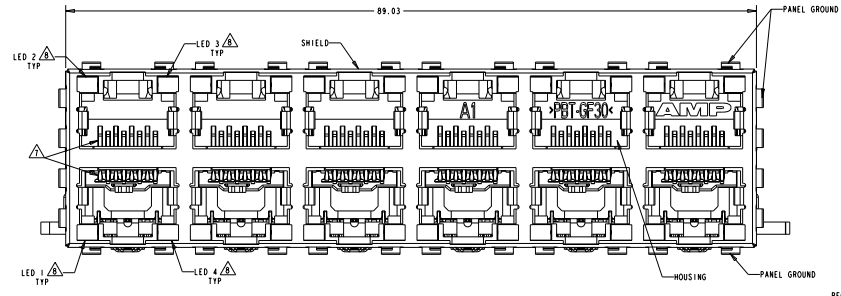
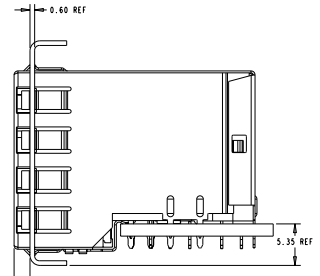


REV	DATE	DESCRIPTION	BY	CHK	APP
A	00	RELEASED	PLUMBING	RG	JW
B		REV PER ECO-07-001858	PLUMBING	RG	JW
S1		ADDED NEW DASH NUMBER	PLUMBING	DJ	ST
B2		ECR-08-020353	PLUMBING	AL	ST



ATCA PANEL AND PRINTED CIRCUIT BOARD ASSEMBLY LAYOUT



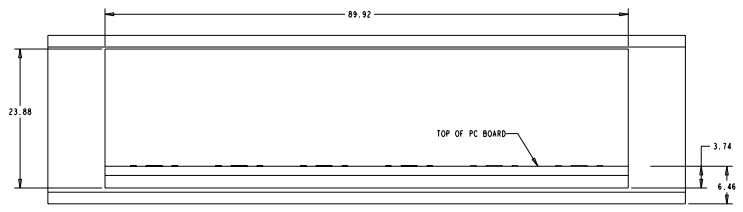
AMC PANEL AND PRINTED CIRCUIT BOARD ASSEMBLY LAYOUT

- MATERIAL:**
HOUSING: RPT POLYESTER, BLACK, UL 94V-0
TERMINALS: 0.33 THICK PHOSPHOR BRONZE PLATED WITH 1.27µm MINIMUM THICK HARD GOLD IN LOCALIZED AREA AND 2.0µm MINIMUM THICK MATE TIN IN COMPLIANT PIN TERMINAL AREA OVER 1.27µm MINIMUM THICK NICKEL UNDERPLATE
SHIELD: 0.25 THICK COPPER ALLOY PLATED WITH 2.03µm MINIMUM TIN OVER 1.27µm MINIMUM NICKEL
GROUND CLIP: 0.25 THICK COPPER ALLOY PRE-PLATED WITH 2.03µm MINIMUM MATE TIN OVER 1.27µm MINIMUM NICKEL
LIGHT EMITTING DIODE (LED): DIFFUSED EPOXY LENS, 12.95 CARBON STEEL WIREFRAME LEADS PREPLATED WITH 0.80µm THICK SH/Cu OVER 2.03µm THICK Ag OVER 1.82µm THICK Cu OVER 3.56µm THICK Ni OVER 1.52µm THICK Cu UNDERPLATE
LED COMPLIANT PIN CONTACTS: 0.3 THICK BRASS PLATED WITH 2.4µm BRIGHT TIN.
 - JACK CAVITY CONFORMS TO FCC RULES AND REGULATIONS, PART 68 SUBPART F.
- ▲ MAXIMUM PIN LENGTH 3.40 FROM TOP SURFACE OF PC BOARD
 - ▲ FINISHED PLATED THROUGH HOLE DIAMETER - ANNUAL RING DIAMETER 1.3 TO 1.5
 - ▲ DATUMS AND BASIC DIMENSIONS ESTABLISHED BY CUSTOMER
 - ▲ DATE CODE LOCATED ON REAR OF PART APPROXIMATELY AS SHOWN
 - ▲ CONTACTS ARE NOT INTENDED TO BE ALIGNED WITH EACH OTHER
 - ▲ SUGGESTED OPERATING CURRENT FOR LEDS IS 20mA
 - ▲ NO PANEL GROUNDS.

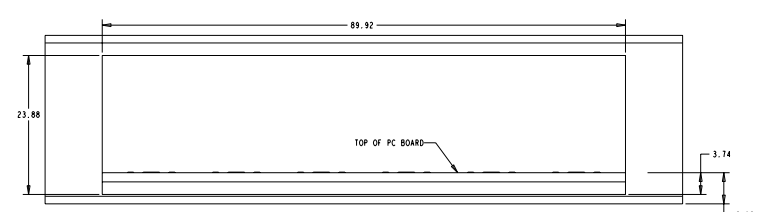
M DIM	LED #4 (LOWER-RIGHT)	LED #3 (UPPER-RIGHT)	LED #2 (UPPER-LEFT)	LED #1 (LOWER-LEFT)	DESCRIPTION	PART NUMBER
15.88	GREEN/YELLOW	GREEN/YELLOW	GREEN/YELLOW	GREEN/YELLOW	WITH GROUND CLIP	1888509-5
15.88	GREEN/YELLOW	GREEN/YELLOW	GREEN/YELLOW	GREEN/YELLOW	WITH GROUND CLIP	1888509-4
16.13	YELLOW	YELLOW	GREEN	GREEN	WITHOUT GROUND CLIP	1888509-3
15.88	GREEN	GREEN	GREEN	GREEN	WITH GROUND CLIP	1888509-2
16.13	GREEN	GREEN	GREEN	GREEN	WITHOUT GROUND CLIP	1888509-1

DATE: 08/24/2018	BY: TFC ELECTRONICS CORPORATION	ALL RIGHTS RESERVED	DATE: 08/24/2018	BY: TFC ELECTRONICS CORPORATION	ALL RIGHTS RESERVED
REV: 1	DATE: 08/24/2018	BY: TFC ELECTRONICS CORPORATION	REV: 1	DATE: 08/24/2018	BY: TFC ELECTRONICS CORPORATION
TFC ELECTRONICS CORPORATION 1000 W. MARKET STREET HARRISBURG, PA 17105-3600		TFC ELECTRONICS CORPORATION 1000 W. MARKET STREET HARRISBURG, PA 17105-3600			
CUSTOMER DRAWING		STACKED MOD JACK ASSEMBLY, 2 X 6, 8 POSN. W/LEDS, RJ45, SHIELDED, PANEL GROUND, OFFSET, CAT 5			
PART NUMBER: 188-1854 MANUFACTURER: TFC		PART NUMBER: 188-1854 MANUFACTURER: TFC			
DATE CODE: 00779		DATE CODE: 00779			

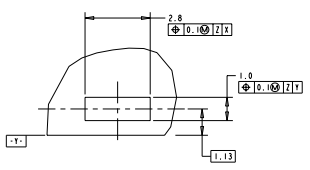
REV	DATE	DESCRIPTION	BY	CHK	APP
AA	00	SEE SHEET 1			



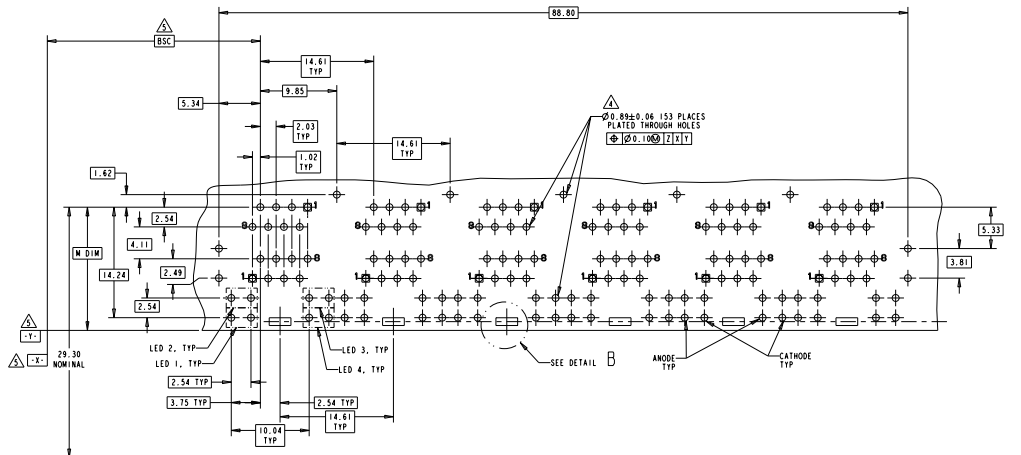
ATCA PANEL AND PRINTED CIRCUIT BOARD LAYOUT
SCALE 3:1



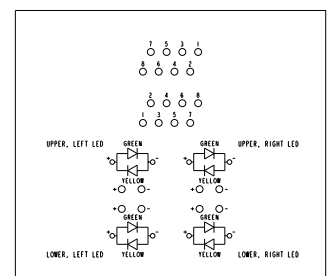
AMC PANEL AND PRINTED CIRCUIT BOARD LAYOUT
SCALE 3:1



DETAIL B
SCALE 12:1
PLATED PADS REQUIRED FOR 1888509-2 & -4 PRODUCT WITH GROUNDING CLIPS



PC BOARD LAYOUT (COMPLIANT SIDE)



BI-COLOR LED SCHEMATIC FOR 1888509-4, 5
SCALE 4:1

DATE: 08/24/2018	BY: TFC ELECTRONICS CORPORATION	REV: AA	DATE: 08/24/2018	BY: TFC ELECTRONICS CORPORATION
PROJECT: 1888509-4, 5	DESCRIPTION: STACKED MOD JACK ASSEMBLY, 2 X 6, 8 POSN, W/LEDS, RAAS, SHIELDED, PANEL GROUND, OFFSET, CAT 5	REV: AA	DATE: 08/24/2018	BY: TFC ELECTRONICS CORPORATION
REV: AA	DATE: 08/24/2018	DESCRIPTION: STACKED MOD JACK ASSEMBLY, 2 X 6, 8 POSN, W/LEDS, RAAS, SHIELDED, PANEL GROUND, OFFSET, CAT 5	BY: TFC ELECTRONICS CORPORATION	CHK: TFC
REV: AA	DATE: 08/24/2018	DESCRIPTION: STACKED MOD JACK ASSEMBLY, 2 X 6, 8 POSN, W/LEDS, RAAS, SHIELDED, PANEL GROUND, OFFSET, CAT 5	BY: TFC ELECTRONICS CORPORATION	APP: TFC