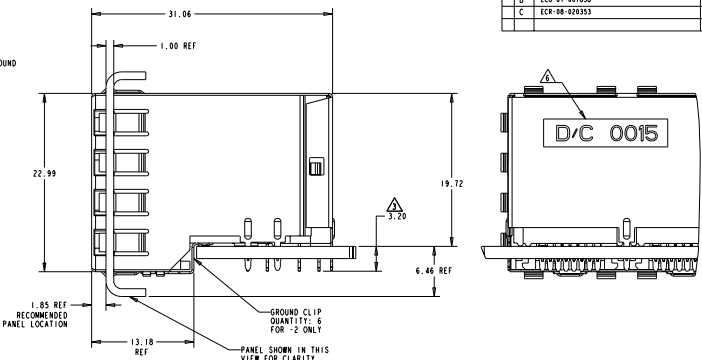
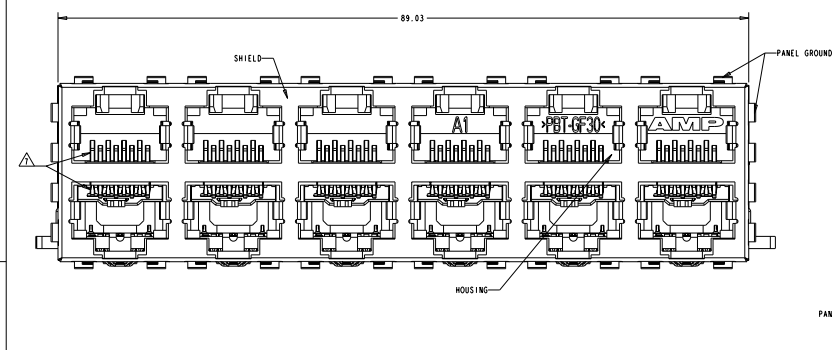
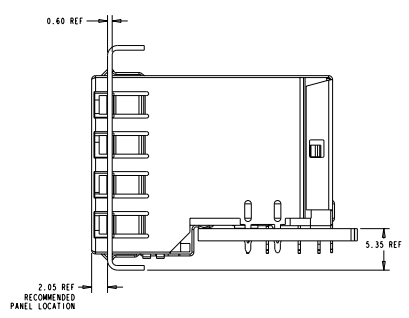


REV	DATE	DESCRIPTION	BY	CHKD	APP'D
A	RELEASED	2/20/2018	LAN	JW	
B	ECO-07-001858	2/20/2018	LAN	JW	
C	ECO-08-020353	2/20/2018	AL	ST	



ATCA PANEL AND PRINTED CIRCUIT BOARD ASSEMBLY LAYOUT



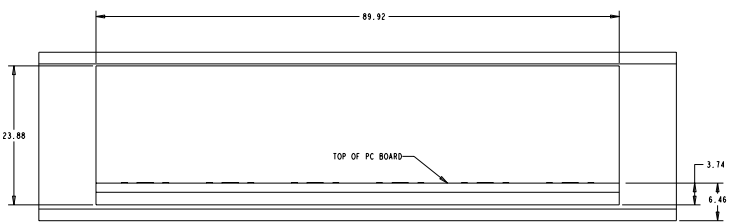
AMC PANEL AND PRINTED CIRCUIT BOARD ASSEMBLY LAYOUT

- MATERIAL:**
 HOUSING: PET POLYESTER, BLACK, UL 94V-0
 TERMINALS: 0.33 THICK PHOSPHOR BRONZE PLATED WITH 1.27µm MINIMUM THICK HARD GOLD IN LOCALIZED AREA AND 2.0µm MINIMUM THICK MATTE TIN IN COMPLIANT PIN TERMINAL AREA OVER 1.27µm MINIMUM THICK NICKEL UNDERPLATE
 SHIELD: 0.25 THICK COPPER ALLOY PLATED WITH 2.03µm MINIMUM TIN OVER 1.27µm MINIMUM NICKEL
 GROUND CLIP: 0.25 THICK COPPER ALLOY PRE-PLATED WITH 2.03µm MINIMUM MATTE TIN OVER 1.27µm MINIMUM NICKEL
 - JACK CAVITY CONFORMS TO FCC RULES AND REGULATIONS, PART 68 SUBPART F.
- ⚠ MAXIMUM PIN LENGTH 3.40 FROM TOP SURFACE OF PC BOARD
 - ⚠ FINISHED PLATED THROUGH HOLE DIAMETER - ANNULAR RING DIAMETER 1.3 TO 1.5
 - ⚠ DATUMS AND BASIC DIMENSIONS ESTABLISHED BY CUSTOMER
 - ⚠ DATE CODE LOCATED ON REAR OF PART APPROXIMATELY AS SHOWN
 - ⚠ CONTACTS ARE NOT INTENDED TO BE ALIGNED WITH EACH OTHER

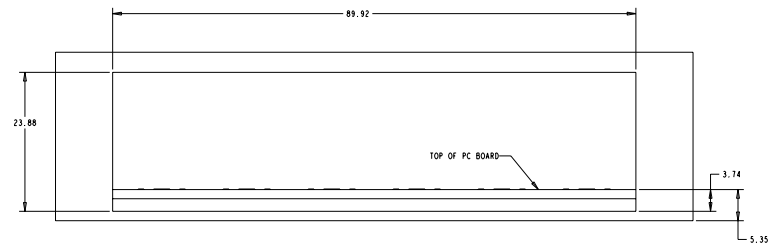
M. DIM	DESCRIPTION	PART NUMBER
15.88	WITH GROUND CLIP	1888508-2
16.13	WITHOUT GROUND CLIP	1888508-1

TTI ELECTRONICS CORPORATION 10000 WILLOW CREEK DRIVE HARRISBURG, PA 17105-3600 TEL: 717-560-8000 FAX: 717-560-8001 WWW.TTI.COM	DATE: 2/20/2018 TIME: 11:42:18 USER: jw PLOT: 1/1 SHEET: 1 OF 2	TTI ELECTRONICS CORPORATION 10000 WILLOW CREEK DRIVE HARRISBURG, PA 17105-3600 TEL: 717-560-8000 FAX: 717-560-8001 WWW.TTI.COM
---	---	---

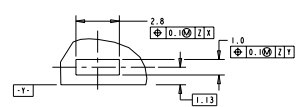
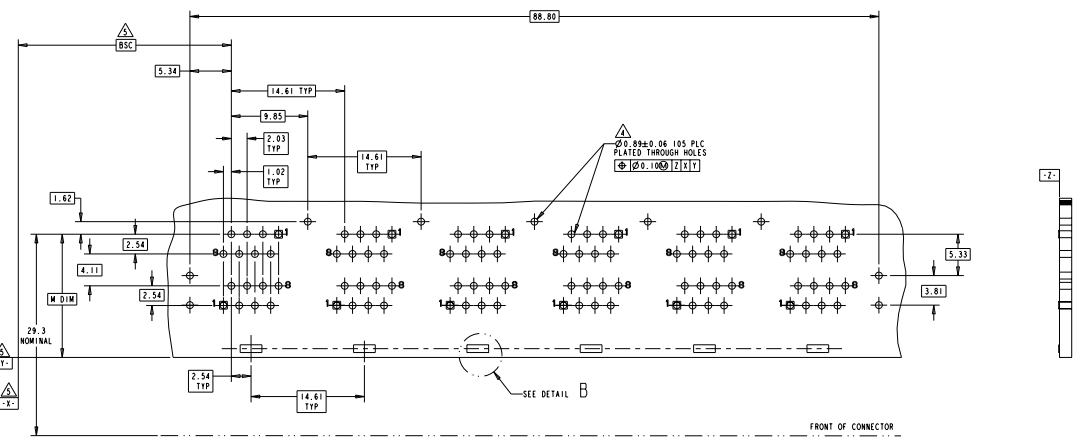
REV	DATE	DESCRIPTION	BY	CHK	APP
AA	00	SEE SHEET 1			



**ATCA PANEL AND
PRINTED CIRCUIT BOARD LAYOUT**
SCALE: 3:1



**AMC PANEL AND
PRINTED CIRCUIT BOARD LAYOUT**
SCALE: 3:1



REV	DATE	DESCRIPTION	BY	CHK	APP
AA	00	SEE SHEET 1			

DATE	04/24/2018	BY	PDC ELECTRONICS CORPORATION
REV	00	DATE	04/24/2018
REV	01	DATE	04/24/2018
REV	02	DATE	04/24/2018
REV	03	DATE	04/24/2018
REV	04	DATE	04/24/2018
REV	05	DATE	04/24/2018
REV	06	DATE	04/24/2018
REV	07	DATE	04/24/2018
REV	08	DATE	04/24/2018
REV	09	DATE	04/24/2018
REV	10	DATE	04/24/2018
REV	11	DATE	04/24/2018
REV	12	DATE	04/24/2018
REV	13	DATE	04/24/2018
REV	14	DATE	04/24/2018
REV	15	DATE	04/24/2018
REV	16	DATE	04/24/2018
REV	17	DATE	04/24/2018
REV	18	DATE	04/24/2018
REV	19	DATE	04/24/2018
REV	20	DATE	04/24/2018