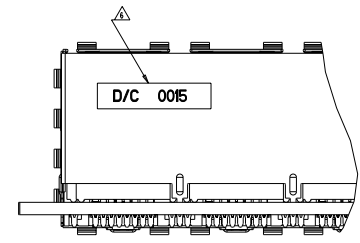
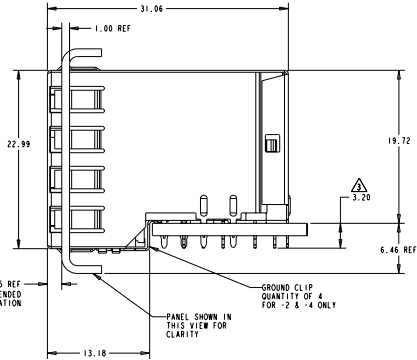
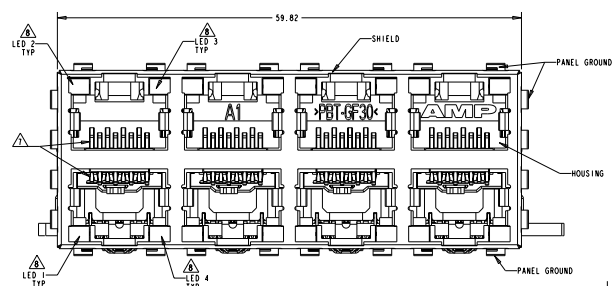
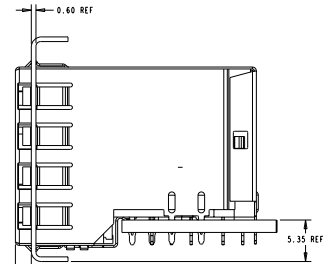


REV	DATE	DESCRIPTION	BY	CHK	APP
A	00	RELEASED	TFC/STW	LAN	JW
B3	ECR-10-010190		TFC/STW	KS	ST



**ATCA PANEL AND PRINTED CIRCUIT BOARD ASSEMBLY LAYOUT**



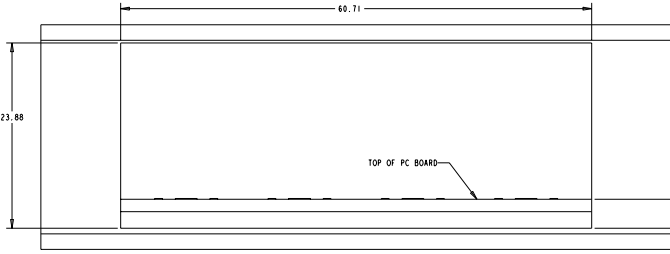
**AMC PANEL AND PRINTED CIRCUIT BOARD ASSEMBLY LAYOUT**

- MATERIAL:**  
HOUSING: PET POLYESTER, BLACK, UL 94V-0  
TERMINALS: 0.53 THICK PHOSPHOR BRONZE PLATED WITH 1.27µm MINIMUM THICK HARD GOLD IN LOCALIZED AREA AND 2.0µm MINIMUM THICK MATTE TIN IN COMPLIANT PIN TERMINAL AREA OVER 1.27µm MINIMUM THICK NICKEL UNDERPLATE  
SHIELD: 0.25 THICK COPPER ALLOY PLATED WITH 2.03µm MINIMUM TIN OVER 1.27µm MINIMUM NICKEL  
GROUND CLIP: 0.25 THICK COPPER ALLOY PRE-PLATED WITH 2.03µm MINIMUM MATTE TIN OVER 1.27µm MINIMUM NICKEL  
LIGHT EMITTING DIODE (LED): DIFFUSED EPONY LENS, 12.95 CARBON STEEL WIREFRAME LEADS 8.89µm THICK Sn/Cu OVER 2.03µm THICK Ag OVER 1.02µm THICK Cu OVER 3.56µm THICK Ni OVER 1.02µm THICK Cu UNDERPLATE  
LED COMPLIANT PIN CONTACTS: 0.3 THICK BRASS PLATED WITH 2.4µm BRIGHT TIN.
  - JACK CAVITY CONFORMS TO FCC RULES AND REGULATIONS, PART 68 SUBPART F.
- ⚠ MAXIMUM PIN LENGTH 3.40 FROM TOP SURFACE OF PC BOARD
  - ⚠ FINISHED PLATED THROUGH HOLE DIAMETER - ANNUAL RING DIAMETER 1.3 TO 1.5
  - ⚠ DATUMS AND BASIC DIMENSIONS ESTABLISHED BY CUSTOMER
  - ⚠ DATE CODE LOCATED ON REAR OF PART APPROXIMATELY AS SHOWN
  - ⚠ CONTACTS ARE NOT INTENDED TO BE ALIGNED WITH EACH OTHER
  - ⚠ SUGGESTED OPERATING CURRENT FOR LEDs IS 20mA
  - ⚠ NO PANEL GROUNDS

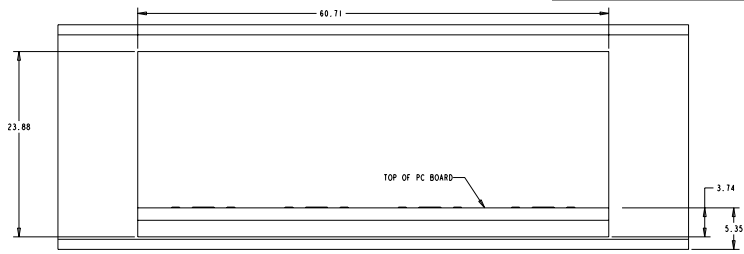
GREEN/YELLOW	GREEN/YELLOW	GREEN/YELLOW	GREEN/YELLOW	WITH GROUND CLIP	1888507-5
GREEN/YELLOW	GREEN/YELLOW	GREEN/YELLOW	GREEN/YELLOW	WITH GROUND CLIP	1888507-4
YELLOW	YELLOW	GREEN	GREEN	WITHOUT GROUND CLIP	1888507-3
GREEN	GREEN	GREEN	GREEN	WITH GROUND CLIP	1888507-2 (SHOWN)
GREEN	GREEN	GREEN	GREEN	WITHOUT GROUND CLIP	1888507-1
LED #4 (LOWER-RIGHT)	LED #3 (UPPER-RIGHT)	LED #2 (UPPER-LEFT)	LED #1 (LOWER-LEFT)	DESCRIPTION	PART NUMBER

DATE: 03/12/2018	BY: TFC/STW	CHK: LAN	APP: JW
REV: 00	DESCRIPTION: STACKED MODULAR JACK ASSEMBLY, 2x4 OFFSET WITH LEADS, 8 POSN, RJ45 SHIELDED PANEL GROUNDS, CAT 5	DATE CODE: 1808-1854	REV: 00
REV: 01	DESCRIPTION: CUSTOMER DRAWING	DATE CODE: 1808-1854	REV: 01
REV: 02	DESCRIPTION: CUSTOMER DRAWING	DATE CODE: 1808-1854	REV: 02
REV: 03	DESCRIPTION: CUSTOMER DRAWING	DATE CODE: 1808-1854	REV: 03
REV: 04	DESCRIPTION: CUSTOMER DRAWING	DATE CODE: 1808-1854	REV: 04
REV: 05	DESCRIPTION: CUSTOMER DRAWING	DATE CODE: 1808-1854	REV: 05
REV: 06	DESCRIPTION: CUSTOMER DRAWING	DATE CODE: 1808-1854	REV: 06
REV: 07	DESCRIPTION: CUSTOMER DRAWING	DATE CODE: 1808-1854	REV: 07
REV: 08	DESCRIPTION: CUSTOMER DRAWING	DATE CODE: 1808-1854	REV: 08
REV: 09	DESCRIPTION: CUSTOMER DRAWING	DATE CODE: 1808-1854	REV: 09
REV: 10	DESCRIPTION: CUSTOMER DRAWING	DATE CODE: 1808-1854	REV: 10
REV: 11	DESCRIPTION: CUSTOMER DRAWING	DATE CODE: 1808-1854	REV: 11
REV: 12	DESCRIPTION: CUSTOMER DRAWING	DATE CODE: 1808-1854	REV: 12
REV: 13	DESCRIPTION: CUSTOMER DRAWING	DATE CODE: 1808-1854	REV: 13
REV: 14	DESCRIPTION: CUSTOMER DRAWING	DATE CODE: 1808-1854	REV: 14
REV: 15	DESCRIPTION: CUSTOMER DRAWING	DATE CODE: 1808-1854	REV: 15
REV: 16	DESCRIPTION: CUSTOMER DRAWING	DATE CODE: 1808-1854	REV: 16
REV: 17	DESCRIPTION: CUSTOMER DRAWING	DATE CODE: 1808-1854	REV: 17
REV: 18	DESCRIPTION: CUSTOMER DRAWING	DATE CODE: 1808-1854	REV: 18
REV: 19	DESCRIPTION: CUSTOMER DRAWING	DATE CODE: 1808-1854	REV: 19
REV: 20	DESCRIPTION: CUSTOMER DRAWING	DATE CODE: 1808-1854	REV: 20

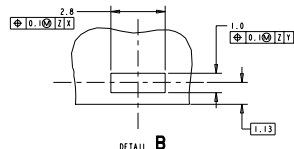
REV	DATE	DESCRIPTION	BY	CHK
AA	00	SEE SHEET 1		



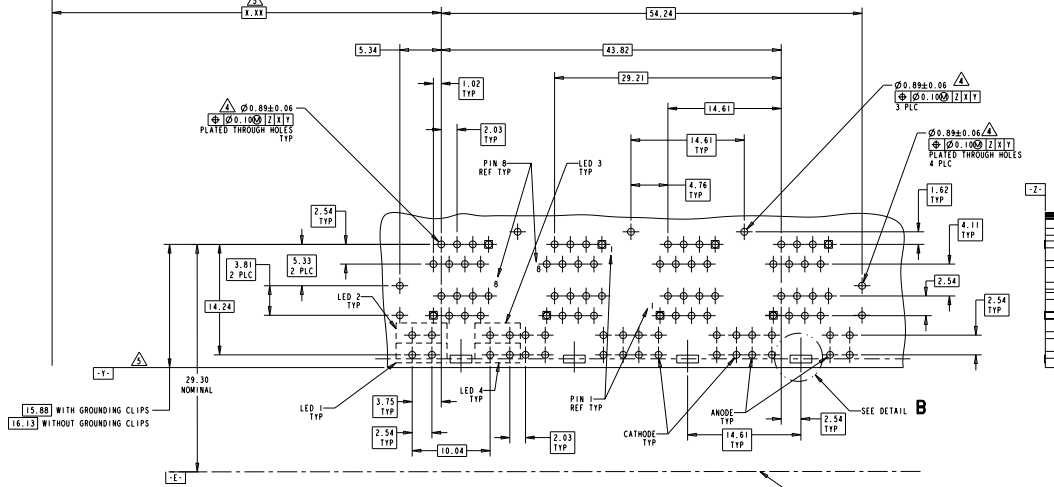
ATCA PANEL AND PRINTED CIRCUIT BOARD LAYOUT



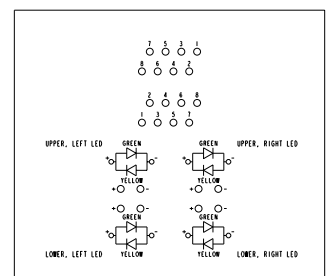
AMC PANEL AND PRINTED CIRCUIT BOARD LAYOUT



DETAIL B  
PLATED PADS REQUIRED FOR 1888507-2 & -4  
PRODUCT WITH GROUNDING CLIPS  
SCALE: 10:1  
4 PLACES



PC BOARD LAYOUT (COMPONENT SIDE)



BI-COLOR LED SCHEMATIC  
FOR 1888507-4, 5  
SCALE: 4:1

DATE: 08/24/2010	BY: TFC ELECTRONICS CORPORATION	REV: AA	DATE: 08/24/2010
DESCRIPTION: STACKED MODULAR JACK ASSEMBLY, 2x4 OFFSET WITH LEADS, 8 POSN, RJ45 SHIELDED PANEL GROUND, CAT 5	REV: AA	DATE: 08/24/2010	BY: TFC ELECTRONICS CORPORATION
REV: AA	DATE: 08/24/2010	BY: TFC ELECTRONICS CORPORATION	DATE: 08/24/2010
REV: AA	DATE: 08/24/2010	BY: TFC ELECTRONICS CORPORATION	DATE: 08/24/2010