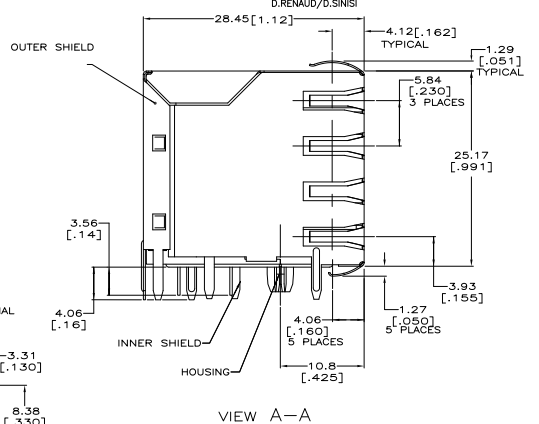
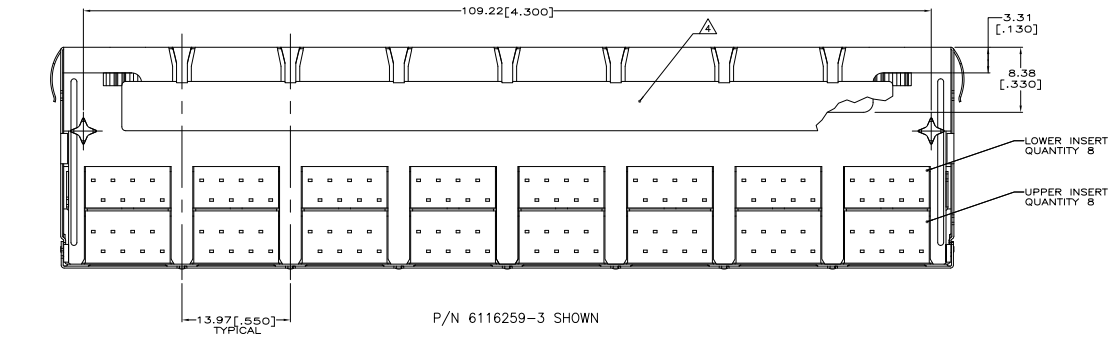
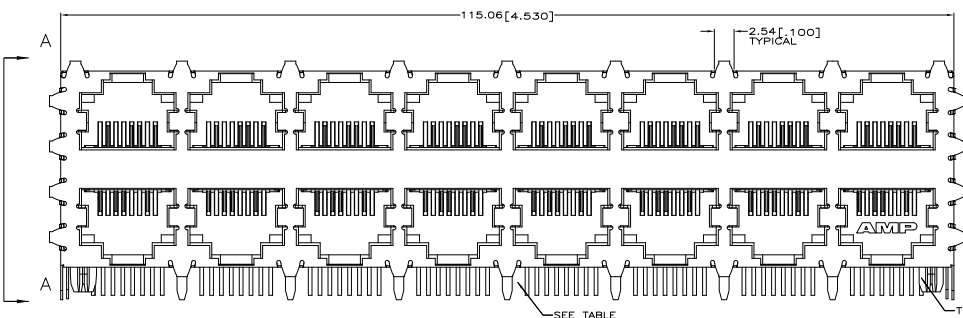
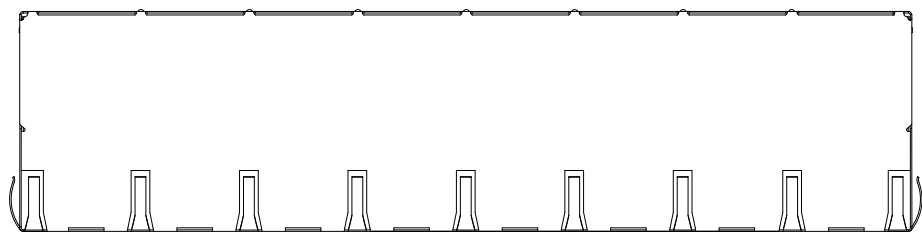


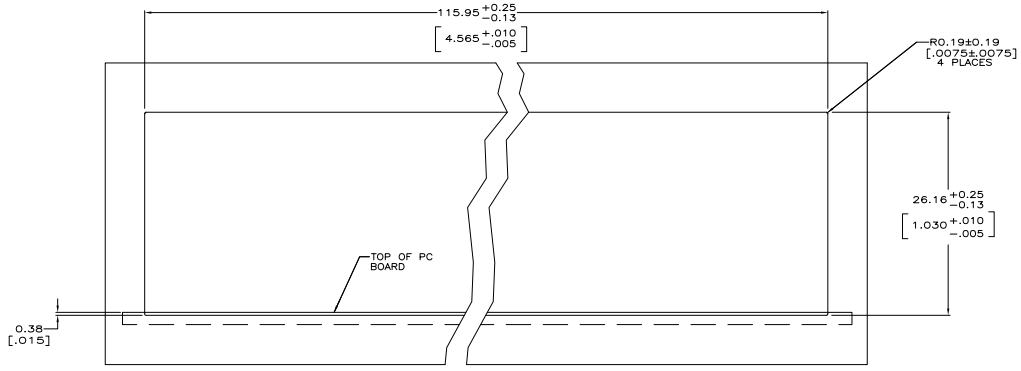
REV	DATE	DESCRIPTION	BY	CHKD
AA	22			
A3		ECR-11-006855		21MAY2011 JJ MQW



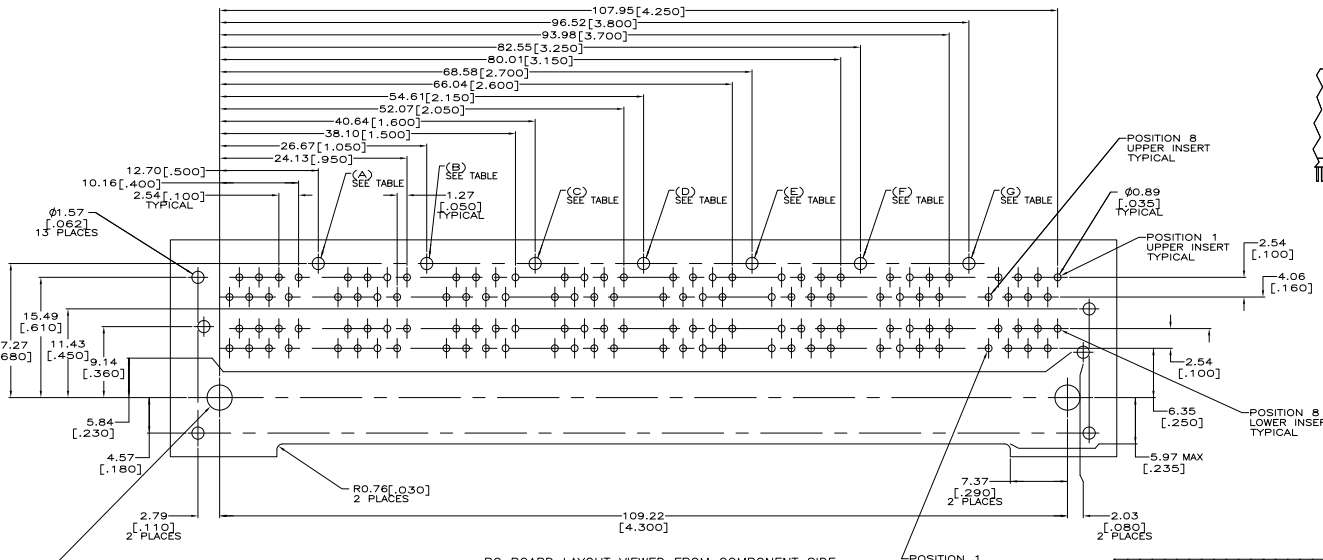
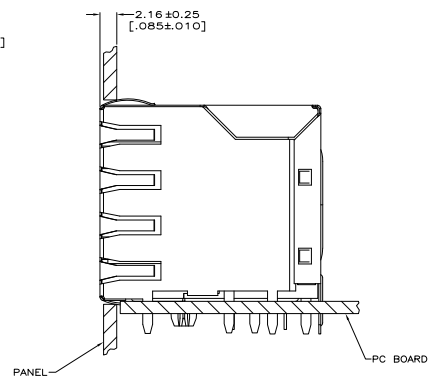
- ▲ MATERIAL-HOUSING - PCT POLYESTER, BLACK, UL 94V-0. OVERMOLDED TERMINAL ARRAY - PET, BROWN. TERMINALS - 0.33[0.13] THICK PHOS BRONZE PLATED WITH 1.27µm[0.00050] MIN THICK HARD GOLD IN LOCALIZED AREA AND 3.81µm[0.00150] MIN THICK MATTE TIN IN SOLDER AREA OVER 1.27µm[0.00050] MIN THICK NICKEL UNDERPLATE. SHIELD - 0.19[0.0077] THICK COPPER ALLOY PLATED WITH SATIN NICKEL 1.27µm[0.00050] MIN THICK OVERALL AND 2.03µm[0.00080] MIN THICK HOT TIN DIP ON PCB GROUND TABS. INSULATOR - 0.04[0.015] THICK WHITE POLYESTER FILM WITH PRESSURE SENSITIVE ADHESIVE, 6.35 X 99.31 [0.250 X 3.91].
- ▲ JACK CAVITY CONFORMS TO FCC RULES AND REGULATIONS, PART 68 SUBPART F.
- ▲ USE 3.25mm OR #30 DRILL BIT WHEN PRODUCING THESE PCB HOLES.
- ▲ INSULATOR TAPE, 1500 VAC DMC CAPABLE, APPLIED AS SHOWN FOR PN 6116259-3 ONLY.
- ▲ DATE CODE LOCATED ON REAR OF PART APPROXIMATELY AS SHOWN. FIRST 2 DIGITS ARE LAST 2 DIGITS OF YEAR. SECOND 2 DIGITS ARE MANUFACTURING WORK WEEK. LAST DIGIT IS DAY OF WEEK WITH SUNDAY = 1.
- ▲ OBSOLETE PARTS: OBSOLETE CIS STREAMLINING PER D.RENAUD/D.SIERS

OBSOLETE	A,B,C,D,E,F,G	7	6116259-3
	A,B,C,D,E,F,G <td>7 <td>6116259-2</td> </td>	7 <td>6116259-2</td>	6116259-2
	A,C,E,G <td>4 <td>6116259-1</td> </td>	4 <td>6116259-1</td>	6116259-1

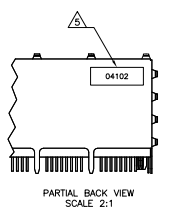
THIS DRAWING IS A CONTROLLED DOCUMENT.		HOLDING COMPANY		TITUS ELECTRONICS CORPORATION	
INCHES	MILLIMETERS	DATE	BY	CHKD	REV
1/16	1.5875	108-1163-2	J. WESTMAN	J. WESTMAN	1
1/8	3.1750	114-2048	R. FLEISCHER	R. FLEISCHER	2
3/16	4.7625				
1/4	6.3500				
5/16	7.9375				
3/8	9.5250				
7/16	11.1125				
1/2	12.7000				
5/8	15.8750				
3/4	19.0500				
7/8	22.2250				
1	25.4000				



SUGGESTED PANEL CUTOUT DIMENSIONS



PC BOARD LAYOUT VIEWED FROM COMPONENT SIDE



THIS DRAWING IS A CONTROLLED DOCUMENT.		DATE: 11/14/04 BY: J. JURELA / J. WESTMAN CHECKED BY: J. WESTMAN DRAWN BY: J. WESTMAN PART NO: 108-1163-2 REV: 1 114-2048 A100779 (G) 6116259	
DIMENSIONS: INCHES TOLERANCES: FRACTIONS DECIMALS ANGLES HOLE LOCATIONS SURFACE FINISH	FINISH: 108-1163-2 REV: 1 114-2048 A100779 (G) 6116259	TITLE: STACKED MODULAR JACK ASSEMBLY SUBTITLE: JACK POINT, 8 POSITION, SHIELDED CATEGORY: WAVE PANEL GROUND, CATEGORY 5 CUSTOMER DRAWING SHEET 2 OF 2 SIZE A3	DATE: 11/14/04 BY: J. JURELA / J. WESTMAN CHECKED BY: J. WESTMAN DRAWN BY: J. WESTMAN PART NO: 108-1163-2 REV: 1 114-2048 A100779 (G) 6116259