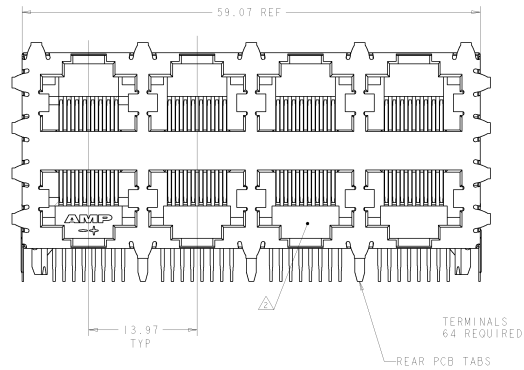
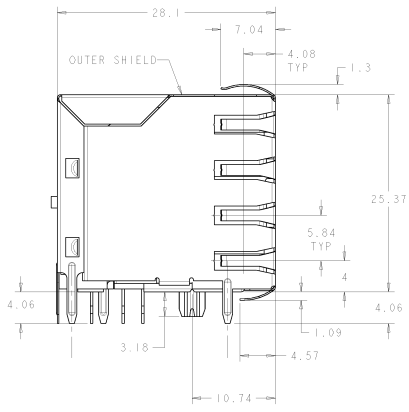
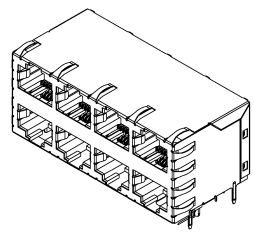
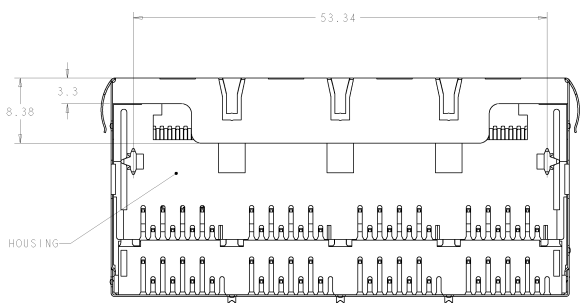


DATE: 01/15/2008	DESIGNED BY: J. B. BROWN
BY: J. B. BROWN	BY: J. B. BROWN

REV	DATE	DESCRIPTION	BY	CHKD	APP'D
AA	22				
A		REV PER EC 0511-0201-04			
B		REV PER EC 01-024583			



- △ HOUSING: PCT POLYESTER, BLACK, UL 94V-0.
- TERMINALS: 0.305 THICK PHOS BRONZE PLATED WITH 1.27µm MINIMUM THICK HARD GOLD IN LOCALIZED AREA AND 2.03µm MINIMUM THICK MATTE TIN IN SOLDER AREA OVER 1.27µm MINIMUM THICK NICKEL UNDERPLATE.
- SHIELD: 0.196 THICK COPPER ALLOY PLATED WITH 1.27µm MINIMUM NICKEL AND 2.03µm MINIMUM HOT TIN DTP ON PCB GROUND TABS.
- △ JACK CAVITY CONFORMS TO FCC RULES AND REGULATIONS, PART 68 SUBPART F
- △ PCB HOLES ONLY REQUIRED FOR 6339168-1
- △ USE #30 DRILL BIT OR 3.25mm DRILL BIT WHEN PRODUCING THESE PCB HOLES
- 5. RECOMMENDED APPLICATIONS: FAST ETHERNET, 10 BASE-T ETHERNET, AND 10/100 BASE-T ETHERNET (CAT 5 TWO PAIR 1/2, 3/6)



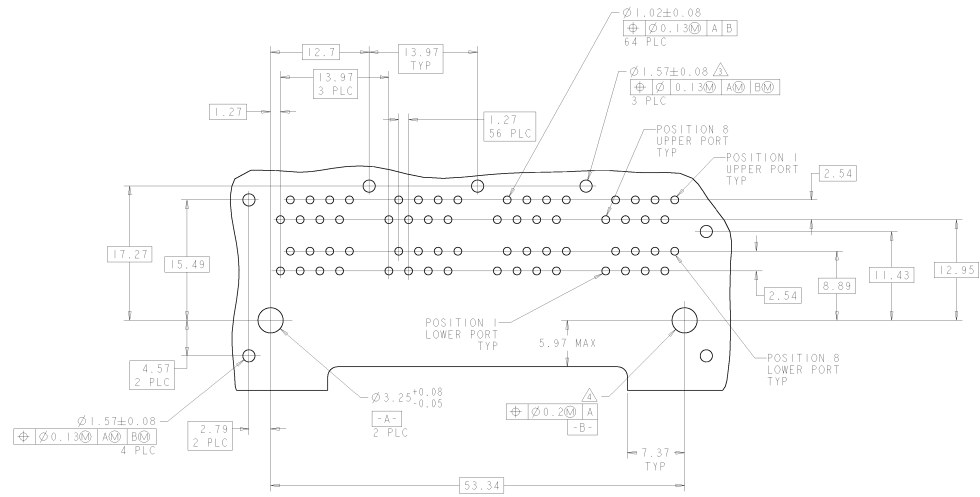
SCALE 2:1

NONE	6339168-2
3	6339168-1
REAR PCB TABS	PART NO.

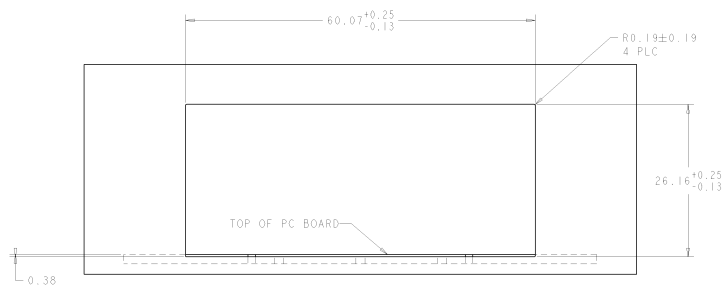
MFG: MELLER ELECTRONICS P/N: 6339168-1 QTY: 10000 DATE: 01/15/08 MATERIAL: PHOS		MFG: MELLER ELECTRONICS P/N: 6339168-1 QTY: 10000 DATE: 01/15/08 MATERIAL: PHOS		tyco Tyco Electronics Harrisburg, PA 17105-0008 ASSEMBLY STACKED JACK, 24, 8 POSITION, SHIELDED, WAVE PANEL GROUND A 100779 (2)-6339168 CUSTOMER DRAWING	
---	--	---	--	--	--

8	7	6	5	4	3	2	1
DATE: 01/15/2015	DESIGNED BY: J. B. BROWN						
BY: J. B. BROWN	IN: 14						

REV	DATE	DESCRIPTION	BY	CHK	APP
AA	22	SEE SHEET 1			



PC BOARD LAYOUT VIEWED FROM COMPONENT SIDE OF BOARD
SCALE 4:1



SUGGESTED PANEL CUTOUT DIMENSIONS
SCALE 3:1

DATE: 01/15/2015 DESIGNED BY: J. B. BROWN BY: J. B. BROWN IN: 14		DATE: 01/15/2015 DESIGNED BY: J. B. BROWN BY: J. B. BROWN IN: 14		TELECOM Tele Electronics Harrisburg, PA 17105-0001	
PART: 00779 REV: 02 QTY: 1000	PART: 00779 REV: 02 QTY: 1000	PART: 00779 REV: 02 QTY: 1000	PART: 00779 REV: 02 QTY: 1000	PART: 00779 REV: 02 QTY: 1000	PART: 00779 REV: 02 QTY: 1000
CUSTOMER DRAWING: 00779-02		CUSTOMER DRAWING: 00779-02		CUSTOMER DRAWING: 00779-02	