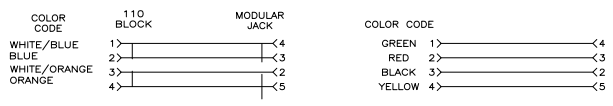


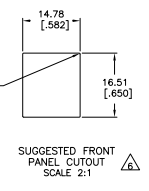
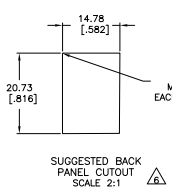
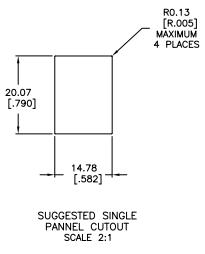
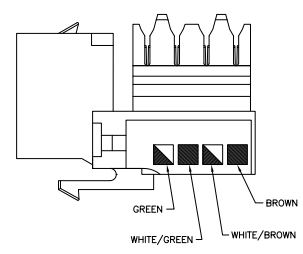
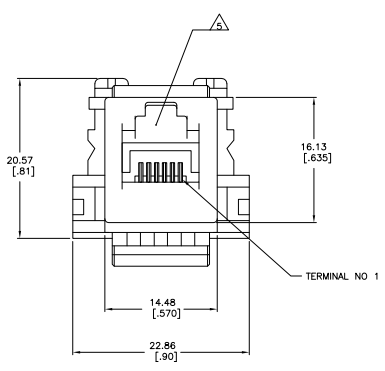
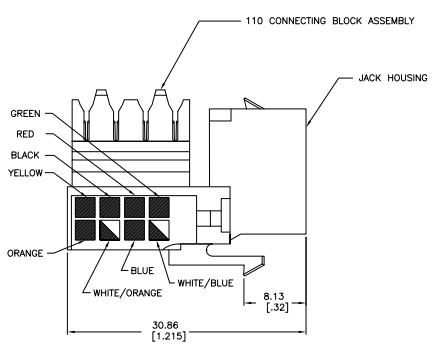
THIS DRAWING IS UNPUBLISHED  
 ALL RIGHTS RESERVED

REV	DATE	DESCRIPTION	BY	CHK	APP
00					
E1		REVISED PER EDD-11-005033	21MMR11	RC	HMR



ELECTRICAL SCHEMATIC (USOC)

- ⚠ MATERIAL: HOUSING - POLYPHENYLENE OXIDE, 94V-0 RATED. SEE TABLE FOR COLOR.  
 110 BLOCKS - POLYCARBONATE, 94V-0 RATED.  
 JACK CONTACTS - PHOSPHOROUS BRONZE, PLATED WITH 1.27µm [0.00050] MINIMUM THICK GOLD IN LOCALIZED AREA AND 3.81µm [0.00150] MINIMUM THICK MATTE TIN IN SOLDER AREA OVER 1.27µm [0.00050] MINIMUM THICK NICKEL UNDERPLATE.
- 2. 110 BLOCK WILL TERMINATE 22-26 AWG SOLID CONDUCTORS OR 20-26 AWG 7 STRAND CONDUCTORS, 1.27 [0.050] MAXIMUM INSULATION DIAMETER.
- 3. MOUNTING PANEL THICKNESS 1.473-1.600 [0.058-.063].
- ⚠ PACKAGED 25 MODULAR JACK ASSEMBLIES PER CARTON.
- ⚠ CAVITY CONFORMS TO FCC RULES AND REGULATIONS PART 68 SUBPART F REQUIREMENTS.
- ⚠ THESE TWO SUGGESTED CUTOUT OPENINGS ARE USED IN TANDEM WITH DUAL FRONT AND BACK CUTOUTS.



HOUSING COLOR	PART NUMBER
ELECTRIC IVORY	1-406375-1
VIOLET	1-406375-0
GREEN	406375-9
YELLOW	406375-B
RED	406375-7
BLUE	406375-6
ORANGE	406375-5
NEMA GRAY	406375-4
WHITE	406375-3
BLACK	406375-2
LIGHT ALMOND	406375-1

THIS DRAWING IS A CONTROLLED DOCUMENT. DATE: 10 FEB 93. BY: MCGONAGLE. CHECKED BY: BOYMAN. DATE: 10 FEB 97. PROJECT NO: 108-1389. WORK CENTER: 408-3389. SIZE: A1. DATE SIZE DRAWING NO: 100779. CUSTOMER: 406375. SHEET: 1 OF 1.