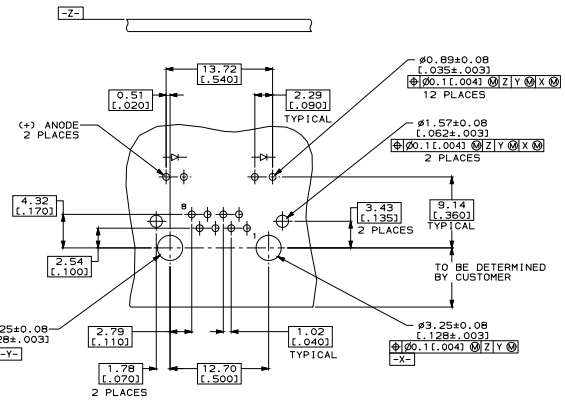
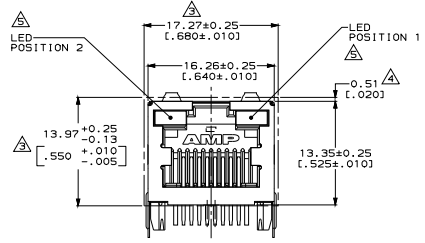
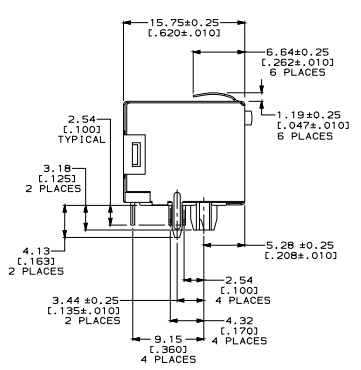


REV	DATE	DESCRIPTION	BY	CHK	APP
AA	22				
0		RELEASED PER EC 0511-0185-04			

- △ MATERIAL: HOUSING - HIGH TEMPERATURE NYLON, HEAT DEFLECTION TEMPERATURE RATING 278°C (532°F) AT 1.8MPa (264 PSI), BLACK, UL94V-0. TERMINALS - 0.36(.014) THICK PHOS BRONZE PLATED WITH 3.81µm(.000150) MINIMUM THICK TIN IN SOLDER AREA, 1.27µm (.000050) MINIMUM GOLD IN LOCALIZED PLATE AREA. ENTIRE TERMINAL PLATED WITH 1.27µm (.000050) MINIMUM THICK NICKEL. SHIELD - 0.196(.0077) THICK COPPER ZINC ALLOY PREPLATED WITH 1.27µm(.000050) MINIMUM SATIN NICKEL WITH 2.03µm(.000080) MINIMUM SnAgCu POST DIPPED ON POS GROUND TABS. LIGHT EMITTING DIODE (LED) - DIFFUSED EPOXY LENS, 0.51 x 0.51(.020 x .020) CARBON STEEL WIREFRAME LEADS PREPLATED WITH 2.29µm(.000090) SILVER OVER 1.02µm(.000040) NICKEL UNDERPLATE OVER 2.03µm(.000080) COPPER UNDERPLATE. POST-PLATED WITH 6.35µm (.000250) MINIMUM TIN. LEDS NOT DESIGNED FOR IR REFLOW SOLDERING.
- 2. JACK CAVITY CONFORMS TO FCC RULES AND REGULATIONS PART 6B, SUBPART F.
- △ SUGGESTED PANEL OPENING DIMENSIONS.
- △ SUGGESTED CLEARANCE BETWEEN TOP OF CONNECTOR AND TOP PANEL OPENING.
- △ SEE TABLE FOR COLOR OF LEDS AND NUMBER
- 6. TRAY PACKAGED.



SUGGESTED PRINTED CIRCUIT BOARD LAYOUT  
 (COMPONENT SIDE)

INDICATOR COLOR	PART NUMBER
GREEN	6116615-5
GREEN	6116615-4
YELLOW	6116615-4
POSITION 2	POSITION 1

THIS DRAWING IS A CONTROLLED DOCUMENT.		REV	DATE	BY	CHK	APP
REV	DATE	BY	CHK	APP		
108-1163-4	114-2154					
CUSTOMER DRAWING		REV	DATE	BY	CHK	APP
AA	22					

AMP Incorporated  
 Harrisburg, PA 17105-3608  
 INVERTED MODULAR JACK ASSEMBLY,  
 1X1, SHIELDED, TOP PANEL GROUNDS,  
 LEDS, TIN PLATED SOLDER TAILS