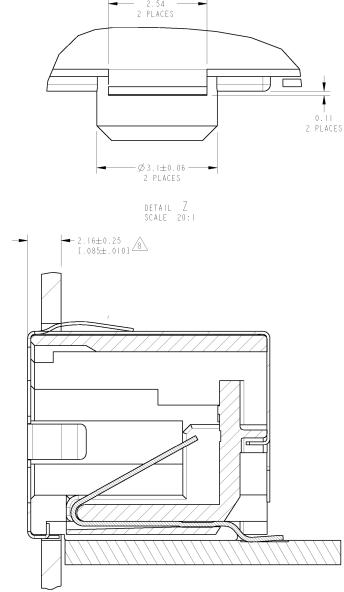
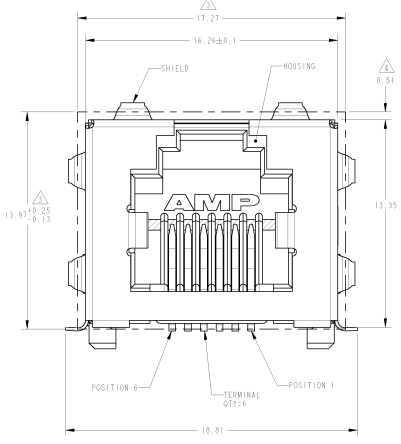
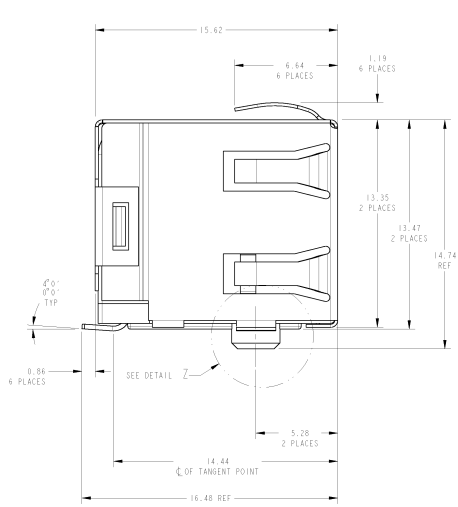
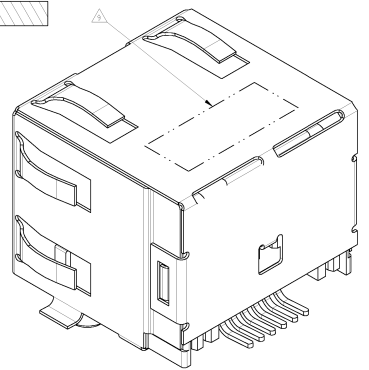
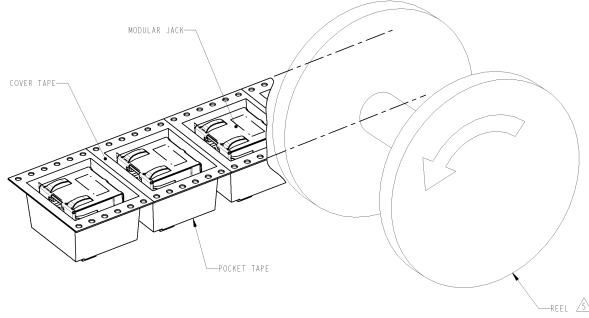
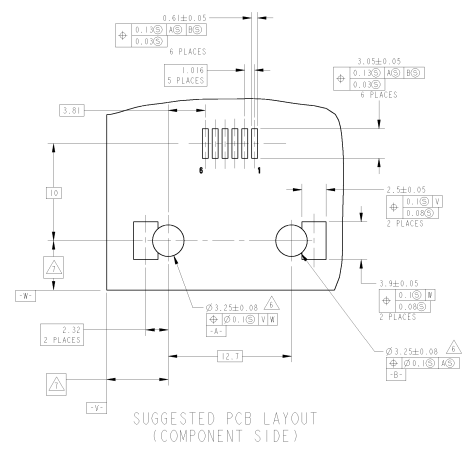


8	7	6	5	4	3	2	1
DATE STARTED TO MANUFACTURE	REVISED FOR MANUFACTURE						
03/03/2016	BY TOSH ELECTRONICS CORPORATION, ALL RIGHTS RESERVED						

REV	DATE	DESCRIPTION	BY	CHK	APP
AA	00				
B	02/01/2016				



- △ MATERIAL: HOUSING - HIGH TEMPERATURE THERMOPLASTIC, BLACK, 0.40±0. TERMINALS - 0.30 THICK PHOS. BRONZE PLATED WITH 2.03µm MINIMUM THICK MATTE TIN IN SOLDER AREA, 1.23µm GOLD IN LOCALIZED PLATE AREA, ENTIRE TERMINAL PLATED WITH 1.23µm THICK NICKEL. SHIELD - 0.196 THICK BRASS PREPLATED WITH 2.03µm±0.01µm THICK MATTE TIN OVER 0.16µm±2.03µm NICKEL UNDERPLATE.
- 2. JACK CAVITY CONFORMS TO FCC RULES AND REGULATIONS PART 68, SUBPART F.
- △ SUGGESTED PANEL OPENING DIMENSIONS: SEE APPLICATION SPEC. 114-2154 FOR PANEL THICKNESS AND POSITION RECOMMENDATIONS.
- △ SUGGESTED CLEARANCE BETWEEN TOP OF CONNECTOR AND TOP PANEL OPENING.
- △ PACKAGED: POCKET TAPE & REEL (PER EIA 481 SPECIFICATIONS) POCKET TAPE WIDTH - 4mm POCKET PITCH - 24mm POCKET DEPTH - 16.7mm CLEAR COVER TAPE - PSA CLEAR COVER TAPE TRAILER - 1220mm, WRAPPED ON REEL HUB PLASTIC REEL - 38mm DIAMETER PRODUCT QUANTITY - 200 PIECES PER REEL
- △ ZERO INSERTION FORCE POST WITH RECOMMENDED PCB LAYOUT.
- △ DATUM ESTABLISHED BY CUSTOMER.
- △ CONNECTOR SHOULD BE POSITIONED THRU PANEL CUTOOUT AS SHOWN TO SUPPORT TOP OF MODULAR JACK FOR STRAIN RELIEF.
- △ MANUFACTURING DATE CODE LOCATED APPROXIMATELY AS SHOWN. FIRST 2 DIGITS ARE YEAR, SECOND 2 DIGITS ARE WORK WEEK, LAST DIGIT IS THE DAY OF THE WEEK.



CONTACTS		PART NUMBER	
		6339212-1	
MATERIAL		REF NOTE 1	
PROCESS		REF NOTE 1	
FINISH		REF NOTE 1	
DRAWING		REF NOTE 1	
DATE		REF NOTE 1	
BY		REF NOTE 1	
CHKD		REF NOTE 1	
APP'D		REF NOTE 1	
CUST. DRAWING		REF NOTE 1	
PART NUMBER		REF NOTE 1	
DATE		REF NOTE 1	
BY		REF NOTE 1	
CHKD		REF NOTE 1	
APP'D		REF NOTE 1	
CUST. DRAWING		REF NOTE 1	

PLATE REVERSE DRAWING