

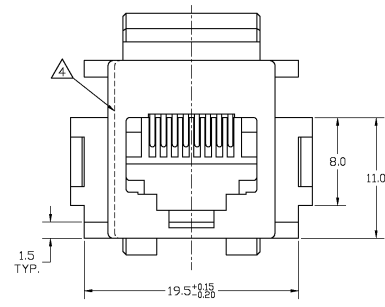
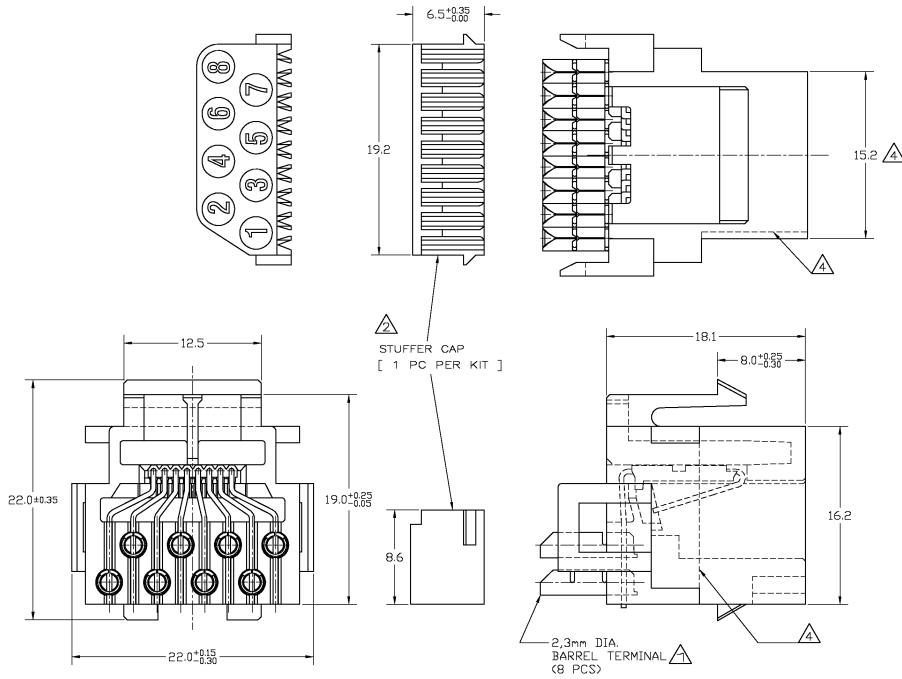
DO NOT SCALE
DIMENSIONS IN mm

METRIC



NOTES:

- ⚠️ BARREL TERMINALS WILL ACCEPT ONE OR TWO WIRES OF THE SAME SIZE PER TERMINAL.
WIRE SIZE FOR SOLID AND STRANDED WIRES:
0,12 mm² (26 AWG)-0,35 mm² (22 AWG).
MAXIMUM INSULATION DIA. 1,2 mm.
- ⚠️ STUFFER CAP IS SHIPPED NOT ASSEMBLED.
- ⚠️ MATERIALS: STUFFER CAP - A.B.S. UL 94HB
BARREL TERMINALS - PHOS.BRONZE, PRE-TINPLATED.
CONTACTS - PHOS.BRONZE, PLATED 1,25μm
SELECTIVE GOLD OVER 1,25μm NICKEL.
HOUSING - PBT, UL 94HB
- ⚠️ FOR 216005-4 DIMENSION 15,2 IS 14,6 .
CORRESPONDING WITH THE MARKED DASH LINES

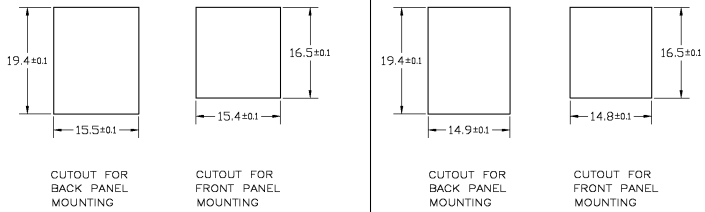


SUGGESTED PANEL CUTOUT DIMENSIONS

SCALE 2 : 1

X-216005-1

X-216005-4 AND X-216005-5



PANEL THICKNESS: 1,6 mm NOMINAL

TOLERANCE: ±0,15 UNLESS SPECIFIED OTHERWISE

500 PCS. IN A BOX		SEE NOTE ⚠️	HOUSING COLOR: BLACK SEE NOTE ⚠️	216005-4 216005-1
PACKAGING		FINISH		MATERIAL
P		KV		KV
N		J.T.		J.T.
M		J.T.		J.T.
L		D.K.		J.T.
K		J.K.L.		J.T.
J		J.W.		J.W.
LTR		REVISION RECORD		DR. CHK. DATE
DR.: J.V.L.E.W.P.T.		CHK.: W.B.R.U.M.M.A.N.G.		APP.: L. S.O.E.S.T.
DATE: 21 JAN 91		DATE: 12 OCT 90		DATE: 12 OCT 90
CUSTOMER DRAWING		FOR REFERENCE ONLY WILL NOT BE UPDATED		PARTNUMBER
P		KV		KV
N		J.T.		J.T.
M		J.T.		J.T.
L		D.K.		J.T.
K		J.K.L.		J.T.
J		J.W.		J.W.
LTR		REVISION RECORD		DR. CHK. DATE
DR.: J.V.L.E.W.P.T.		CHK.: W.B.R.U.M.M.A.N.G.		APP.: L. S.O.E.S.T.
DATE: 21 JAN 91		DATE: 12 OCT 90		DATE: 12 OCT 90
TOLLESS MODULAR JACK KIT		8 POS. FOR DISCRETE WIRES		DWG.No.
C-216005		REV.LTR.		SHEET
P		1		1 of 1
A2				