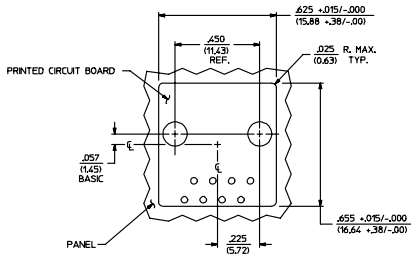
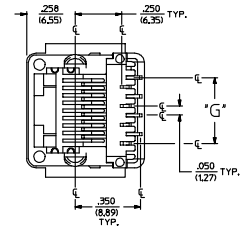
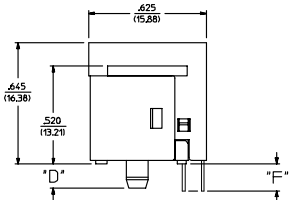
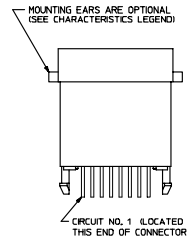
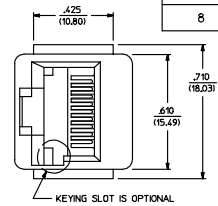


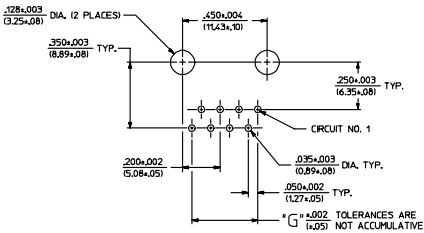
- NOTES:
- 1) MATERIALS: HOUSING PARTS ARE MADE OF POLYESTER, RATED UL, 94 V-0. COLOR IS BLACK; TERMINALS ARE .015(0.38) THICK PHOSPHOR BRONZE.
  - 2) TERMINAL PLATING OPTIONS PER ES-88-444:
    - A - SELECT GOLD IN CONTACT AREA: 50 MICRONS MIN.
    - \*SELECT TN IN PC TAIL AREA: 100 MICRONS MIN.
    - WITH OVERALL NICKEL UNDERPLATE: 50 MICRONS MIN.
    - \*THE PRIMARY SHIPPING CARTON WILL BE LABELED "COMPLIANT TO RoHS DIRECTIVE 2002/95/EC AND ELV ANNEX II OF DIRECTIVE 2000/53/EC", CARTONS WITHOUT THIS LABEL MAY CONTAIN PRODUCT WITH TN-LEAD IN THE PC TAIL.
  - 3) THESE MODULAR JACKS MEET THE PERFORMANCE REQUIREMENTS OF MOLEX PRODUCT SPECIFICATION PS-42410.
  - 4) CONNECTORS ARE TO BE PACKED IN THERMOFORMED TRAYS, PER PACKAGING SPECIFICATION PK-42410-492.
  - 5) ALL JACKS ARE DESIGNED TO BE USED WITH .062(1.57) OR .125(3.18) THICK P.C. BOARDS.
  - 6) ALL JACKS CONFORM TO AND ACCEPT PLUGS WHICH CONFORM TO FCC RULES AND REGULATIONS PART 68, SUBPART F, WHEN PLATED WITH 50 MICRONS GOLD.
  - 7) ALL JACKS MUST BE CAPABLE OF FITTING INTO MOLEX GAGE G-42410 (CONNECTOR SIZE 4L).
  - 8) SEE SHEETS 1 & 4 FOR CONNECTOR SIZE 4.
  - 9) SEE SHEETS 2 & 4 FOR CONNECTOR SIZE 6.
  - 10) SEE SHEET 4 FOR ASSEMBLY ITEM NUMBERS.
  - 11) THIS MODULAR JACK ASSEMBLY IS ALSO AVAILABLE IN A UL 94V-0 RATED, GLASS-FILLED NYLON. (SEE MOLEX DRAWING SDA-43576)
  - 12) ENGRAVED NUMBERS ON HOUSING BODY ARE FOR MOLDING IDENTIFICATION ONLY. THEY ARE NOT INTENDED FOR ASSEMBLY IDENTIFICATION PURPOSES.
  - 13) ALL UNTOLERANCED DIMENSIONS ARE SHOWN FOR REFERENCE ONLY.

P.C. BOARD THICKNESS	DIM. 'D' (MTG. PEGS)	DIM. 'F' (P.C. TAILS)
.062/(1.57)	.128 (3.25)	.200 ±.015/-.025 (3.05 ±.38/-63)
.125/(3.18)	.191 (4.85)	.205 ±.015/-.025 (5.21 ±.38/-63)

CONNECTOR SIZE	CIRCUIT SIZE	DIM. 'G'
8	8	.350 (8.89)
8	6	.250 (6.35)
8	4	.150 (3.81)
8	2	.050 (1.27)



PANEL CUT-OUT FOR CONNECTOR SIZE 8



P.C. BOARD LAYOUT FOR CONNECTOR SIZE 8

SIZE 8 MODULAR JACK LOADED WITH 8 TERMINALS SHOWN ABOVE

(SEE SHEET 4 FOR PART NUMBER AVAILABILITY)

SEE SHEET ONE EC NO. UEP2004-167 DRAWNSCHMIDT 2004/03/03 CHECKSCHMIDT 2004/03/03 APPROVED 2004/03/03 N	QUALITY SYMBOLS	GENERAL TOLERANCES (UNLESS SPECIFIED)	SCALE 4:1	DESIGN UNITS INCH	THIRD ANGLE PROJECTION	REVISE ON CAD ONLY
	▽.0	mm INCH	DIMENSION STYLE IN/MM	DATE 1990/10/12	ASSEMBLY, VERTICAL MODULAR JACKS (CONNECTOR SIZE 8)	
	▽.0	4 PLACES ±.000 ±.000	DRAWN BY DATE 1990/10/12	DATE 1990/10/12	MOLEX MOLEX INCORPORATED	
		3 PLACES ±.000 ±.000	CHECKED BY DATE 1990/10/12	DATE 1990/10/12	SEE SHEET 4 SDA-42410-***** 3 OF 4	
	2 PLACES ±.000 ±.000	APPROVED BY DATE 1990/10/12	DATE 1990/10/12	MATERIAL NO. DOCUMENT NO. SHEET NO.		
	1 PLACE ±.000 ±.000	ANGULAR ±1/2°	THIS DRAWING CONTAINS INFORMATION THAT IS PROPRIETARY TO MOLEX INCORPORATED AND SHOULD NOT BE USED WITHOUT WRITTEN PERMISSION			
DRAFT WHERE APPLICABLE		MUST REMAIN WITHIN DIMENSIONS				

SIZE 4 VERTICAL MODJACK ASSEMBLIES						SIZE 8 VERTICAL MODJACK ASSEMBLIES						
PART CHARACTERISTICS						PART CHARACTERISTICS						
ASSEMBLY ITEM NUMBER	EXTERNAL CONNECTOR SIZE	NUMBER OF POSITIONS	P.C. BOARD THICKNESS	MOUNTING EARS OPTION	TERMINAL PLATING OPTION	ASSEMBLY ITEM NUMBER	EXTERNAL CONNECTOR SIZE	NUMBER OF POSITIONS	P.C. BOARD THICKNESS	KEYING OPTION	MOUNTING EARS OPTION	TERMINAL PLATING OPTION
42410-4168	4 POS. BODY	4	.062/(1.57)	YES	A	42410-8312	8 POS. BODY	8	.062/(1.57)	NO	YES	A
42410-4170	↓	↓	.062/(1.57)	NO	A	42410-8314	↓	↓	.062/(1.57)	NO	NO	A
42410-4264	↓	↓	.125/(3.18)	YES	A	42410-8360	↓	↓	.062/(1.57)	YES	YES	A
42410-4266	4 POS. BODY	4	.125/(3.18)	NO	A	42410-8362	↓	↓	.062/(1.57)	YES	NO	A
42410-4312	4 POS. BODY	2	.062/(1.57)	YES	A	42410-8504	↓	↓	.125/(3.18)	NO	YES	A
42410-4314	↓	↓	.062/(1.57)	NO	A	42410-8506	↓	↓	.125/(3.18)	NO	NO	A
42410-4408	↓	↓	.125/(3.18)	YES	A	42410-8552	↓	↓	.125/(3.18)	YES	YES	A
42410-4440	4 POS. BODY	2	.125/(3.18)	NO	A	42410-8554	8 POS. BODY	8	.125/(3.18)	YES	NO	A
42410-6168	6 POS. BODY	6	.062/(1.57)	YES	A	42410-8600	8 POS. BODY	6	.062/(1.57)	NO	YES	A
42410-6170	↓	↓	.062/(1.57)	NO	A	42410-8602	↓	↓	.062/(1.57)	NO	NO	A
42410-6264	↓	↓	.125/(3.18)	YES	A	42410-8648	↓	↓	.062/(1.57)	YES	YES	A
42410-6266	6 POS. BODY	6	.125/(3.18)	NO	A	42410-8650	↓	↓	.062/(1.57)	YES	NO	A
42410-6312	6 POS. BODY	4	.062/(1.57)	YES	A	42410-8792	↓	↓	.125/(3.18)	NO	YES	A
42410-6314	↓	↓	.062/(1.57)	NO	A	42410-8794	↓	↓	.125/(3.18)	NO	NO	A
42410-6320	↓	↓	.062/(1.57)	YES	B	42410-8840	↓	↓	.125/(3.18)	YES	YES	A
42410-6408	↓	↓	.125/(3.18)	YES	A	42410-8842	8 POS. BODY	6	.125/(3.18)	YES	NO	A
42410-6440	6 POS. BODY	4	.125/(3.18)	NO	A	42410-8888	8 POS. BODY	4	.062/(1.57)	NO	YES	A
42410-6456	6 POS. BODY	2	.062/(1.57)	YES	A	42410-8890	↓	↓	.062/(1.57)	NO	NO	A
42410-6458	↓	↓	.062/(1.57)	NO	A	42410-8936	↓	↓	.062/(1.57)	YES	YES	A
42410-6552	↓	↓	.125/(3.18)	YES	A	42410-8938	↓	↓	.062/(1.57)	YES	NO	A
42410-6554	6 POS. BODY	2	.125/(3.18)	NO	A	42410-9080	↓	↓	.125/(3.18)	NO	YES	A
						42410-9082	↓	↓	.125/(3.18)	NO	NO	A
						42410-9128	↓	↓	.125/(3.18)	YES	YES	A
						42410-9130	8 POS. BODY	4	.125/(3.18)	YES	NO	A
						42410-9176	8 POS. BODY	2	.062/(1.57)	NO	YES	A
						42410-9178	↓	↓	.062/(1.57)	NO	NO	A
						42410-9224	↓	↓	.062/(1.57)	YES	YES	A
						42410-9226	↓	↓	.062/(1.57)	YES	NO	A
						42410-9368	↓	↓	.125/(3.18)	NO	YES	A
						42410-9370	↓	↓	.125/(3.18)	NO	NO	A
						42410-9416	↓	↓	.125/(3.18)	YES	YES	A
						42410-9418	8 POS. BODY	2	.125/(3.18)	YES	NO	A

SEE SHEET ONE EC NO. UEP2004-167 DRWING/SCHMIDT 2004/03/03 CHOKAL/SCHMIDT 2004/03/03 APPROVED DATE 2004/03/03 N	QUALITY SYMBOLS	GENERAL TOLERANCES (UNLESS SPECIFIED)	SCALE	DESIGN UNITS	THIRD ANGLE PROJECTION	REVISE ON CAD ONLY	
	$\nabla$ 0 $\nabla$ 0	4 PLACES ± --- ± --- 3 PLACES ± --- ± --- 2 PLACES ± --- ± --- 1 PLACE ± --- ± ---	DIMENSION STYLE IN/MM	INCH DATE 1990/10/12	DATE 1990/10/12	TITLE ASSEMBLY, VERTICAL MODULAR JACKS	
		ANGULAR ±1/2°	DRAWN BY GLT	CHECKED BY BAP	DATE 1990/10/12	MATERIAL NO. SEE CHART SDA-42410-*****	SHEET NO. 4 OF 4
		DRAFT WHERE APPLICABLE MUST REMAIN WITHIN DIMENSIONS	APPROVED BY RAS	DATE 1990/10/12	INCORPORATED AND SHOULD NOT BE USED WITHOUT WRITTEN PERMISSION	MOLEX INCORPORATED	