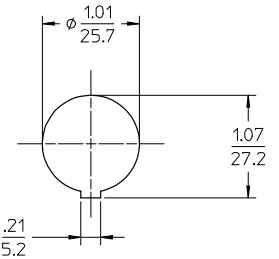
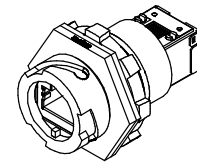
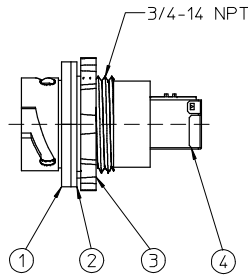
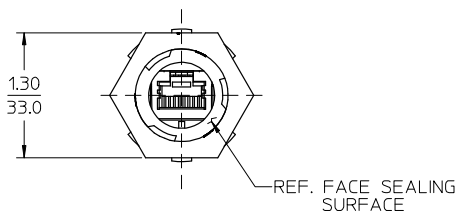
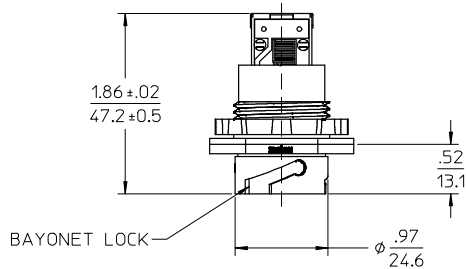


- Ⓒ NOTES:
 1. MATERIAL: SEE TABLE
 2. FINISHES: SEE TABLE
 3. PRODUCT SPECIFICATION: PPS.84.003
 4. PCB ASSEMBLY PUSHOUT : 20 LBS. MIN.
 5. COMPONENTS ARE RoHS COMPLIANT OR COMPLIANT BY EXCEPTION



Ⓒ REF. PANEL MOUNT THRU HOLE

ITEM	QTY.	DESCRIPTION	MATERIAL	FINISH
4	1	PCB, RJ-45, DUAL RECEPTACLE	PCB,MOD,JACK	
3	1	LOCK-NUT	STEEL	ZINC PLATED
2	1	PANEL GASKET	NEOPRENE	BLACK
1	1	RECEPTACLE HOUSING	PBT	BLACK

REVD & REDRAWN EC NO: ETC2007-0100 DRAWN BY: DRWNRSTONE 2006/10/02 CHECKED BY: JACQUEL 2006/10/02 APPR: JACQUEL 2006/10/02 REV DESCRIPTION	QUALITY SYMBOLS ▽=0 ▽=0	GENERAL TOLERANCES (UNLESS SPECIFIED) mm INCH 4 PLACES ± --- ± --- 3 PLACES ± --- ± --- 2 PLACES ± --- ± .01 1 PLACE ± 0.25 ± --- ANGULAR ± 1/2°	DIMENSION STYLE IN/MM DRAWN BY: R. STONE DATE: 2002/05/14 CHECKED BY: S. GILBERT DATE: 2002/11/11 APPROVED BY: P. WALTZ DATE: 2002/11/12	SCALE 1:1 DESIGN UNITS INCH THIRD ANGLE PROJECTION	TITLE RECEPTACLE, RJ-45 PCB, PANEL MOUNT INDUSTRIAL ETHERNET MOLEX INCORPORATED
	DRAFT WHERE APPLICABLE MUST REMAIN WITHIN DIMENSIONS	MATERIAL NO. 847000001 DOCUMENT NO. SD-84700-007 SHEET NO. 1 OF 1	THIS DRAWING CONTAINS INFORMATION THAT IS PROPRIETARY TO MOLEX INCORPORATED AND SHOULD NOT BE USED WITHOUT WRITTEN PERMISSION		