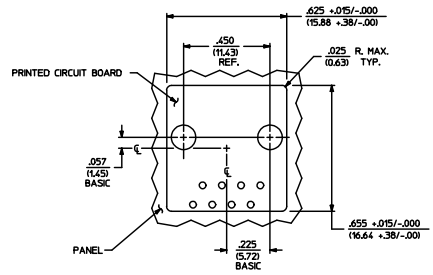


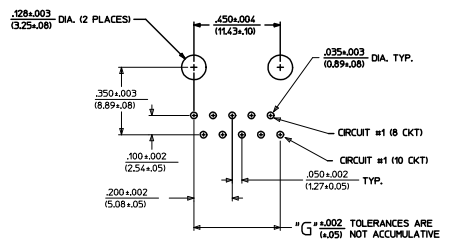
MODULAR JACK CHARACTERISTICS LEGEND									
EXTERNAL CONNECTOR BODY DIMENSIONS (SEE NOTES 8 AND 9) JACKS ARE AVAILABLE IN STANDARD 4, 6, AND 8 POSITION BODY SIZES									
NUMBER OF CONTACT POSITIONS: CONNECTOR SIZE 4 CAN ACCOMMODATE 2 OR 4 TERMINALS, CONNECTOR SIZE 6 CAN ACCOMMODATE 2, 4, OR 6 TERMINALS, CONNECTOR SIZE 8 CAN ACCOMMODATE 2, 4, 6, 8, OR 10 TERMINALS									
POLARIZATION OPTION: "NO" - JACKS WITHOUT KEYING SLOT "YES" - JACKS WITH KEYING SLOT (AVAILABLE ON CONNECTOR SIZE 8 ONLY)									
MOUNTING EARS OPTION: "YES" - JACKS WITH MOUNTING EARS "NO" - JACKS WITHOUT MOUNTING EARS									

- NOTES:
- 1) MATERIALS: HOUSING- POLYESTER, GLASS FILLED, UL94V-0, COLOR - BLACK
TERMINALS- PHOSPHOR BRONZE ALLOY, .015/(0.38) THICK.
 - 2) TERMINAL PLATING:
SELECT GOLD IN CONTACT AREA: 50 MICRONS MIN.
SELECT TIN IN PC TAIL AREA: 100 MICRONS MIN.
WITH OVERALL NICKEL UNDERPLATE: 50 MICRONS MIN.
*THE PRIMARY SHIPPING CARTON WILL BE LABELED 'COMPLIANT TO ROHS DIRECTIVE 2002/95/EC AND ELV ANNEX II OF DIRECTIVE 2000/53/EC'. CARTONS WITHOUT THIS LABEL MAY CONTAIN PRODUCT WITH TIN-LEAD IN THE PC TAIL.
 - 3) THESE MODULAR JACKS MEET THE PERFORMANCE REQUIREMENTS OF MOLEX PRODUCT SPECIFICATION PS-42878.
 - 4) CONNECTORS ARE SHIPPED IN THERMOFORMED TRAYS, PER PACKAGING SPECIFICATION PK-42878-492.
 - 5) ALL JACKS ARE DESIGNED TO BE USED WITH .062/(1.57) OR .125/(3.18) THICK P.C. BOARDS.
 - 6) ALL JACKS CONFORM TO AND ACCEPT PLUGS WHICH CONFORM TO FCC RULES AND REGULATIONS PART 68, SUBPART F.
 - 7) ALL JACKS MUST BE CAPABLE OF FITTING INTO MOLEX GAGE G-42410 (CONNECTOR SIZE 8).
 - 8) SEE SHEETS 1 & 4 FOR CONNECTOR SIZE 4.
 - 9) SEE SHEETS 2 & 4 FOR CONNECTOR SIZE 6.
 - 10) ENGRAVED NUMBERS ON HOUSING BODY ARE FOR HOLDING IDENTIFICATION ONLY. THEY ARE NOT INTENDED FOR ASSEMBLY IDENTIFICATION PURPOSES.
 - 11) THIS PART CONFORMS TO CLASS B REQUIREMENTS OF COSMETIC SPECIFICATION PS-45499-002 WITH THE EXCEPTION OF THE SNK WHICH CONFORMS TO CLASS C REQUIREMENTS.

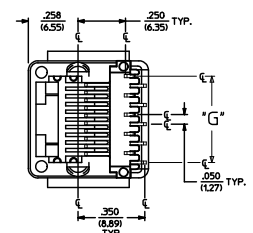
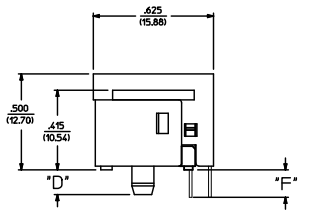
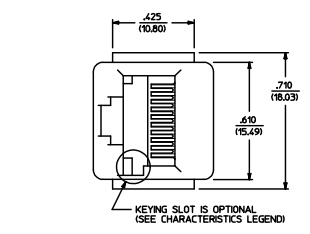
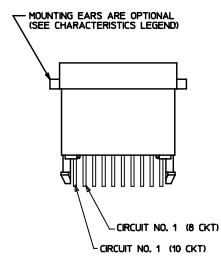
P.C. BOARD THICKNESS	DIM. "D" (MTG. PEGS)	DIM. "F" (P.C. TAILS)	CONNECTOR SIZE	CIRCUIT SIZE	DIM. "G"
.062/(1.57)	.128 (3.25)	.120 +.015/-.025 (3.05 +.38/-.63)	8	10	.450 (11.43)
.125/(3.18)	.191 (4.85)	.205 +.015/-.025 (5.21 +.38/-.63)	8	8	.350 (8.89)
			8	6	.250 (6.35)
			8	4	.150 (3.81)
			8	2	.050 (1.27)



PANEL CUT-OUT FOR CONNECTOR SIZE 8



P.C. BOARD LAYOUT FOR CONNECTOR SIZE 8
10 CIRCUIT SHOWN



SIZE 8 MODULAR JACK LOADED WITH 10 TERMINALS SHOWN ABOVE

ADD COSMETIC SPEC ESD CONTROL PLAN HZ CHKO:HELL APPROVAL:TH REV:	QUALITY SYMBOLS	GENERAL TOLERANCES (UNLESS SPECIFIED)	DIMENSION STYLE	SCALE	DESIGN UNITS	THIRD ANGLE PROJECTION	
	∇ 0 ∇ 0.1	4 PLACES ± .010 3 PLACES ± .010 2 PLACES ± 0.25 1 PLACE ± .010 ANGULAR ±1/2°	IN/MM INCH	IN/MM INCH	1:1	INCH	
	DRAWN BY: BAP CHECKED BY: BAP APPROVED BY: RAS	DATE: 1992/04/09 DATE: 1992/04/09 DATE: 1992/04/09	MATERIAL NO. SEE SHEET 5	DOCUMENT NO. SDA-42878-****	TITLE: ASSEMBLY, VERTICAL LOW PROFILE MODULAR JACKS (CONNECTOR SIZE 8)	MOLEX INCORPORATED	SHEET NO. 3 OF 5
	DRAFT WHERE APPLICABLE MUST REMAIN WITHIN DIMENSIONS						THIS DRAWING CONTAINS INFORMATION THAT IS PROPRIETARY TO MOLEX INCORPORATED AND SHOULD NOT BE USED WITHOUT WRITTEN PERMISSION

ASSEMBLY ITEM NUMBER	PART CHARACTERISTICS				
	EXTERNAL CONNECTOR SIZE	NUMBER OF POSITIONS	P. C. BOARD THICKNESS	POLARIZATION OPTION	MOUNTING EARS OPTION
42878-8408	8 POS. BODY	8	.062	NO	YES
42878-8410	↑	↑	↑	NO	NO
42878-8458	↑	↑	↑	YES	YES
42878-8458	↑	↑	.062	YES	NO
42878-8504	↑	↑	.125	NO	YES
42878-8506	↑	↑	↑	NO	NO
42878-8552	↑	↑	↑	YES	YES
42878-8554	8	.125	YES	NO	NO
42878-8696	6	.062	NO	YES	YES
42878-8698	↑	↑	↑	NO	NO
42878-8744	↑	↑	↑	YES	YES
42878-8746	↑	↑	.062	YES	NO
42878-8792	↑	↑	.125	NO	YES
42878-8794	↑	↑	↑	NO	NO
42878-8840	↑	↑	↑	YES	YES
42878-8842	8 POS. BODY	6	.125	YES	NO

ASSEMBLY ITEM NUMBER	PART CHARACTERISTICS				
	EXTERNAL CONNECTOR SIZE	NUMBER OF POSITIONS	BOARD THICKNESS/ P.C. TAIL OPTION	POLARIZATION OPTION	MOUNTING EARS OPTION
42878-8984	8 POS. BODY	4	.062	NO	YES
42878-8986	↑	↑	↑	NO	NO
42878-9032	↑	↑	↑	YES	YES
42878-9034	↑	↑	.062	YES	NO
42878-9080	↑	↑	.125	NO	YES
42878-9082	↑	↑	↑	NO	NO
42878-9128	↑	↑	↑	YES	YES
42878-9130	↑	↑	.125	YES	NO
42878-9272	↑	2	.062	NO	YES
42878-9274	↑	↑	↑	NO	NO
42878-9320	↑	↑	↑	YES	YES
42878-9322	↑	↑	.062	YES	NO
42878-9368	↑	↑	.125	NO	YES
42878-9370	↑	↑	↑	NO	NO
42878-9416	↑	↑	↑	YES	YES
42878-9418	8 POS. BODY	2	.125	YES	NO

ASSEMBLY ITEM NUMBER	PART CHARACTERISTICS				
	EXTERNAL CONNECTOR SIZE	NUMBER OF POSITIONS	BOARD THICKNESS/ P.C. TAIL OPTION	POLARIZATION OPTION	MOUNTING EARS OPTION
42878-1001	8 POS. BODY	10	.062	NO	YES
42878-1003	↑	↑	.062	NO	NO
42878-1025	↑	↑	.125	NO	YES
42878-1027	↑	↑	↑	NO	NO
42878-1037	↑	↑	↑	YES	YES
42878-1039	8 POS. BODY	10	.125	YES	NO

CHARACTERISTICS LEGEND	
EXTERNAL CONNECTOR BODY DIMENSIONS:	AVAILABLE IN 4, 6, AND 8 POSITION BODY
NUMBER OF CONTACT POSITIONS:	CONNECTOR SIZE 4 ACCOMMODATES 2, OR 4 TERMINALS; CONNECTOR SIZE 6 ACCOMMODATES 2, 4, OR 6 TERMINALS; CONNECTOR SIZE 8 ACCOMMODATES 2, 4, 6, 8, OR 10 TERMINALS
POLARIZATION OPTION: (AVAILABLE ON CONNECTOR SIZE 8 ONLY)	"NO" - WITHOUT KEYING SLOT "YES" - WITH KEYING SLOT
MOUNTING EARS OPTION:	"YES" - PART WITH MOUNTING EARS "NO" - PART WITHOUT MOUNTING EARS
(SEE SHEET 3 FOR PART DESCRIPTIONS AND DIMENSIONS)	

SEE SHEET ONE EC NO. UEP2004-167 DRINKLSCHMIDT 2004/03/03 CHOKLSCHMIDT 2004/03/03 APPROVED DATE 2004/03/03 H	QUALITY SYMBOLS	GENERAL TOLERANCES (UNLESS SPECIFIED)	SCALE	DESIGN UNITS	THIRD ANGLE PROJECTION	REVISE ON CAD ONLY
	▽0	mm INCH	---	INCH		ASSEMBLY, VERTICAL LOW PROFILE MODULAR JACKS (CONNECTOR SIZE 8)
	▽0	4 PLACES ±--- ±--- 3 PLACES ±--- ±--- 2 PLACES ±--- ±--- 1 PLACE ±--- ±---	IN/MM	DATE		
		ANGULAR ±1/2°	DRAFT WHERE APPLICABLE	DRAWN BY	DATE	MOLEX INCORPORATED

MUST REMAIN WITHIN DIMENSIONS

THIS DRAWING CONTAINS INFORMATION THAT IS PROPRIETARY TO MOLEX INCORPORATED AND SHOULD NOT BE USED WITHOUT WRITTEN PERMISSION