



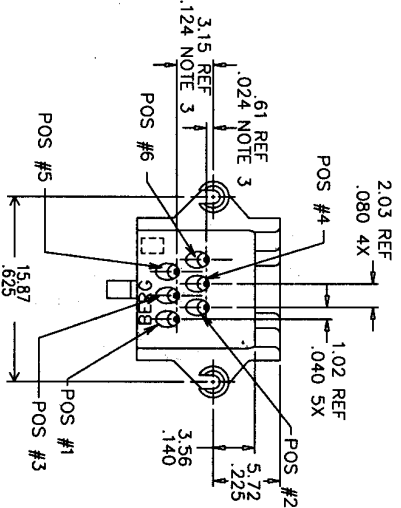
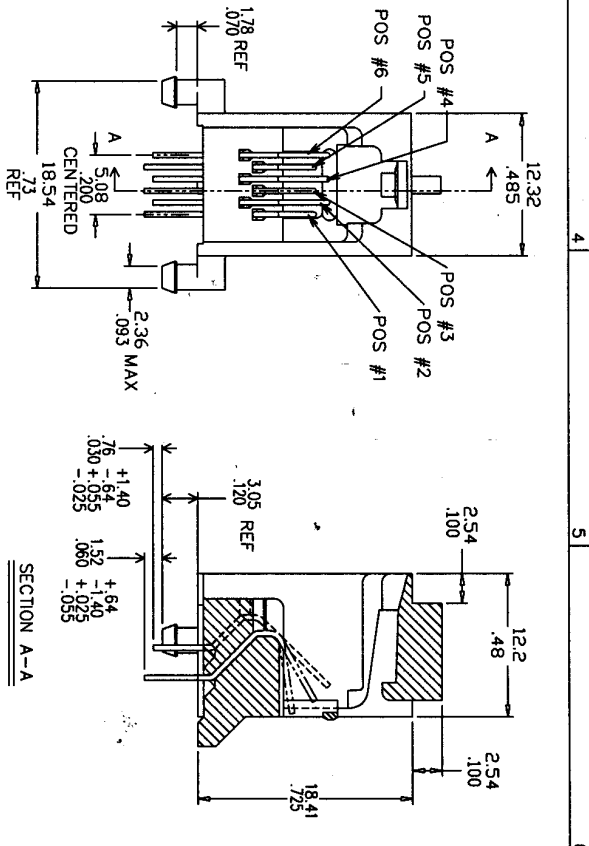
All rights strictly reserved. Reproduction or issue to third parties in any form without the prior written authority of the proprietor.
 Property of c BERG ELECTRONICS.
 Copyright BERG ELECTRONICS by

Tous droits strictement reserves. Reproduction ou communication a des tiers int sans aucune forme que ce soit sans autorisation ecrite du proprietaire.
 propriete de c BERG ELECTRONICS.
 Droits de reproduction BERG ELECTRONICS by

PRODUCT NO	POS NOS WITH CONTACTS	HOUSING MATERIAL	CONTACT PLATING
66011-001/-001LF	2,3,4,5	SUPER TOUGH NYLON UL 94V-0 GRAY	.76u / 30u * AU OVER 2.5u / 100u * NI
-002/-002LF	ALL		
-003/-003LF	2 & 5		
-004/-004LF	3 & 4	SUPER TOUGH NYLON UL 94V-0 GRAY	
-005/-005LF	2,3,4,5	SUPER TOUGH NYLON UL 94V-0 BLACK	.76u / 30u * AU OVER 2.5u / 100u * NI
-006/-006LF	ALL	SUPER TOUGH NYLON UL 94V-0 GRAY	.76u / 30u * CXT
-007/-007LF	2,3,4,5		.76u / 30u * CXT
-008/-008LF	2,3,4,5		1.27u / 50u * AU OVER 2.5u / 100u * NI
-009/-009LF	ALL	SUPER TOUGH NYLON UL 94V-0 GRAY	0.15u / 6u * GOLD FLASH
66011-010/-010LF	2,3,4,5	SUPER TOUGH NYLON UL 94V-0 BLACK	.76u / 30u * CXT

LEAD FREE PRODUCT NO.

- NOTES:
- FOR VISUAL, MECHANICAL AND FUNCTIONAL REQUIREMENTS SEE SPECIFICATION BUS-12-084.
 - GOLD WIRE MATERIAL: PHOS BRONZE ALLOY.
UNS-C51000, 135-150M PSI TENSILE PLATING: SEE TABLE
 - DIMENSIONAL TOLERANCE: ±.25/±.010 AT BASE
±.64/±.025 AT TIP
 - FOR ADDITIONAL APPLICATION AND MOUNTING INFORMATION SEE DRAWING TA-390.
 - HOUSING MATERIAL: SEE TABLE.
 - TEST METHOD PER UL-1863, SECTION 22.2
 - THE PRODUCT MEETS EUROPEAN UNION DIRECTIVES AND OTHER COUNTRY REGULATIONS AS DESCRIBED IN GS-22-008.
 - THE HOUSING WILL WITHSTAND EXPOSURE TO 260°C PEAK TEMPERATURE FOR 10 SECONDS IN A WAVE SOLDER APPLICATION WITH A 1.60mm MINIMUM THICK CIRCUIT BOARD.
 - IF LF P/N PACKAGING MEETS GS-14-920 SPECIFICATION.



rev.	scrn no	dr	date	tolerance unless otherwise specified	CUSTOMER COPY	title	product family	code
1	100087	DR	06/01/97	0 ± 0.25	FCI	MOD JACK ASSY	(623 PCB)	TWN
2	160059	CL	06/01/97	.00 ± 0.13				1 OF 1
3	160059	CL	06/01/97	.000 ± 0.05				
4	160059	CL	06/01/97	± .2"				
5	160059	CL	06/01/97	± .2"				
6	160059	CL	06/01/97	± .2"				
7	160059	CL	06/01/97	± .2"				
8	160059	CL	06/01/97	± .2"				
9	160059	CL	06/01/97	± .2"				
10	160059	CL	06/01/97	± .2"				
11	160059	CL	06/01/97	± .2"				
12	160059	CL	06/01/97	± .2"				
13	160059	CL	06/01/97	± .2"				
14	160059	CL	06/01/97	± .2"				
15	160059	CL	06/01/97	± .2"				
16	160059	CL	06/01/97	± .2"				
17	160059	CL	06/01/97	± .2"				
18	160059	CL	06/01/97	± .2"				
19	160059	CL	06/01/97	± .2"				
20	160059	CL	06/01/97	± .2"				
21	160059	CL	06/01/97	± .2"				
22	160059	CL	06/01/97	± .2"				
23	160059	CL	06/01/97	± .2"				
24	160059	CL	06/01/97	± .2"				
25	160059	CL	06/01/97	± .2"				
26	160059	CL	06/01/97	± .2"				
27	160059	CL	06/01/97	± .2"				
28	160059	CL	06/01/97	± .2"				
29	160059	CL	06/01/97	± .2"				
30	160059	CL	06/01/97	± .2"				
31	160059	CL	06/01/97	± .2"				
32	160059	CL	06/01/97	± .2"				
33	160059	CL	06/01/97	± .2"				
34	160059	CL	06/01/97	± .2"				
35	160059	CL	06/01/97	± .2"				
36	160059	CL	06/01/97	± .2"				
37	160059	CL	06/01/97	± .2"				
38	160059	CL	06/01/97	± .2"				
39	160059	CL	06/01/97	± .2"				
40	160059	CL	06/01/97	± .2"				
41	160059	CL	06/01/97	± .2"				
42	160059	CL	06/01/97	± .2"				
43	160059	CL	06/01/97	± .2"				
44	160059	CL	06/01/97	± .2"				
45	160059	CL	06/01/97	± .2"				
46	160059	CL	06/01/97	± .2"				
47	160059	CL	06/01/97	± .2"				
48	160059	CL	06/01/97	± .2"				
49	160059	CL	06/01/97	± .2"				
50	160059	CL	06/01/97	± .2"				
51	160059	CL	06/01/97	± .2"				
52	160059	CL	06/01/97	± .2"				
53	160059	CL	06/01/97	± .2"				
54	160059	CL	06/01/97	± .2"				
55	160059	CL	06/01/97	± .2"				
56	160059	CL	06/01/97	± .2"				
57	160059	CL	06/01/97	± .2"				
58	160059	CL	06/01/97	± .2"				
59	160059	CL	06/01/97	± .2"				
60	160059	CL	06/01/97	± .2"				
61	160059	CL	06/01/97	± .2"				
62	160059	CL	06/01/97	± .2"				
63	160059	CL	06/01/97	± .2"				
64	160059	CL	06/01/97	± .2"				
65	160059	CL	06/01/97	± .2"				
66	160059	CL	06/01/97	± .2"				
67	160059	CL	06/01/97	± .2"				
68	160059	CL	06/01/97	± .2"				
69	160059	CL	06/01/97	± .2"				
70	160059	CL	06/01/97	± .2"				
71	160059	CL	06/01/97	± .2"				
72	160059	CL	06/01/97	± .2"				
73	160059	CL	06/01/97	± .2"				
74	160059	CL	06/01/97	± .2"				
75	160059	CL	06/01/97	± .2"				
76	160059	CL	06/01/97	± .2"				
77	160059	CL	06/01/97	± .2"				
78	160059	CL	06/01/97	± .2"				
79	160059	CL	06/01/97	± .2"				
80	160059	CL	06/01/97	± .2"				
81	160059	CL	06/01/97	± .2"				
82	160059	CL	06/01/97	± .2"				
83	160059	CL	06/01/97	± .2"				
84	160059	CL	06/01/97	± .2"				
85	160059	CL	06/01/97	± .2"				
86	160059	CL	06/01/97	± .2"				
87	160059	CL	06/01/97	± .2"				
88	160059	CL	06/01/97	± .2"				
89	160059	CL	06/01/97	± .2"				
90	160059	CL	06/01/97	± .2"				
91	160059	CL	06/01/97	± .2"				
92	160059	CL	06/01/97	± .2"				
93	160059	CL	06/01/97	± .2"				
94	160059	CL	06/01/97	± .2"				
95	160059	CL	06/01/97	± .2"				
96	160059	CL	06/01/97	± .2"				
97	160059	CL	06/01/97	± .2"				
98	160059	CL	06/01/97	± .2"				
99	160059	CL	06/01/97	± .2"				
100	160059	CL	06/01/97	± .2"				

PDM: Rev:N STATUS:Released Printed: Mar 09, 2007