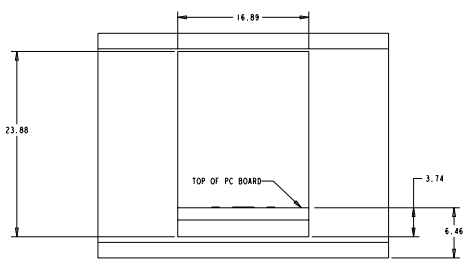
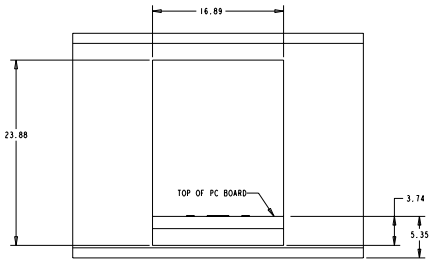




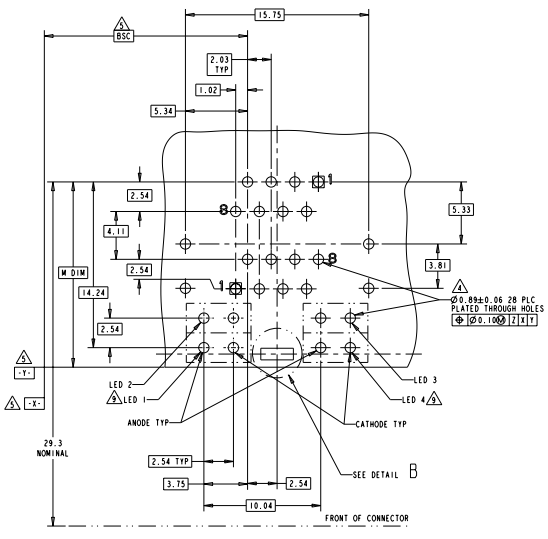
REV		DESCRIPTION	DATE	BY	CHK
AA	00	SEE SHEET 1			



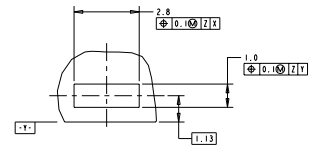
ATCA PANEL AND PRINTED CIRCUIT BOARD LAYOUT



AMC PANEL AND PRINTED CIRCUIT BOARD LAYOUT



PC BOARD LAYOUT (COMPONENT SIDE)



DETAIL B  
SCALE 12:1  
PLATED PADS REQUIRED FOR 1888653 - 2, 3, 4, 5, 6, 11-13 (PRODUCT WITH GROUNDING CLIPS)

DATE: 08/24/2010	BY: PACE ELECTRONICS CORPORATION	ALL RIGHTS RESERVED	DATE: 08/24/2010	BY: PACE ELECTRONICS CORPORATION	ALL RIGHTS RESERVED
REV: AA	00	SEE SHEET 1	REV: AA	00	SEE SHEET 1
DATE: 08/24/2010	BY: PACE ELECTRONICS CORPORATION	ALL RIGHTS RESERVED	DATE: 08/24/2010	BY: PACE ELECTRONICS CORPORATION	ALL RIGHTS RESERVED
DATE: 08/24/2010	BY: PACE ELECTRONICS CORPORATION	ALL RIGHTS RESERVED	DATE: 08/24/2010	BY: PACE ELECTRONICS CORPORATION	ALL RIGHTS RESERVED
DATE: 08/24/2010	BY: PACE ELECTRONICS CORPORATION	ALL RIGHTS RESERVED	DATE: 08/24/2010	BY: PACE ELECTRONICS CORPORATION	ALL RIGHTS RESERVED