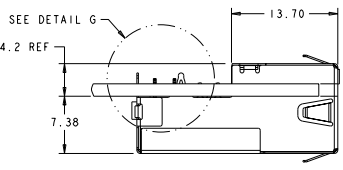
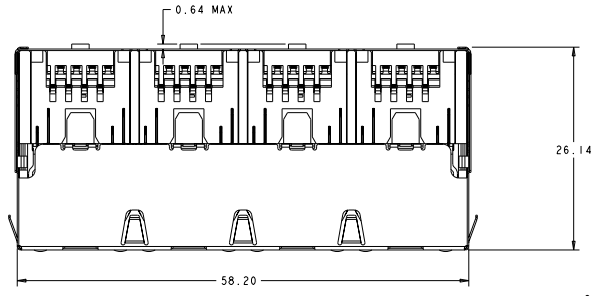
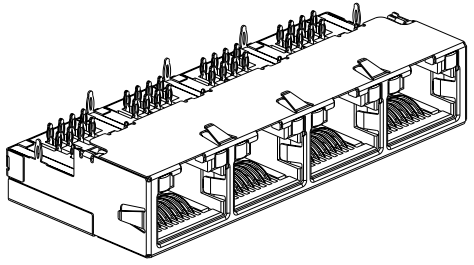
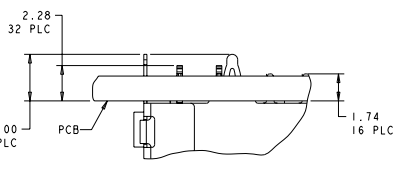
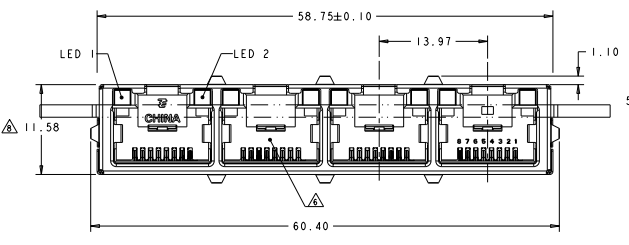


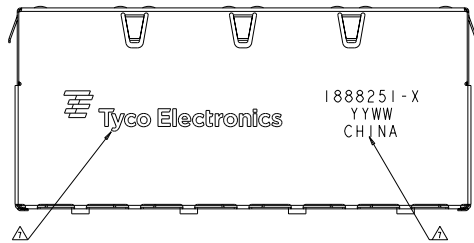
REV	DATE	DESCRIPTION	BY	CHK	APP
B3	REVISED ECR-10-006819		08/20/18	TY	ST
B4	ECR-10-014400		10/02/18	KS	MD, R
B5	REVISED PER ECR-10-016989		11/02/18	KS	MD, R



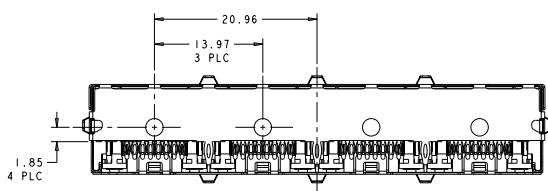
VIEW SHOWN ASSEMBLED TO PCB ONLY



DETAIL G SCALE 8:1



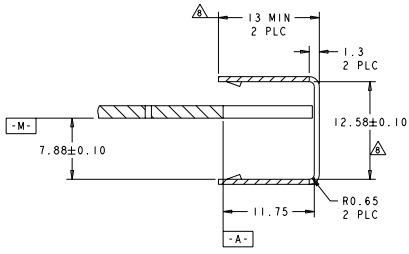
- MATERIALS:
HOUSING: BLACK PBT, 94V-0.
OVERMOLDED INSERT: BLACK LCP, 94V-0.
SHIELD: COPPER ALLOY WITH 0.76µm MIN NICKEL PLATE
CONTACTS: PHOSPHOR BRONZE WITH 1.27µm MIN GOLD AT MATING INTERFACE OVER 1.27µm MIN NICKEL UNDERPLATE.
 - PERFORMANCE:
INSERTION LOSS: 0.4dB @ 100 MHz.
RETURN LOSS: 12.0dB @ 100 MHz.
CROSSTALK ATTENUATION: -43dB MINIMUM @ 100MHz
 - LED'S COMPLIANT WITH IEC60825-1 SAFETY OF LASER PRODUCTS WHEN OPERATED AT CURRENT OF 20mA.
 - ALL DIMENSIONS NOMINAL.
 - RECOMMENDED MOTHERBOARD PCB THICKNESS: 1.60±0.16.
- ▲ RJ45 PORT CONFORMS TO FCC RULES AND REGULATIONS PART 68 SUB-PART F.
- ▲ TE LOGO, PART NUMBER, DATE CODE AND COUNTRY OF ORIGIN TO BE MARKED IN APPROXIMATE LOCATION SHOWN.
- ▲ THIS DIMENSION MEETS THE ADVANCED MEZZANINE CARD (AMC) SPECIFICATION.



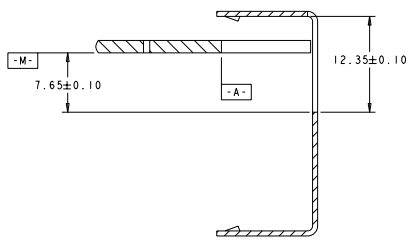
LED #1	LED #2	PART NUMBER
GREEN	GREEN	1888251-4
-	-	1888251-3
GRN/YEL	GRN/YEL	1888251-2
GREEN	YELLOW	1888251-1

REV: 00 DATE: 08/20/18 BY: TYCO ELECTRONICS CORPORATION	PART: 1888251-X TITLE: CONNECTOR ASSEMBLY, LOW PROFILE, PRESS FIT, MODULAR JACK, 1X4, RJ45	DRAWN: J. J. J. CHECKED: J. J. J. DATE: 08/20/18	Tyco Electronics Harrisburg, PA 17105-3600
MATERIAL: 1888251-X FINISH: 1888251-X COLOR: 1888251-X	APPLICATION SPEC: 1888251-X REVISION: 00	SIZE: 1888251-X WEIGHT: 1888251-X	CUSTOMER DRAWING: 1888251-X

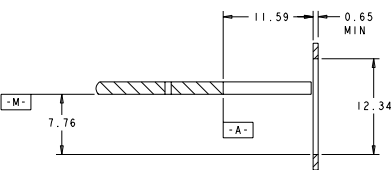
REV. NO.		DESCRIPTION	DATE	BY	CHK
00	00	SEE SHEET 1			



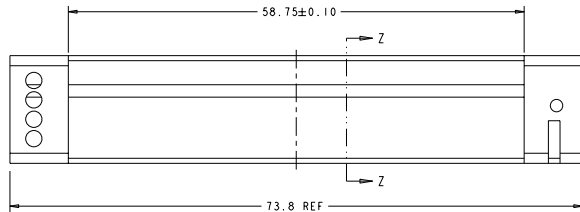
SECTION Z-Z



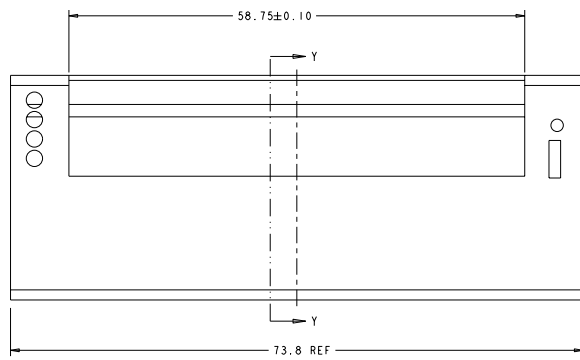
SECTION Y-Y



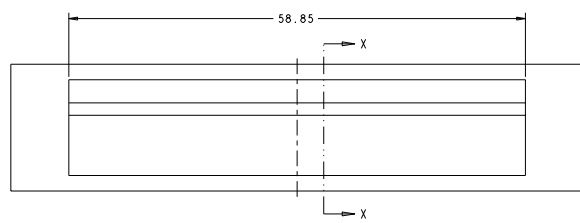
SECTION X-X



AMC SINGLE WIDTH, HALF HEIGHT MODULE FACE PLATE



AMC SINGLE WIDTH, FULL HEIGHT MODULE FACE PLATE



STANDARD FACE PLATE

TITLE SHEET FOR FABRICATOR REVISIONS FOR FABRICATOR 00 00000000 BY TECH ELECTRONICS CORPORATION ALL RIGHTS RESERVED		REV. NO. 00 DATE 00/00/00 DRAWN BY CHECKED BY APPROVED BY	PART NO. 00779 REV. 00 DATE 00/00/00 DRAWN BY CHECKED BY APPROVED BY	TECH ELECTRONICS CORPORATION 114-13139 114-13139 114-13139	TECH ELECTRONICS CORPORATION Harrisburg, PA 17105-3600 CONNECTOR ASSEMBLY, LOW PROFILE, PRESS FIT, MODULAR JACK, 1X4, RJ45 00779 (C)-1888251 CUSTOMER DRAWING
---	--	---	---	---	--