

DRAWING MADE IN THIRD ANGLE PROJECTION

3

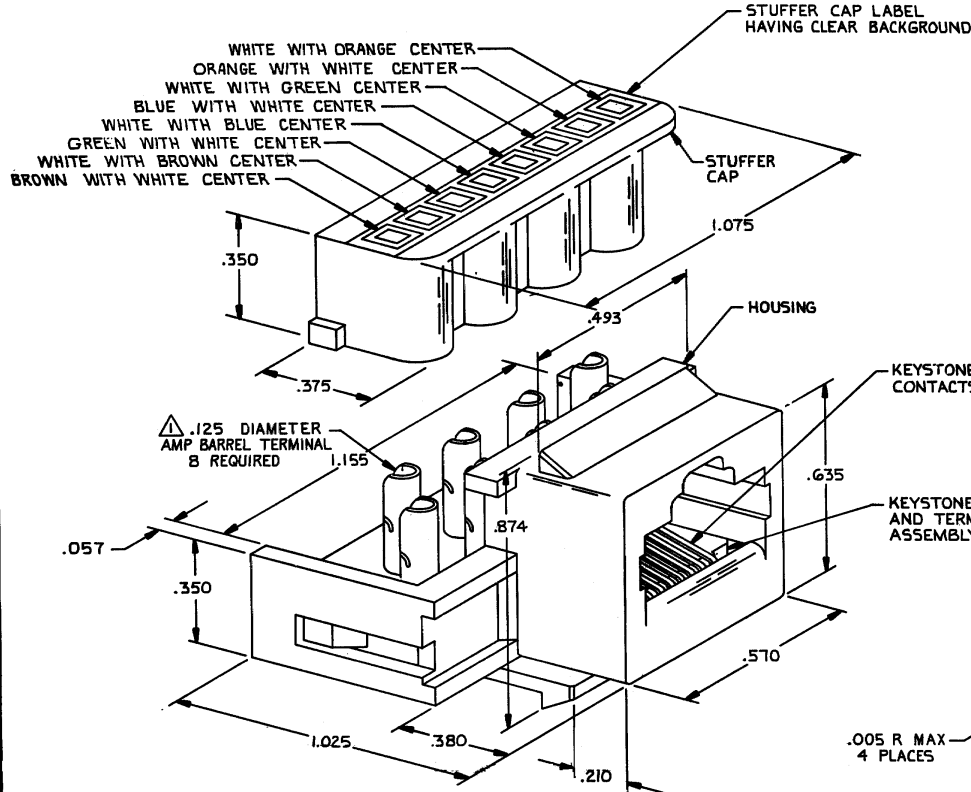
2

1

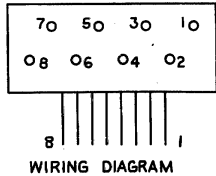
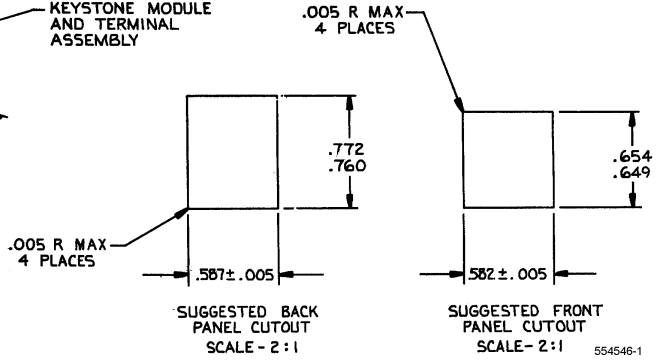
LOC DIST
HM 00

THIS DRAWING IS UNPUBLISHED. RELEASED FOR PUBLICATION 19
 © COPYRIGHT 19 BY AMP INCORPORATED, HARRISBURG, PA. ALL INTERNATIONAL RIGHTS RESERVED. AMP PRODUCTS MAY BE COVERED BY U.S. AND FOREIGN PATENTS AND/OR PATENTS PENDING.

REVISIONS				DATE	APPROVED
P	F	ZONE	LTR		
D		D2		REV ECO-07-023206	LH SA



- 1. BARREL TERMINALS WILL ACCEPT ONE OR TWO WIRES OF THE SAME SIZE PER TERMINAL. MAX WIRE SIZE IS 22 AWG WITH .060 DIAMETER INSULATION. MIN WIRE SIZE IS 26 AWG WITH .037 DIAMETER INSULATION.
- 2. STUFFER CAP SHIPPED NOT ASSEMBLED.
- 3. MATERIALS:
 STUFFER CAP - POLYCARBONATE, NATURAL.
 BARREL TERMINAL - TIN COATED PHOSPHOR BRONZE
 LABEL - ADHESIVE BACKED POLYESTER
 CONTACTS - NICKEL PLATED HIGH STRENGTH COPPER ALLOY HAVING SELECTIVE GOLD PLATING IN CONTACT AREA AND SELECTIVE TIN PLATING IN BARREL TERMINAL AREA.
 HOUSING & KEYSTONE - THERMOPLASTIC, BLACK 94V-0 RATED
- 4. MOUNTING PANEL THICKNESS - .062 NOM.



UNLESS OTHERWISE SPECIFIED DIMENSIONS ARE IN INCHES. TOLERANCES ON: DECIMALS ± .010 ANGLES ± .010		CONTRACT NO 8-10-84		PART NO	
MATERIAL		DR C. 4024	AMP AMP INCORPORATED Harrisburg, Pa. 17105		
FINISH		CHK 9-10-84	NAME KEYSTONE JACK KIT, 8 POSITION		
OTHER APPD		APPD Gene Reed 9-11-84	SIZE C	FSCM NO 00779	DRAWING NO 554546
		PSGN APPD	SCALE 4:1	SHEET 1 OF 1	

CUSTOMER DRAWING

WAS 1244-83-15-1

AMP 1471-7