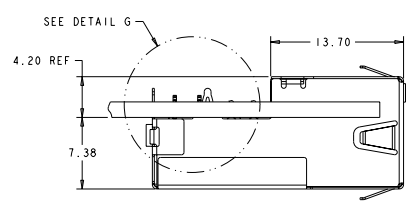
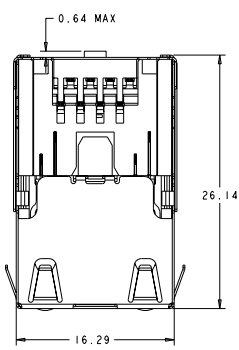
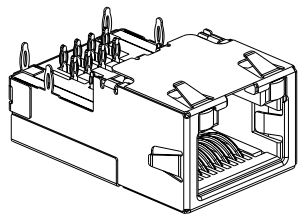
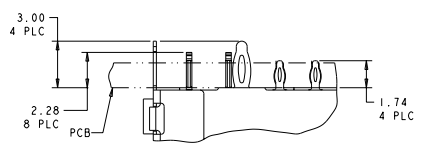
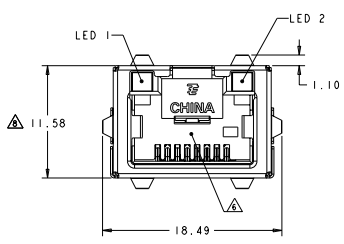


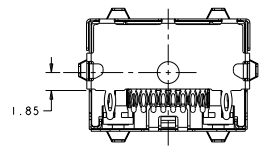
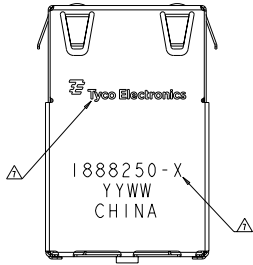
REV	DATE	DESCRIPTION	BY	CHK	APP
B	ECR-09-002591		SPINERD	TY	ST
B1	ECR-09-009133		SPINERD	TY	ST
SZ	ECR-10-014000		THOMSON	AS	MR
B3	REVISED PER ECR-10-016889		THOMSON	AS	MR



VIEW SHOWN ASSEMBLED TO PCB ONLY



DETAIL G SCALE 8:1

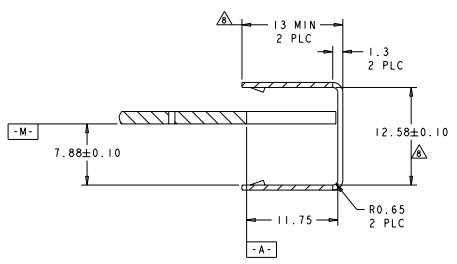


- MATERIALS:
HOUSING: BLACK THERMOPLASTIC, 94V-0.
SHIELD: COPPER ALLOY WITH 0.76µm MIN NICKEL PLATE
CONTACTS: PHOSPHOR BRONZE WITH 1.27µm MIN GOLD AT MATING INTERFACE OVER 1.27µm MIN NICKEL UNDERPLATE.
 - PERFORMANCE:
INSERTION LOSS: 0.4dB @ 100 MHz.
RETURN LOSS: 12.0dB @ 100 MHz.
CROSSTALK ATTENUATION: -43dB MINIMUM @ 100 MHz
 - LED'S COMPLIANT WITH IEC60825-1 SAFETY OF LASER PRODUCTS WHEN OPERATED AT CURRENT OF 20mA.
 - ALL DIMENSIONS NOMINAL.
 - RECOMMENDED MOTHERBOARD PCB THICKNESS: 1.60±0.16.
- △ RJ45 PORT CONFORMS TO FCC RULES AND REGULATIONS PART 98 SUB-PART F.
 - △ TE LOGO, PART NUMBER, DATE CODE AND COUNTRY OF ORIGIN TO BE MARKED IN APPROXIMATE LOCATION SHOWN.
 - △ THIS DIMENSION MEETS THE ADVANCED MEZZANINE CARD (AMC) SPECIFICATION.

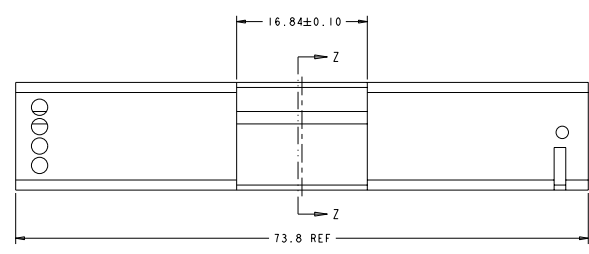
LED #1	LED #2	PART NUMBER
YELLOW	GREEN	1888250-5
GREEN	GREEN	1888250-4
-	-	1888250-3
GRN/YEL	GRN/YEL	1888250-2
GREEN	YELLOW	1888250-1

DATE: 08/20/2008 BY: TERRY ELECTRONICS CORPORATION ALL RIGHTS RESERVED		Tyco Electronics Harrisburg, PA 17105-3600	
DIMENSIONS: mm TOLERANCES: UNLESS OTHERWISE SPECIFIED DECIMALS: 0.13 FRACTIONS: 1/16	SERIAL: SPE2008 REL: SPE2008 DATE: SPE2008 DRAWN: 116-13139 REV: 1	CONNECTOR ASSEMBLY, LOW PROFILE, PRESS FIT, MODULAR JACK, 1X1, RJ45	PART NUMBER: 1888250 CUSTOMER DRAWING: A 00779 ©-1888250 SCALE: 1:1 SHEET: 1 OF 3

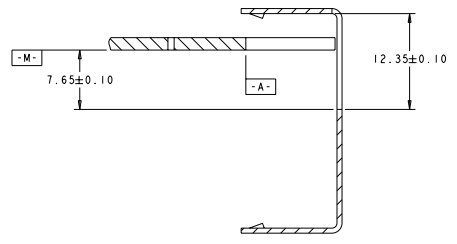
REVISOR		REVISIONS	
DATE	BY	DESCRIPTION	DATE
00	AA	SEE SHEET 1	



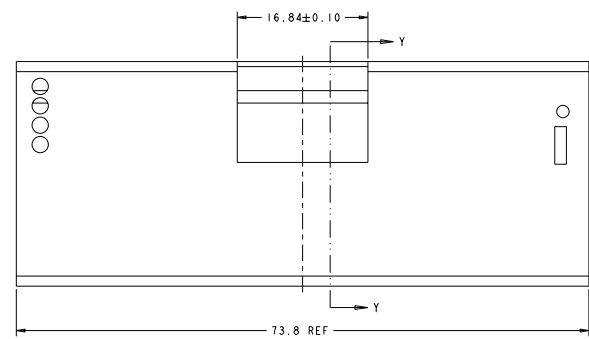
SECTION Z-Z



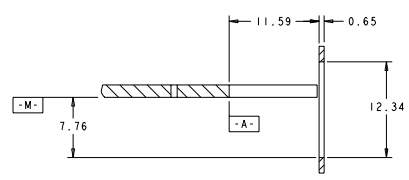
AMC SINGLE WIDTH, HALF HEIGHT MODULE FACE PLATE
SCALE 4:1



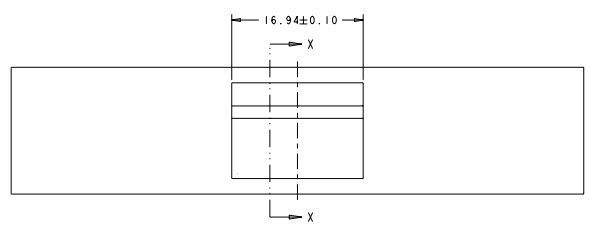
SECTION Y-Y



AMC SINGLE WIDTH, FULL HEIGHT MODULE FACE PLATE
SCALE 4:1



SECTION X-X



STANDARD FACE PLATE
SCALE 4:1

TITLE: CONNECTOR ASSEMBLY, LOW PROFILE, PRESS FIT, MODULAR JACK, 1X1, RJ45 PART NO: 00779		DATE: 08/24/2016 DRAWN: [Signature] CHECKED: [Signature]	
MATERIAL: [Blank]		FINISH: [Blank]	
QUANTITY: [Blank]		UNIT: [Blank]	
WEIGHT: [Blank]		PRICE: [Blank]	
TOLERANCES: [Blank]		DIMENSIONS: [Blank]	
SURFACE FINISH: [Blank]		TYPICAL DIMENSIONS: [Blank]	
SPECIAL INSTRUCTIONS: [Blank]		CUSTOMER DRAWING: [Blank]	