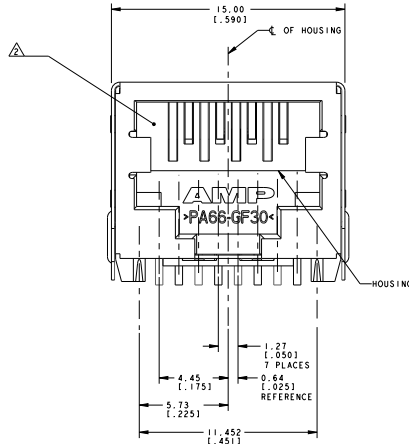
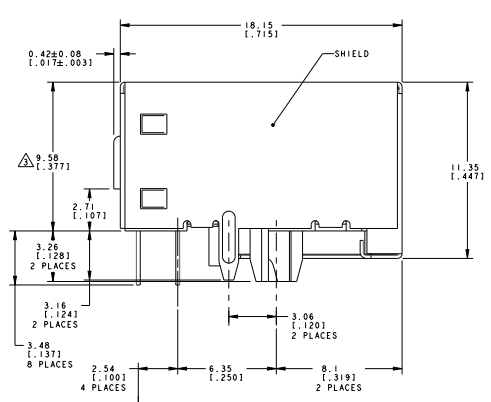
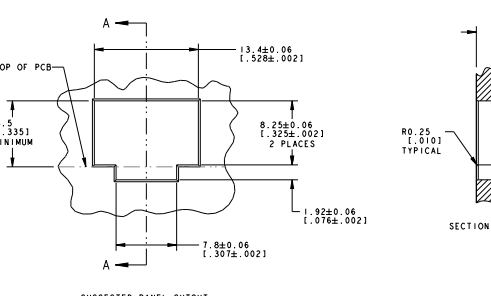
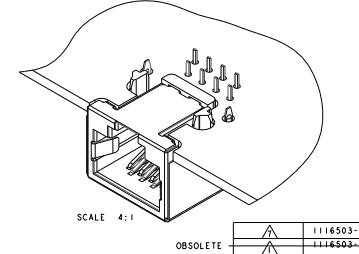
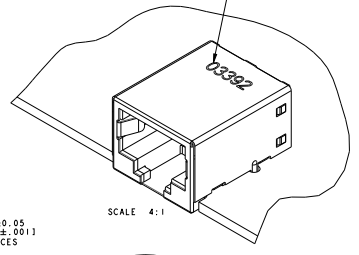
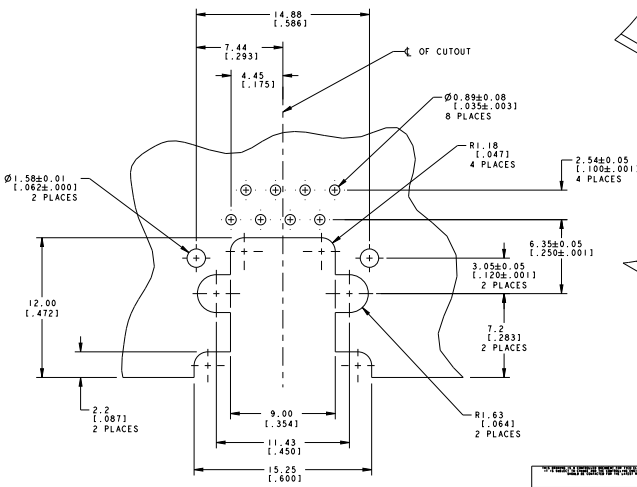
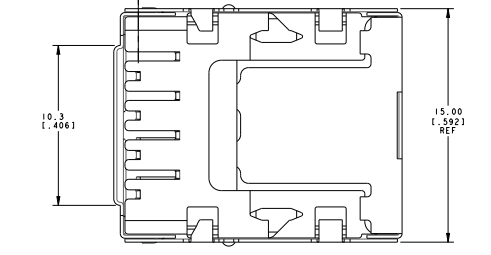


REV	DATE	DESCRIPTION	BY	CHK
AA	22			
K	ECR-11-0023-04		ZHU/SHH	LM
L	ECO-06-026444		ZHU/SHH	JM
M	ECR-06-015623		ZHU/SHH	S.L.
N	ECR-10-024756		ZHU/SHH	JJ



- △ MATERIAL: HOUSING - HIGH TEMPERATURE NYLON, BLACK, UL 94V-0, TERMINALS - 0.25(±0.01) THICK PHOSPHOR BRONZE PLATED WITH 3.8(±0.00050) MINIMUM THICK BRIGHT TIN-LEAD IN SOLDER AREA, AREA: 1.27(±0.00050) MINIMUM GOLD IN LOCALIZED PLATE AREA, ENTIRE TERMINAL PLATED WITH 1.27(±0.00050) MINIMUM THICK NICKEL.
- SHIELD - 0.11(±0.003) MIN THICK COPPER ZINC ALLOY, PREPLATED WITH 2.0-4.0(±0.00079-0.00157) THICK TIN OVER 1.27(±0.00050) MIN THICK NICKEL.
- △ JACK CAVITY CONFORMS TO FCC RULES AND REGULATIONS PART 68, SUBPART F.
- △ THIS DIMENSION REPRESENTS THE TOTAL HEIGHT OF THE CONNECTOR FROM THE TOP OF THE PCB BOARD.
- 4. PACKAGED 66 ASSEMBLIES PER PVC TRAY, 396 PER BOX.
- 5. DIELECTRIC WITHSTANDING VOLTAGE BETWEEN SHIELD AND TERMINAL IS 1500 VAC.
- △ MANUFACTURING DATE CODE:
 ORIENTED AND LOCATED APPROXIMATELY AS SHOWN, BLACK INK STAMP, TEXT HEIGHT APPROXIMATELY 2MM.
 FIRST 2 DIGITS = LAST 2 DIGITS OF YEAR
 NEXT 2 DIGITS = MANUFACTURING WORK WEEK
 LAST DIGIT = DAY OF WEEK WITH SUNDAY = 1
- △ MATERIAL: HOUSING - HIGH TEMPERATURE NYLON, BLACK, UL 94V-0, TERMINALS - 0.25(±0.01) THICK PHOSPHOR BRONZE PLATED WITH 3.8(±0.00050) MINIMUM THICK BRIGHT TIN-LEAD IN SOLDER AREA, AREA: 1.27(±0.00050) MINIMUM GOLD IN LOCALIZED PLATE AREA, ENTIRE TERMINAL PLATED WITH 1.27(±0.00050) MINIMUM THICK NICKEL.
- SHIELD - 0.11(±0.003) MIN THICK COPPER ZINC ALLOY, PREPLATED WITH 2.0-4.0(±0.00079-0.00157) THICK TIN OVER 1.27(±0.00050) MIN THICK NICKEL.



SUGGESTED PRINTED CIRCUIT BOARD LAYOUT COMPONENT SIDE SCALE 6:1

DATE: 07/19/99		BY: ZHU/SHH		CHECKED: ZHU/SHH	
DRAWN: ZHU/SHH		DATE: 07/19/99		SCALE: 1:1	
MATERIAL: P.F. IN SW		PART NUMBER: 1116503-2		REVISED TO: -	
WEIGHT: 3.49 grams		CAGE CODE: 1116503		SHEET: 1 OF 1	