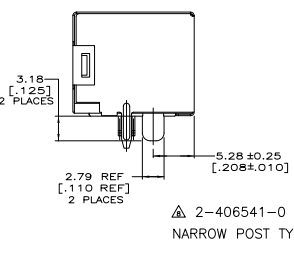
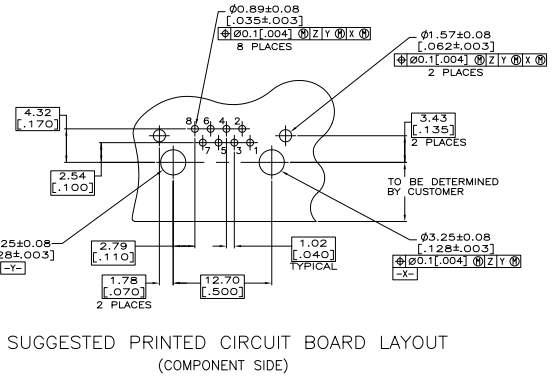
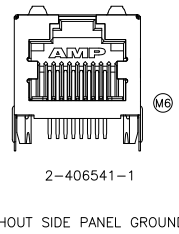
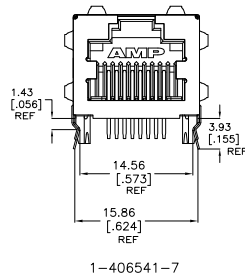
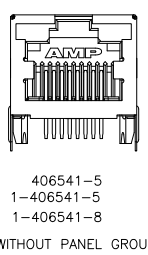


- △ MATERIAL:
 HOUSING - HIGH TEMPERATURE THERMOPLASTIC,
 COLOR: BLACK, UL94V-0
 TERMINALS - 0.36[.014] THICK PHOS BRONZE
 PLATED WITH 3.81µm[.000150] MINIMUM THICK
 (SEE P/N TABLE) IN SOLDER AREA: 1.27µm
 [.000050] MINIMUM GOLD IN LOCALIZED PLATE
 AREA. ENTIRE TERMINAL PLATED WITH 1.27µm
 [.000050] MINIMUM THICK NICKEL.
 SHIELD - 0.196[.0077] THICK COPPER ZINC ALLOY
 PREPLATED WITH 1.27µm[.000050] MINIMUM SATIN
 NICKEL WITH 2.03µm[.000080] MINIMUM TIN
 POST DIPPED ON PCB GROUND TABS.
- 2. JACK CAVITY CONFORMS TO FCC RULES AND
 REGULATIONS PART 68, SUBPART F.
- △ SUGGESTED PANEL OPENING DIMENSIONS.
- △ SUGGESTED CLEARANCE BETWEEN TOP OF CONNECTOR
 AND TOP PANEL OPENING.
- △ ON 406541-4 & 1-406541-4 LOWER RIGHT HAND
 PANEL GROUND TAB IS NOT PRESENT.
- △ MANUFACTURING DATE CODE:
 LOCATED APPROX. AS SHOWN.
 FIRST 2 DIGITS = LAST 2 DIGITS OF YEAR.
 NEXT 2 DIGITS = MANUFACTURING WORK WEEK,
 LAST DIGIT = DAY OF WEEK WITH SUNDAY = 1.
- △ OBSOLETE PARTS: OBSOLETE CIS STREAMLINING PER
 D.RENAUD/D.SINISI



TERMINAL PLATING	PACKAGING	PANEL GROUNDS	DIM A	PART NUMBER
OBsolete				2-406541-1
				2-406541-0
				1-406541-9
				1-406541-8
				1-406541-7
				1-406541-6
				1-406541-5
				1-406541-4
				1-406541-3
				1-406541-1
				406541-6
				406541-5
				406541-4
				406541-3
				406541-1

THIS DRAWING IS A CONTROLLED DOCUMENT		DATE		REVISED		BY		APP	
INCHES	MM (INCHES)	DATE	REVISED	DATE	REVISED	BY	APP	DATE	REVISED
CUSTOMER DRAWING		DATE	REVISED	DATE	REVISED	BY	APP	DATE	REVISED
A1		00779	G=406541						