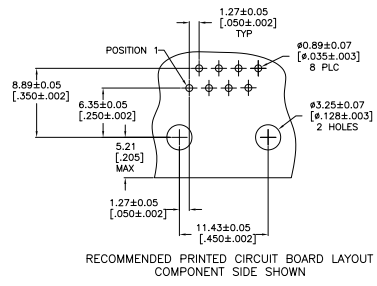
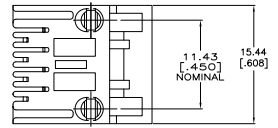
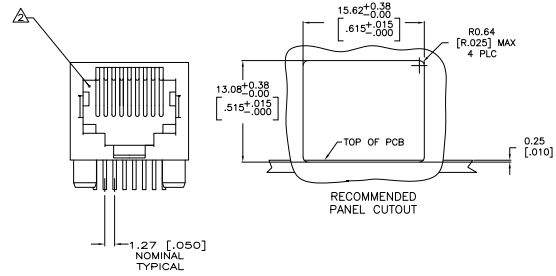
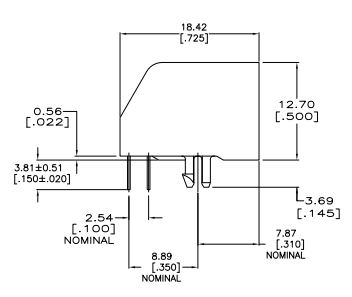


THIS DRAWING IS UNPUBLISHED. ALL RIGHTS RESERVED.
 © 2008 TETRA ELECTRONICS CORPORATION. ALL RIGHTS RESERVED.

REV	DATE	DESCRIPTION	BY	APP
AA	00			
B	02-07-2007			PR



- MATERIAL:
 HOUSING - PBT POLYESTER, COLOR: BLACK
 TERMINAL - 0.36 [.014] THICK PHOS
 BRONZE PLATED WITH 1.27µm [.000050]
 MINIMUM THICK HARD GOLD IN LOCALIZED
 GOLD PLATE AREA AND 2.03µm [.000080]
 MINIMUM THICK MATTE TIN IN SOLDER AREA
 OVER 1.27µm [.000050] THICK NICKEL
 UNDERPLATE.
- CAVITY CONFORMS TO FCC RULES AND
 REGULATIONS PART 68, SUBPART F.
- DIMENSIONS ARE MAXIMUM UNLESS
 OTHERWISE SPECIFIED.
- BULK PACKAGED IN A TRAY.
- 37 ASSEMBLIES PACKAGED PER TUBE

△	B	5555164-4
△	B	5555164-1
△	PACKAGED	TERMINALS REQUIRED
		PART NUMBER

THIS DRAWING IS A CONTROLLED DOCUMENT.		DATE	108-1163	REV	1
DESIGNED BY	REVIEWED BY	DATE	114-2048	REV	1
DRAWN BY	CHECKED BY	DATE	108-1163	REV	1
ISSUED BY	APPROVED BY	DATE	114-2048	REV	1
DATE	114-2048	REV	1	1	1
CUSTOMER DRAWING	DATE	114-2048	REV	1	1