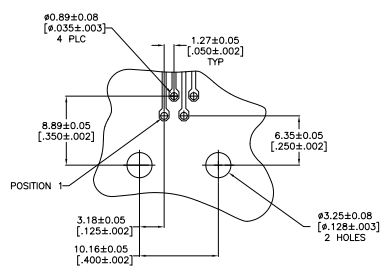
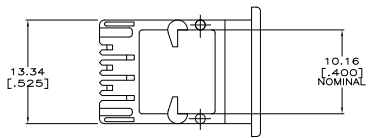
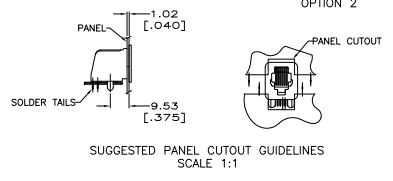
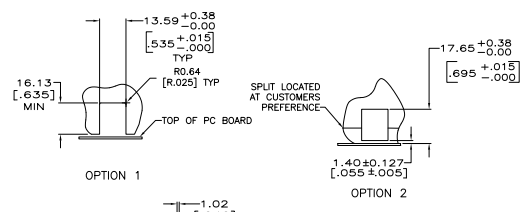
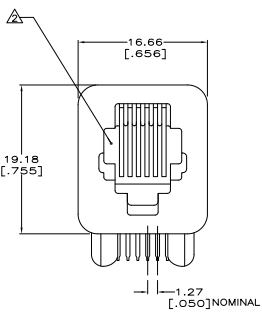
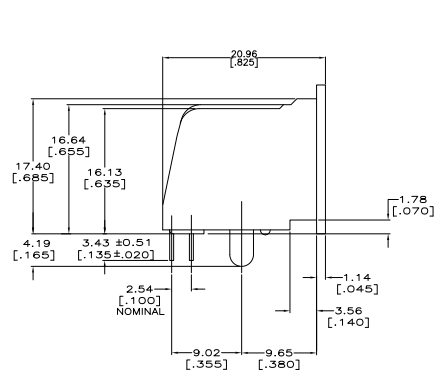
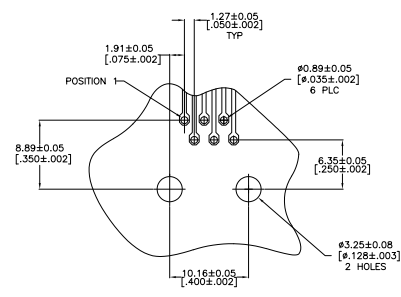


THIS DRAWING IS UNPUBLISHED. ALL RIGHTS RESERVED.
 © 2008 BY TDS ELECTRONICS CORPORATION

REV	DATE	DESCRIPTION	BY	APP'D
00				
01		REVISED FOR ECO-02-01246		



RECOMMENDED PRINTED CIRCUIT BOARD LAYOUT FOR FOUR CONTACTS COMPONENT SIDE



RECOMMENDED PRINTED CIRCUIT BOARD LAYOUT FOR SIX CONTACTS COMPONENT SIDE

- △ MATERIAL:
HOUSING - PBT POLYESTER, BLACK.
TERMINAL - 0.35 [014] THICK PHOS BRONZE PLATED WITH 1.27µm [000050] MINIMUM THICK HARD GOLD IN LOCALIZED GOLD PLATE AREA AND 3.81µm [000150] THICK MATTE TIN IN SOLDER AREA OVER 1.27µm [000050] MINIMUM THICK NICKEL UNDERPLATE.
- △ CAVITY CONFORMS TO FCC RULES AND REGULATION PART 68 AND REA BULLETIN 345-81, PE-76 SPECIFICATION FOR MODULAR TELEPHONE HARDWARE.
- △ ALL DIMENSION ARE MAXIMUM UNLESS OTHERWISE SPECIFIED.

6	5520242-3
4	5520242-2
	CONTACTS PART NO.

THIS DRAWING IS A CONTROLLED DOCUMENT.		REVISED FOR ECO-02-01246	DATE	BY	APP'D
INCHES	MILLIMETERS	108-1163			
1/16	1.588	114-2048			
1/32	3.175				
1/64	6.350				
3/128	12.700				
1/8	31.750				
1/4	63.500				
3/8	95.250				
1/2	127.000				
3/4	190.500				
1	254.000				
1 1/4	317.500				
1 1/2	381.000				
1 3/4	444.500				
2	508.000				
2 1/4	571.500				
2 1/2	635.000				
2 3/4	698.500				
3	762.000				
3 1/4	825.500				
3 1/2	889.000				
3 3/4	952.500				
4	1016.000				
4 1/4	1079.500				
4 1/2	1143.000				
4 3/4	1206.500				
5	1270.000				
5 1/4	1333.500				
5 1/2	1397.000				
5 3/4	1460.500				
6	1524.000				
6 1/4	1587.500				
6 1/2	1651.000				
6 3/4	1714.500				
7	1778.000				
7 1/4	1841.500				
7 1/2	1905.000				
7 3/4	1968.500				
8	2032.000				
8 1/4	2095.500				
8 1/2	2159.000				
8 3/4	2222.500				
9	2286.000				
9 1/4	2349.500				
9 1/2	2413.000				
9 3/4	2476.500				
10	2540.000				
10 1/4	2603.500				
10 1/2	2667.000				
10 3/4	2730.500				
11	2794.000				
11 1/4	2857.500				
11 1/2	2921.000				
11 3/4	2984.500				
12	3048.000				
12 1/4	3111.500				
12 1/2	3175.000				
12 3/4	3238.500				
13	3302.000				
13 1/4	3365.500				
13 1/2	3429.000				
13 3/4	3492.500				
14	3556.000				
14 1/4	3619.500				
14 1/2	3683.000				
14 3/4	3746.500				
15	3810.000				
15 1/4	3873.500				
15 1/2	3937.000				
15 3/4	4000.500				
16	4064.000				
16 1/4	4127.500				
16 1/2	4191.000				
16 3/4	4254.500				
17	4318.000				
17 1/4	4381.500				
17 1/2	4445.000				
17 3/4	4508.500				
18	4572.000				
18 1/4	4635.500				
18 1/2	4699.000				
18 3/4	4762.500				
19	4826.000				
19 1/4	4889.500				
19 1/2	4953.000				
19 3/4	5016.500				
20	5080.000				
20 1/4	5143.500				
20 1/2	5207.000				
20 3/4	5270.500				
21	5334.000				
21 1/4	5397.500				
21 1/2	5461.000				
21 3/4	5524.500				
22	5588.000				
22 1/4	5651.500				
22 1/2	5715.000				
22 3/4	5778.500				
23	5842.000				
23 1/4	5905.500				
23 1/2	5969.000				
23 3/4	6032.500				
24	6096.000				
24 1/4	6159.500				
24 1/2	6223.000				
24 3/4	6286.500				
25	6350.000				
25 1/4	6413.500				
25 1/2	6477.000				
25 3/4	6540.500				
26	6604.000				
26 1/4	6667.500				
26 1/2	6731.000				
26 3/4	6794.500				
27	6858.000				
27 1/4	6921.500				
27 1/2	6985.000				
27 3/4	7048.500				
28	7112.000				
28 1/4	7175.500				
28 1/2	7239.000				
28 3/4	7302.500				
29	7366.000				
29 1/4	7429.500				
29 1/2	7493.000				
29 3/4	7556.500				
30	7620.000				
30 1/4	7683.500				
30 1/2	7747.000				
30 3/4	7810.500				
31	7874.000				
31 1/4	7937.500				
31 1/2	8001.000				
31 3/4	8064.500				
32	8128.000				
32 1/4	8191.500				
32 1/2	8255.000				
32 3/4	8318.500				
33	8382.000				
33 1/4	8445.500				
33 1/2	8509.000				
33 3/4	8572.500				
34	8636.000				
34 1/4	8699.500				
34 1/2	8763.000				
34 3/4	8826.500				
35	8890.000				
35 1/4	8953.500				
35 1/2	9017.000				
35 3/4	9080.500				
36	9144.000				
36 1/4	9207.500				
36 1/2	9271.000				
36 3/4	9334.500				
37	9398.000				
37 1/4	9461.500				
37 1/2	9525.000				
37 3/4	9588.500				
38	9652.000				
38 1/4	9715.500				
38 1/2	9779.000				
38 3/4	9842.500				
39	9906.000				
39 1/4	9969.500				
39 1/2	10033.000				
39 3/4	10096.500				
40	10160.000				

WJ 480 REV 2/2008