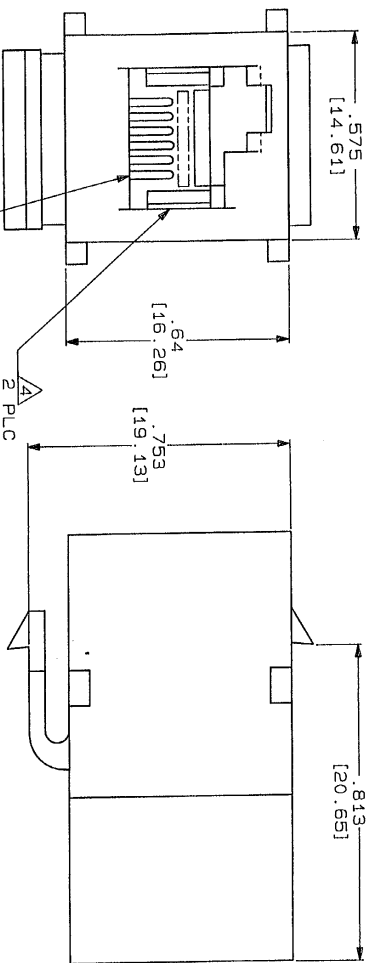
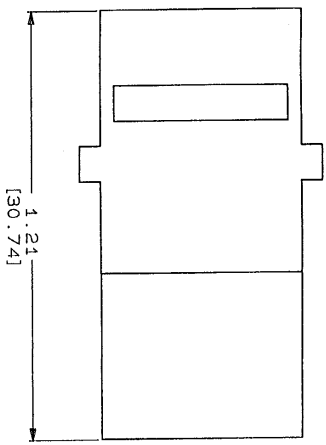
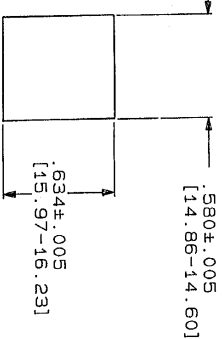
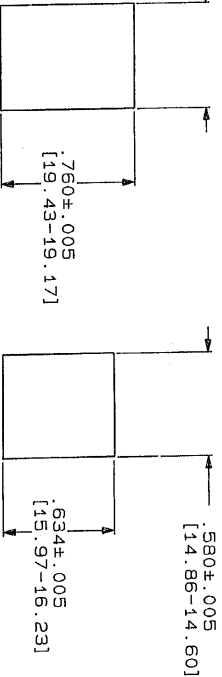


LOC	QST	REV	DESCRIPTION	DATE	APPD
AA	28	P	RELEASED FOR PUBLICATION	11/6/89	JM
		F	ZONE		
		LTR	0		
		PLSD	NPR C89-134		



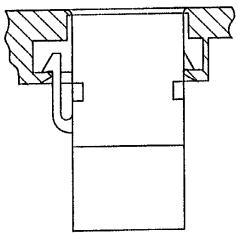
RECOMMENDED PANEL CUTOUT FOR SINGLE WALL PLATE AND BACK PANEL FOR DOUBLE WALL PLATE

RECOMMENDED FRONT PANEL CUTOUT FOR DOUBLE WALL PLATE

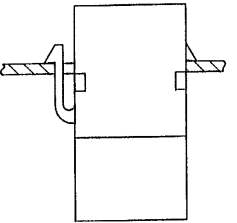


- ALL DIMENSIONS SHOWN ARE MAXIMUM UNLESS OTHERWISE SPECIFIED.
- MATERIAL: HOUSING- POLYPHENYLENE OXIDE, BLACK. TERMINAL-Ø .018 [0.46] PHOSPHOR BRONZE PLATED WITH .000050 [1.27µM] MINIMUM THICK GOLD OVER .000050 [1.27µM] MINIMUM THICK NICKEL.
- MOUNTING PANEL THICKNESS .062 [1.58] NOMINAL.

CAVITIES SHALL CONFORM TO FCC RULES AND REGULATIONS, PART 68, SUBPART F.



DOUBLE WALL PLATE NOT TO SCALE



SINGLE WALL PLATE NOT TO SCALE

DO NOT SCALE PRINT. UNLESS SPECIFIED DIMENSIONS IN INCHES (MM) TOLERANCES ON: 2 PLC DEC ± .005 3 PLC DEC ± .005 ANGLES MATERIAL

FINISH

DR	11/16/89	DR	556625-1
CHK	J. K. Williams	AMP	AMP INCORPORATED
APPD	2-10-90	HERTSBURG, Pa. 17105	
APPD	3-12-92		
PRODUCT SPEC			
APPLICATION SPEC			
WEIGHT			
SIZE	FSCM NO	DRAWING NO	
C	00779	556625	
SCALE	4: 1	SHEET	1 OF 1

CAD CUSTOMER DRAWING

556625