

4

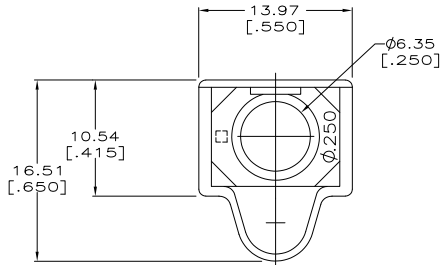
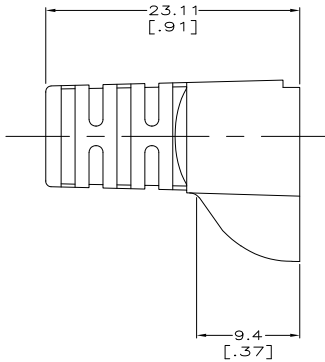
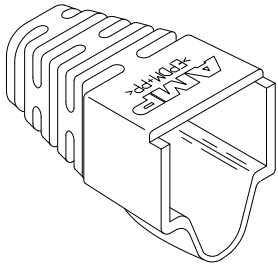
3

2

1

THIS DRAWING IS UNPUBLISHED. RELEASED FOR PUBLICATION
 © COPYRIGHT - By - ALL RIGHTS RESERVED.

LOC	DIST	REVISIONS			
F	LNK	DESCRIPTION	DATE	BY	APP'D
AA	28	A1	REVISED PER ECO-11-005033	22MAR11	RK HMR



- 1. MATERIAL: ELASTOMER POLYOLEFIN, SEE TABLE FOR COLOR.
- 2. DIMENSIONS ARE NOMINAL UNLESS OTHERWISE SPECIFIED.
- 3. BOOT DESIGNED TO FIT CABLE DIAMETER OF .250 NOMINAL, AMP SHIELDED MODULAR PLUGS AND EXTERNAL STRAIN RELIEF 558527-3.

NEMA GY	1-569877-0
VIOLET	569877-9
WHITE	569877-8
ORANGE	569877-7
YELLOW	569877-6
BLUE	569877-5
GREEN	569877-4
RED	569877-3
LT ALMOND	569877-2
BLACK	569877-1
COLOR	PART NUMBER

THIS DRAWING IS A CONTROLLED DOCUMENT.

DRW: DL DRUMMOND 22 FEB 98	CHK: D AHERON 07 MAR 98	NAME: B. ANTHONY	PRODUCT SPEC: -	APPLICATION SPEC: -	SIZE: A2	CAGE CODE: 00779	DRAWING NO: C-569877	RESTRICTED TO: -	
DIMENSIONS: mm [INCHES]		TOLERANCES UNLESS OTHERWISE SPECIFIED:		MATERIAL:		FINISH: -			
0 PLC	±	1 PLC	±	2 PLC	±	3 PLC	±	4 PLC	±
ANGLES		±		±		±		±	

CUSTOMER DRAWING SCALE: 4:1 SHEET: 1 of 1 REV: A1

1471-9 (3/11)

569877

A