

4

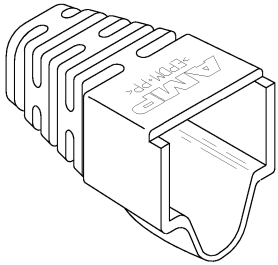
3

2

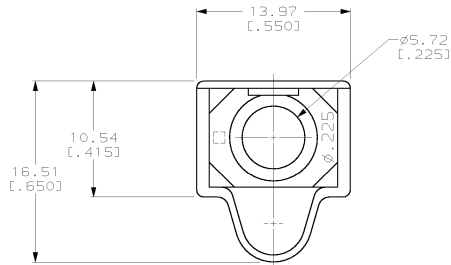
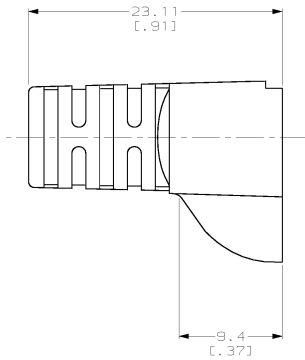
1

THIS DRAWING IS UNPUBLISHED. RELEASED FOR PUBLICATION  
 (C) COPYRIGHT IS BY AMP INCORPORATED. ALL RIGHTS RESERVED.

LOC	QTY	REVISIONS			
		REV	DESCRIPTION	DATE	BY
AA	28	B	REVISED; EC 001C-0095-99	02NOV99	DLJ/ECL



- ⚠ MATERIAL: ELASTOMER POLYOLEFIN, SEE TABLE FOR COLOR.
- ⚠ DIMENSIONS ARE NOMINAL UNLESS OTHERWISE SPECIFIED.
- 3. BOOT DESIGNED TO FIT CABLE DIAMETER OF .225 NOMINAL, AMP SHIELDED MODULAR PLUGS AND EXTERNAL STRAIN RELIEF 558527-3.



NEMA GY	1-569876-0
VIOLET	569876-9
WHITE	569876-8
ORANGE	569876-7
YELLOW	569876-6
BLUE	569876-5
GREEN	569876-4
RED	569876-3
LT ALMOND	569876-2
BLACK	569876-1
COLOR	PART NUMBER

<small>DO NOT SCALE DIMENSIONS FROM THIS DRAWING. DIMENSIONS SHALL BE TAKEN FROM THE OBJECT UNLESS OTHERWISE SPECIFIED.</small>		DWG. DILLI DREW/HOOND 02 FEB 98 CDR. J. AHERON 07 MAR 98 PRT. B. ANTHONY 07 MAR 98 NAME: AMP Incorporated Harrisburg, PA 17105-3608
DIMENSIONS: mm (INCHES) TOLERANCES: mm (INCHES) FINISH:	DIMENSIONS: mm (INCHES) TOLERANCES: mm (INCHES) FINISH:	AMP <b>BOOT, HOODED, Ø.225</b> SIZE: A2 CASE CODE: 00779 DRAWING NO: C-569876 SCALE: 4:1 SHEET 1 OF 1 REV B
MATERIAL: FINISH:		APPLICATION SPEC: WEIGHT: CUSTOMER DRAWING

569876