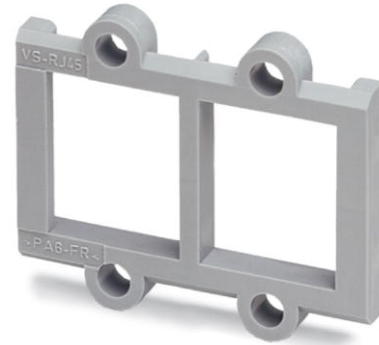


# VS-08-A-RJ45/LP-2-IP 20

Order No.: 1688654



<http://eshop.phoenixcontact.de/phoenix/treeViewClick.do?UID=1688654>


RJ45 panel mounting frame, 2x, IP20, for socket inserts for PCB connection, without mounting screws

## Ethernet

Commercial data	
EAN	4017918819422
Pack	5 pcs.
Customs tariff	85389099
Weight/Piece	0.00154 KG
Catalog page information	Page 169 (PC-2007)

**Product notes**

WEEE/RoHS-compliant since: 12/15/2005



<http://www.download.phoenixcontact.com>  
Please note that the data given here has been taken from the online catalog. For comprehensive information and data, please refer to the user documentation. The General Terms and Conditions of Use apply to Internet downloads.

## Technical data

Mechanical characteristics	
Number of slots	2
Color	gray
Ambient temperature (operation)	-40 °C ... 80 °C

**Material data**

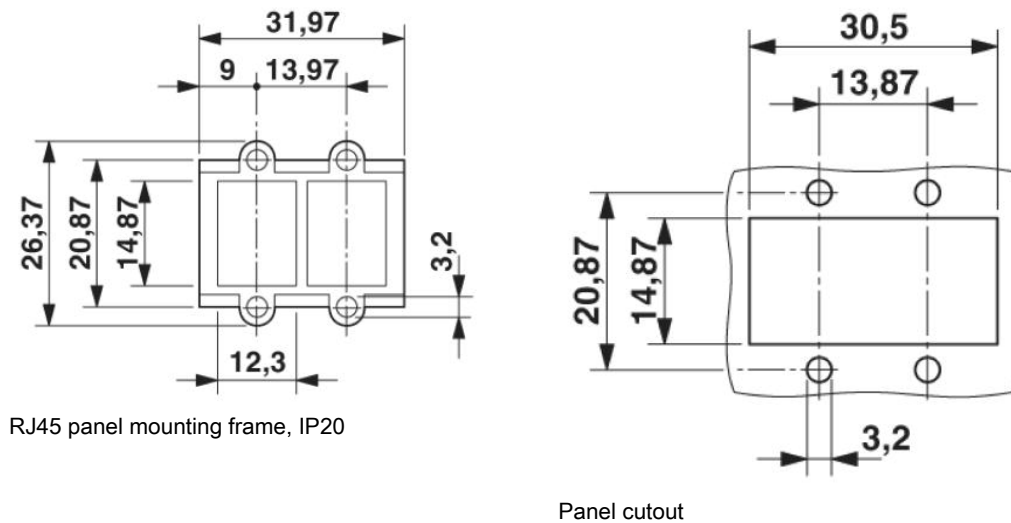
Inflammability class acc. to UL 94	V0
Housing material	PA
Material	Plastic
Degree of protection	IP20

**Accessories**

Item	Designation	Description
<b>Female insert</b>		
1688599	VS-08-BU-RJ45/LP-2	RJ45 socket insert, 2x, for PCB assembly, CAT5e, 8-pos., shielded, with angled solder pins

**Diagrams/Drawings**

Dimensioned drawing



**Address**

PHOENIX CONTACT Deutschland GmbH  
Flachsmarktstr. 8  
32825 Blomberg, Germany  
Phone +49 5235 3 12000  
Fax +49 5235 3 41200  
<http://www.phoenixcontact.de>



© 2010 Phoenix Contact  
Technical modifications reserved;