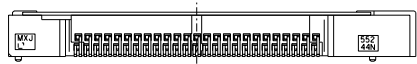
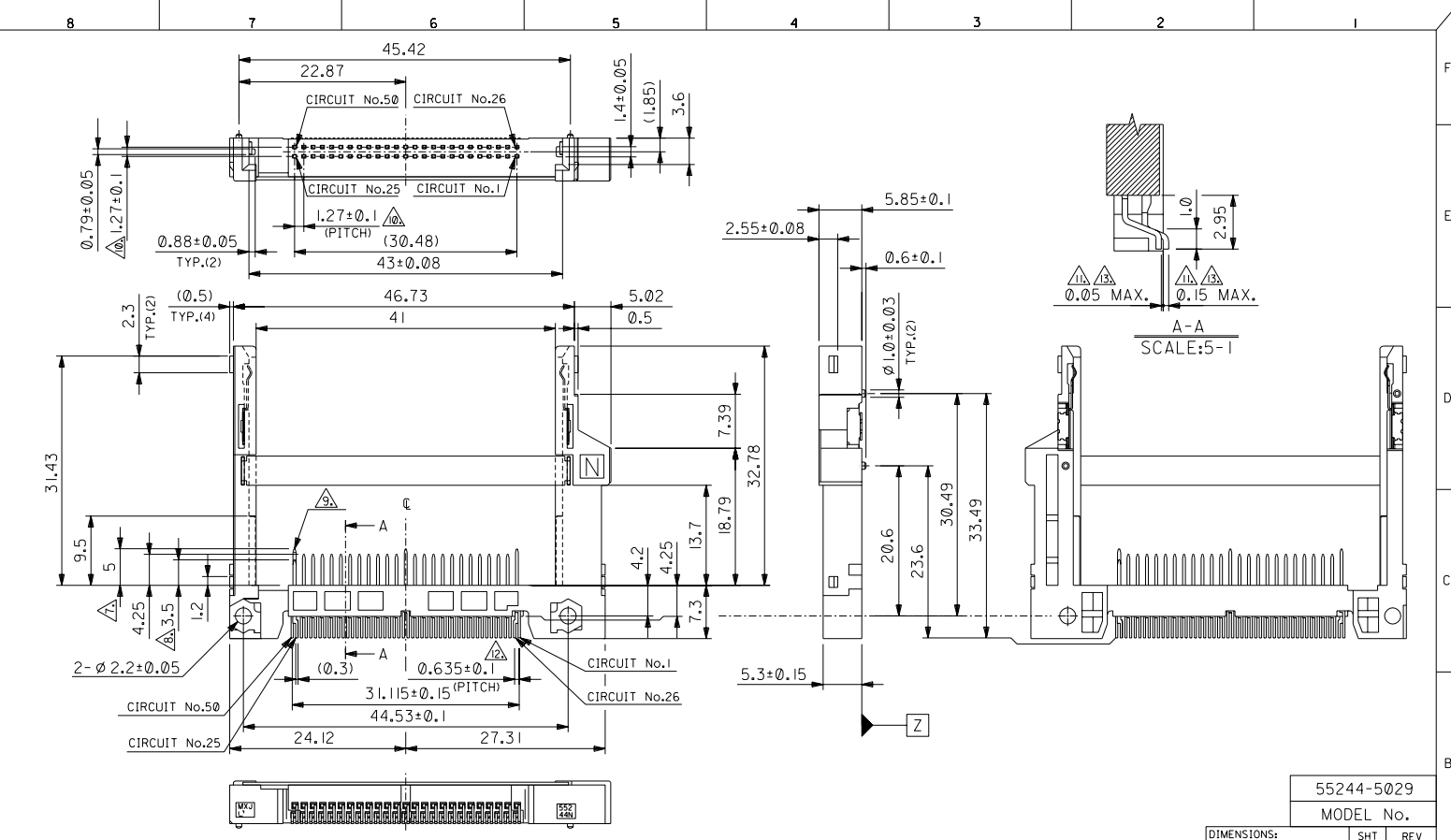


DWG. NO.
SD-55244-009

DO NOT SCALE DRAWING



EC NO. DRWN: CHK: APPR:		EC NO. DRWN: CHK: APPR:		EC NO. DRWN: CHK: APPR:		EC NO. DRWN: CHK: APPR:		EC NO. DRWN: CHK: APPR:		RELEASED 04/03/18 EC NO. J2004-3185 DRWN: T.UENO CHK: M.SASAO APPR: M.SASAO		MATERIAL 材料 SEE NOTES		GENERAL TOLERANCES: (UNLESS SPECIFIED) 一般公差		SCALE 比例		DESIGN UNITS 设计单位 <input checked="" type="checkbox"/> mm <input type="checkbox"/> INCH		THIRD ANGLE PROJECTION <input type="checkbox"/> mm <input type="checkbox"/> INCH <input checked="" type="checkbox"/> mm ONLY		SHT REV REVISE ON CAD ONLY	
										FINISH 仕上付 SEE NOTES		10 UNDER 未満 +0.2		DRAWN BY & DATE T.UENO 04/03/18		TITLE: CF CARD CONN. 50P HEADER ASS'Y (NORMAL TYPE) -LEAD FREE-							
										WIRE RANGE 適用電線範囲 #		10 OVER 以上 +0.25		CHECKED BY & DATE M.SASAO 04/03/18		MOLEX INCORPORATED							
										INS. RANGE 被覆外径 #		30 OVER 以上 +0.3		APPROVED BY & DATE M.SASAO 04/03/18		CAD FILENAME SD-55244-009.S01		MATERIAL NO. 55244-5029		DRAWING NO. SD-55244-009		SHEET NO. 1 OF 2	
												ANGLE 角度 +3°		THIS DRAWING CONTAINS INFORMATION THAT IS PROPRIETARY TO MOLEX INCORPORATED AND SHOULD NOT BE USED WITHOUT WRITTEN PERMISSION.		SIZE B				EN-02J(097) MXJ-54			

DWG. NO. SD-55244-009

注) NOTES

1. 材質 MATERIAL
 ハウジング: ガラス入り耐熱樹脂 UL94V-0
 HOUSING: LIQUID CRYSTAL POLYMER GLASS FILLED UL94V-0
 ピン: リン青銅
 PIN: PHOSPHOR BRONZE
 ネール: リン青銅
 NAIL: PHOSPHOR BRONZE

2. ヌッキ仕様 PLATING

接点部 CONTACT AREA	金めつき GOLD PLATING
半田付け部 SOLDER TAIL AREA	錫めつき TIN PLATING
下地めつき UNDERPLATING	ニッケルめつき NICKEL PLATING
接点部 CONTACT AREA	金めつき GOLD PLATING
半田付け部 SOLDER TAIL AREA	錫めつき TIN PLATING
下地めつき UNDERPLATING	ニッケルめつき NICKEL PLATING

3. 推奨基板厚 : t0.8 MIN.
 RECOMMENDED P.C.B. THICKNESS: t0.8 MIN.

4. 適合カード厚 : 3.3±0.1 (TYPE I) AND 5 MAX. (TYPE II)
 RECOMMENDED CARD THICKNESS: 3.3±0.1 (TYPE I) AND 5 MAX. (TYPE II)

5. 適合カード幅 : 42.8±0.1
 RECOMMENDED CARD WIDTH: 42.8±0.1

6. ハウジング色: 黒
 HOUSING COLOR: BLACK

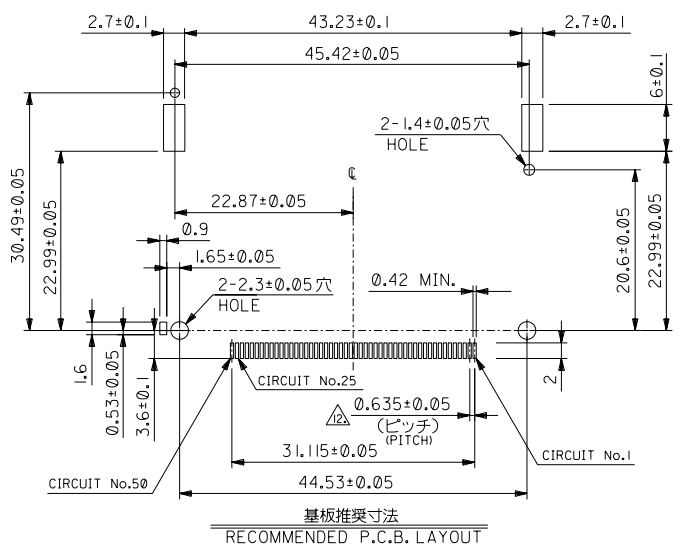
△寸法適用種: 1,13,38,50
 THIS DIMENSION APPLIES TO CIRCUIT NUMBERS 1,13,38 AND 50.

△寸法適用種: 25,26
 THIS DIMENSION APPLIES TO CIRCUIT NUMBERS 25 AND 26.

△の倒れは、ピン根元を基準に全方向へ0.1 MAX.とする。
 PIN TIP LEAN TOWARD ANY DIRECTION NOT TO EXCEED 0.1 WHEN MEASURED FROM PIN BASE.

△ピン根元に適用する。
 THIS DIMENSION TO BE MEASURED AT PIN BASE.

△ソルダータール及びネールは、Z面を基準とし上へ0.05下へ0.15の範囲にあり、且つソルダータールの平坦度は、0.12 MAX. とし、テール先端にて測定する。
 SOLDER TAILS AND FITTING NAILS TO BE WITHIN 0.05 UPWARD AND 0.15 DOWNWARD FROM Z-DATUM PLACE, AND COPLANARITY OF SOLDER TAILS TO BE WITHIN 0.12. MEASUREMENT POINT IS SOLDER TAILS TIP.



- △公差非累積 NON-CUMULATIVE
- △テールとネールを併せた平坦度は0.12 MAX.とする。
 TOTAL COPLANARITY OF SOLDER TAILS AND FITTING NAILS TO BE 0.12 MAX.
- △ボタンストロークが(6mm)の時、カード飛び出し量は(3.25mm)。
 WHEN BUTTON PUSH STROKE IS (6mm), CARD OUT BY (3.25mm).
15. 適合 SHELL ASS'Y : 55246-001* , 58773-0010
 APPLICABLE SHELL ASS'Y : 55246-001* , 58773-0010
16. 本製品は 55244-5021 の鉛フリー品である。
 THIS PRODUCT IS LEAD FREE OF 55244-5021.

DO NOT SCALE DRAWING		EC NO. DRWN: CH'K: APPR:		EC NO. DRWN: CH'K: APPR:		EC NO. DRWN: CH'K: APPR:		EC NO. DRWN: CH'K: APPR:		EC NO. DRWN: CH'K: APPR:		SEE SHEET 1 OF 2		MATERIAL 材料 SEE NOTES		GENERAL TOLERANCES: (UNLESS SPECIFIED) 一般公差		SCALE 1:1		DESIGN UNITS mm INCH		THIRD ANGLE PROJECTION		SHT 2		REV	
														FINISH 仕上げ SEE NOTES		10 UNDER 未満 +0.2		DRAWN BY & DATE T.JUNO '04/03/18		TITLE: CF CARD CONN. 50P HEADER ASS'Y (NORMAL TYPE) -LEAD FREE-		MATERIAL NO. 55244-5029		DRAWING NO. SD-55244-009		SHEET NO. 2	
														WIRE RANGE 適用電線範囲 #		10 OVER 30 UNDER 未満 +0.25		CHECKED BY & DATE M.SASAO '04/03/18		MOLEX INCORPORATED		CAD FILENAME SD-55244-009.S02					
														INS. RANGE 被覆外径 #		30 OVER 以上 +0.3		APPROVED BY & DATE M.SASAO '04/03/18				THIS DRAWING CONTAINS INFORMATION THAT IS PROPRIETARY TO MOLEX INCORPORATED AND SHOULD NOT BE USED WITHOUT WRITTEN PERMISSION.		SIZE B			
																										EN-02J(097) MXJ-54	