

**NEW**



microSD™ Small Memory Card Connector

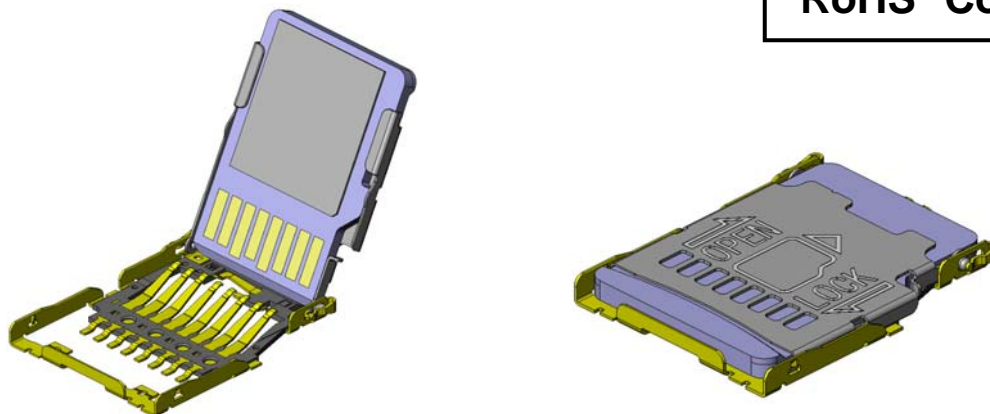
CONNECTOR

# ST1- G / K Series

MB-0195-2

December 2009

**RoHS Compliant**



The ST1 Series is a one-piece type connector for microSD™ memory cards. It is a low-profile, high-density, SMT mounted connector which is compatible with the microSD™ card used in a variety of portable devices and standardized by the SDA ( SD Card Association).

\* microSD™ is a trademark of SD Card Association.

## Features

- Push-slide, hinge type connector for microSD™ small memory card.
- Available with card insertion detection switch (K type), and without (G type).
- Shield feature is secured by 4 ground connection points on hinge cover.
- Slim design with 1.4mm height, 15.5mm depth, 11.9mm width.
- Lock structure to prevent the cover from opening when dropped.

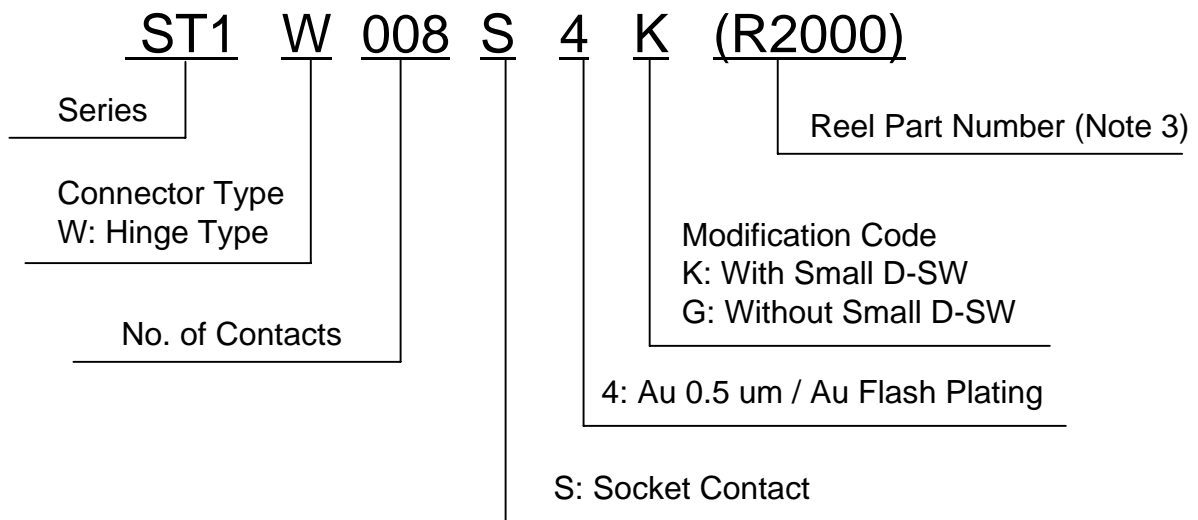
## General Specifications

- |  |  |
|--|--|
| ■ No. of Contacts: 8 pos.                                      | ■ Rated Current: 0.5A per pin            |
| ■ Contact Resistance: 100m ohm max.                            | ■ Rated Voltage: 10V per pin             |
| ■ Dielectric Withstanding Voltage :<br>AC500Vr.m.s. per minute | ■ Insulation Resistance: 1,000M ohm min. |
| ■ Operating Temperature:<br>-25 Deg. C to +85 Deg. C           | ■ Lifetime: 10,000 insertions            |
| ■ Storage Temperature:<br>-10 Deg. C to +60 Deg. C             | ■ Temperature Rise: 30 Deg. C rise max.  |

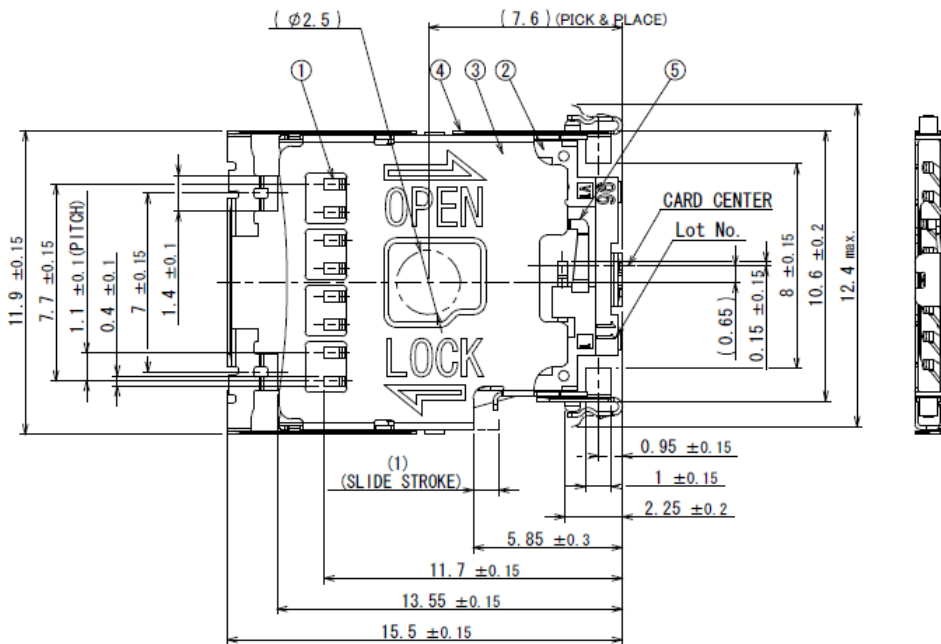
Materials and Finishes

Component	Material / Finish
Contact	Copper alloy / Contact area: 0.5um min. Au plating over Ni Terminal area: Au flash plating over Ni
Housing	Synthetic resin / No (UL94V-0)
Cover	Stainless steel / No (Terminal area: compliant with contact)

Ordering Information



Part Number	SJ Drawing
ST1W008S4K	SJ110368



Unit: mm

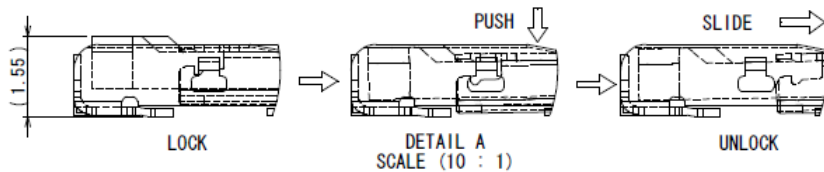
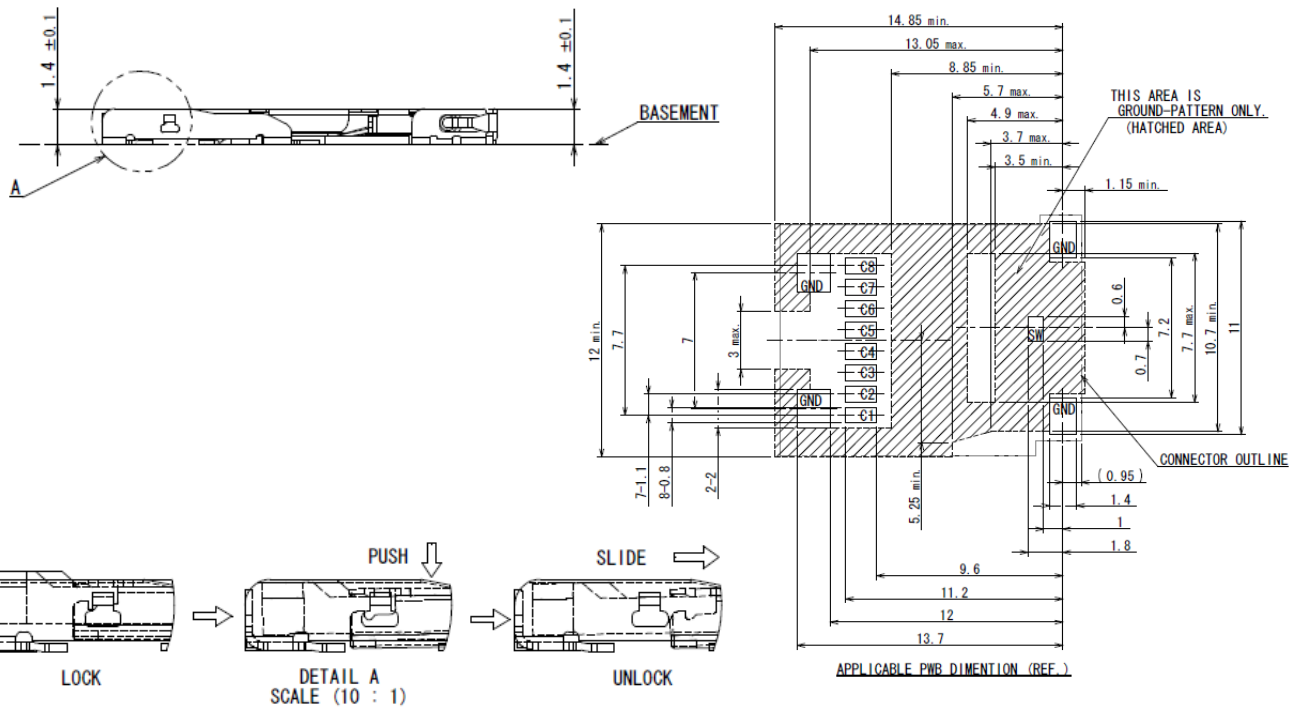
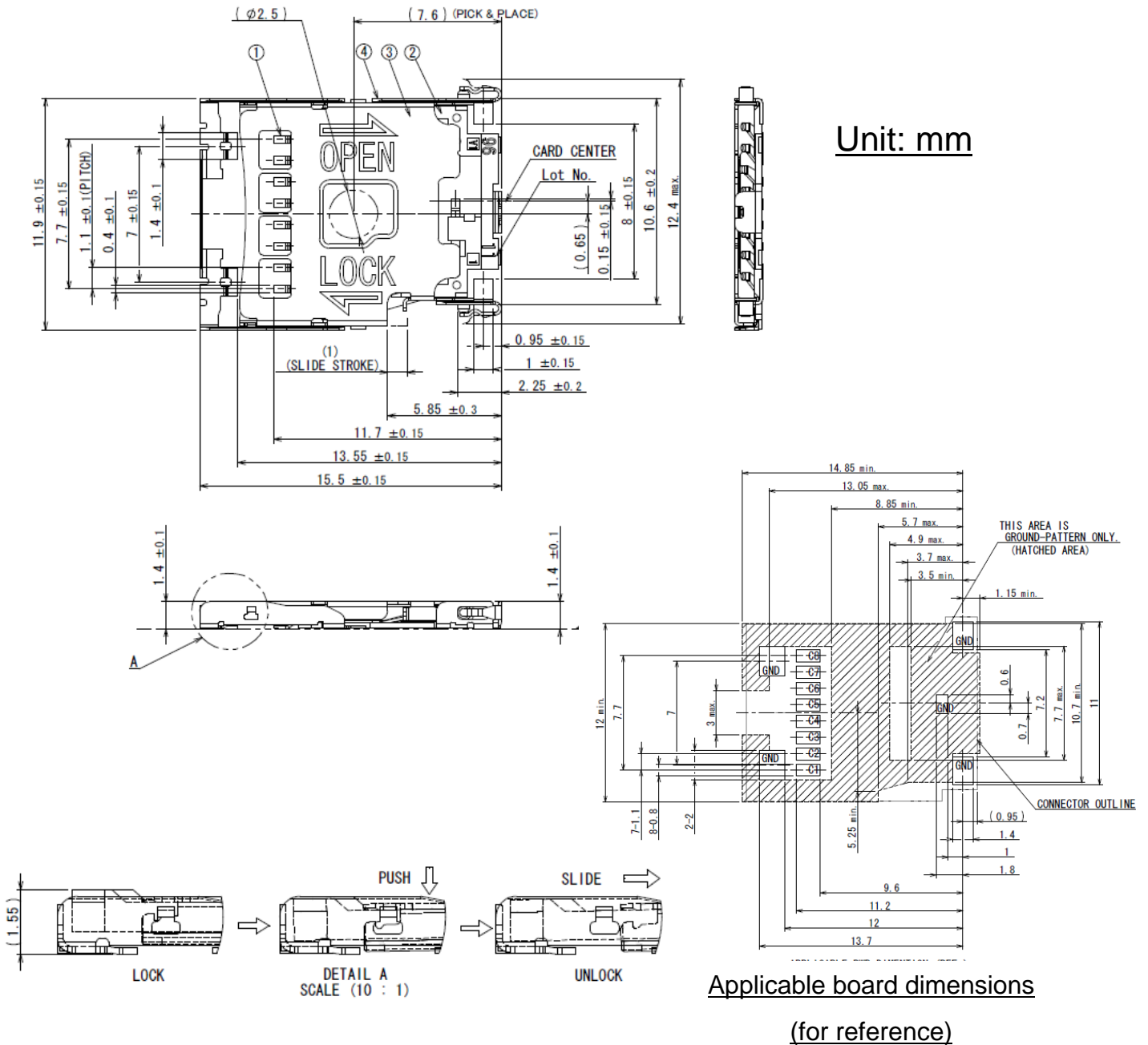


TABLE 2 Circuit

	WITHOUT CARD	WITH CARD
DETECTION SWITCH		

Part Number	SJ Drawing
ST1W008S4G	SJ109285



Note 3: An embossed tape reel contains 2,000 pcs.  
 Please contact us for details on embossed tape specifications.

**Japan Aviation Electronics Industry, Limited**

Product Marketing Division  
 Aobadai Building, 3-1-19, Aobadai, Meguro-ku, Tokyo 153-8539  
 Phone: +81-3-3780-2787 FAX: +81-3-3780-2946

**Notice:** Products shown in this leaflet are made for the applications listed below. However, if the above-mentioned products are to be used in aerospace devices, marine cable-connection devices, atomic power control systems, medical equipment for life-support systems, or any other specific application requiring extremely high reliability, please contact JAE for further information.  
 Recommended applications: computers, office machines, measuring devices, telecommunication devices (terminals, mobile devices), AV devices, household applications, FA devices, etc.