

- △ 0.00076[.000030] MINIMUM GOLD IN CONTACT AREA, 0.00381[.000150] MIN TIN-LEAD ON SOLDER TAILS, ALL OVER 0.00127[.000050] MINIMUM NICKEL
- △ DATUMS AND BASIC DIMENSIONS ESTABLISHED BY CUSTOMER
- 3. CONNECTOR REQUIRES USE OF 4 - SIZE 2M SCREWS FOR FASTENING TO PRINTED CIRCUIT BOARD
- △ RECESSED AMP AND CSA LOGOS LOCATED ON BOTH SIDES OF HOUSING.

REV	DATE	BY	CHK	APP	DESCRIPTION	DATE	APP
AD	00			B	SEE SHEET ONE	-	-

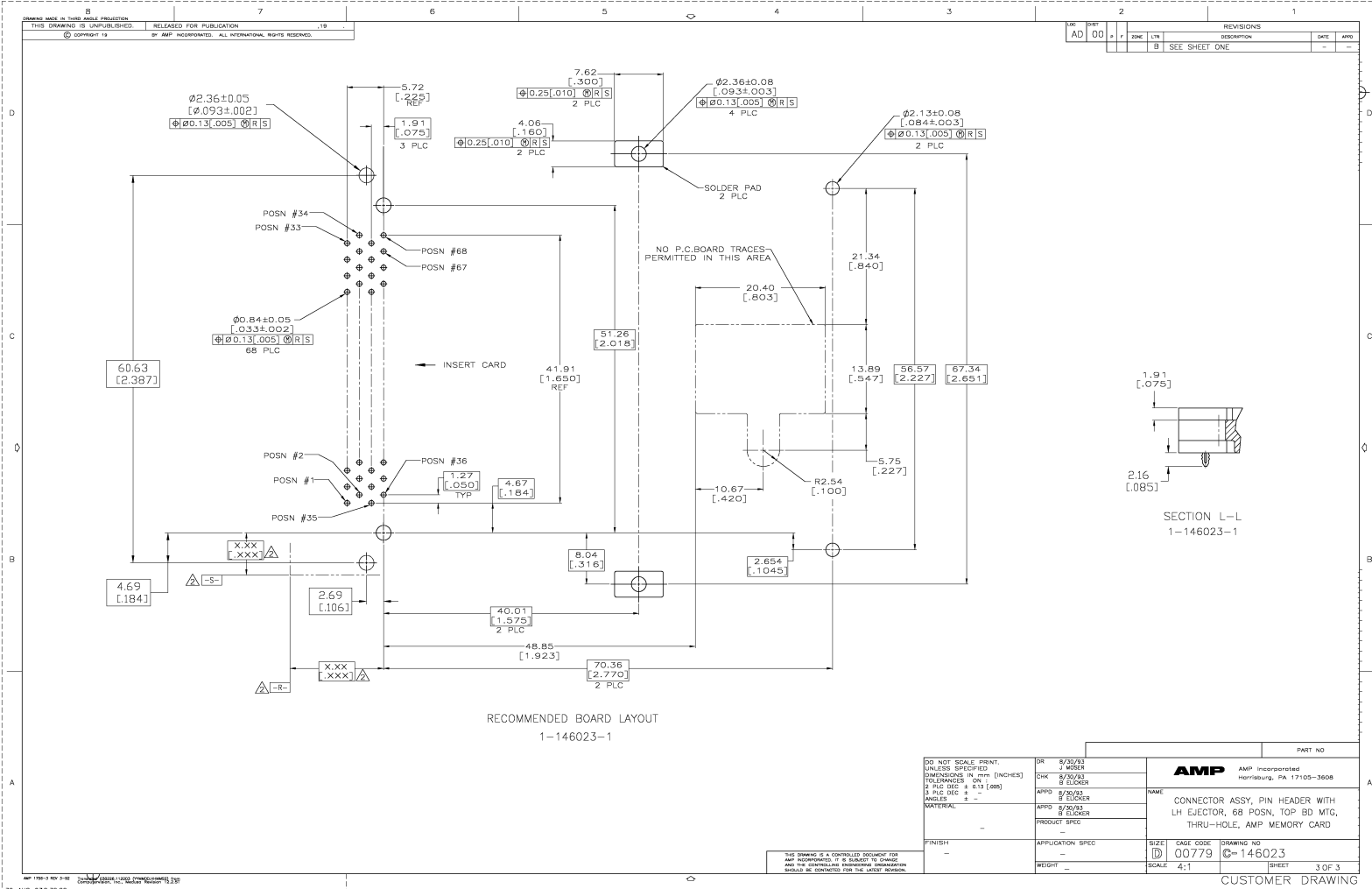
RECOMMENDED BOARD LAYOUT
146023-1

DO NOT SCALE PRINT, UNLESS SPECIFIED		DR	8/20/93	AMP Incorporated	
DIMENSIONS IN mm [INCHES]		CHK	8/20/93	Harrisburg, PA 17105-3608	
TOLERANCES: 2 PLD DEC ± 0.13 [0.05]		APPD	8/20/93	NAME	
3 PLD DEC ± -		APPD	8/20/93	CONNECTOR ASSY, PIN HEADER WITH	
ANGLES ± -		PRODUCT SPEC	-	LH EJECTOR, 68 POSN, TOP BD MTG,	
MATERIAL		FINISH	-	THRU-HOLE, AMP MEMORY CARD	
-		APPLICATION SPEC	-	SIZE	CAGE CODE
-		WEIGHT	-	D	00779
-				SCALE	4:1
-				DRAWING NO	146023
-				SHEET	2 OF 3

THIS DRAWING IS A CONTROLLED DOCUMENT FOR AMP AND IS SUBJECT TO A REVISION PROGRAM. THE USER SHOULD BE CONTACTED FOR THE LATEST REVISION.

CUSTOMER DRAWING

AMP 1781-1 Rev 01-92
30-AUG-93 02:00:02 29718



RECOMMENDED BOARD LAYOUT
1-146023-1

SECTION L-L
1-146023-1

DO NOT SCALE PRINT, UNLESS SPECIFIED DIMENSIONS IN mm [INCHES] TOLERANCES IN: 2 PLG DEC ± 0.13 [0.05] 3 PLG DEC ± - ANGLES ± - MATERIAL -		DR 8/20/93 1 WJ/SER CHK 8/20/93 9 EL/SER APP'D 8/20/93 8 EL/SER PRODUCT SPEC - FINISH -	AMP Incorporated Harrisburg, PA 17105-3608 NAME CONNECTOR ASSY, PIN HEADER WITH LH EJECTOR, 68 POSN, TOP BD MFG, THRU-HOLE, AMP MEMORY CARD	PART NO DRAWING NO 00779 146023
THIS DRAWING IS A CONTROLLED DOCUMENT FOR AMP INCORPORATED. IF A REVISION TO THIS DRAWING AND THE CORRESPONDING PART NUMBER CHANGE SHOULD BE CONTACTED FOR THE LATEST REVISION.	APPLICATION SPEC - WEIGHT -	SIZE D SCALE 4:1	CAGE CODE 00779	DRAWING NO 146023 SHEET 3 OF 3

CUSTOMER DRAWING

AMP 1781-1 Rev 01-92
30-AUG-93 03:20:00