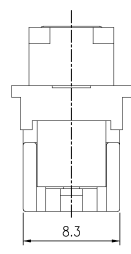
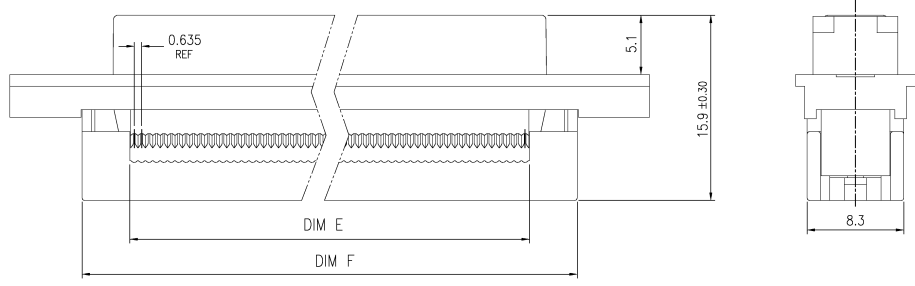
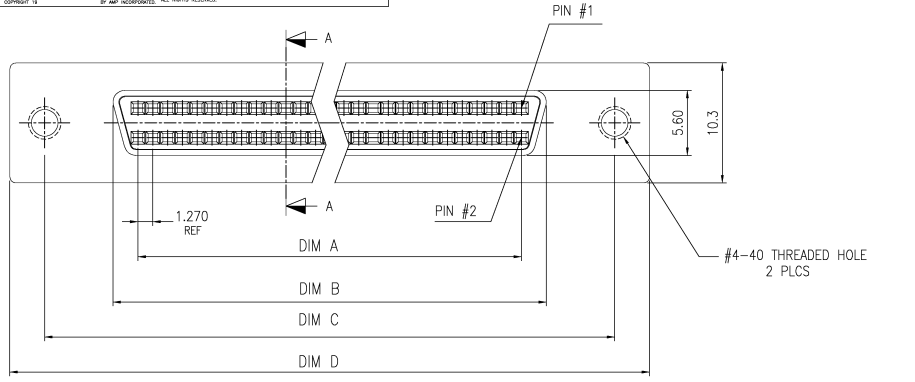
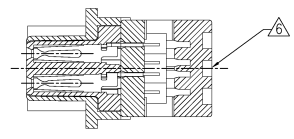


REV	DATE	DESCRIPTION	BY	CHK	APP
00					
D		REVISED PER EC DS13-0165-03	35APR03	JG	CC



- △ HOUSING: PBT, 30% GLASS REINFORCED, UL94V-0.  
CONTACTS: PHOS. BRONZE.
- △ CONTACTS: GOLD PLATED (SEE TABLE) ON MATING END, 1.27um [.000050in] MIN BRIGHT TIN-LEAD ON TERMINATION AREA, ALL OVER 1.27um [.000050in] MIN NICKEL ON ENTIRE CONTACT.
- △ BRACKET: ZINC ALLOY. PLATING: 1.27um [.000050] MIN. NICKEL.
- △ SPECIFICATIONS:  
CURRENT RATING: 1A.  
VOLTAGE RATING: 30V AC.  
INSULATION RESISTANCE: 1000 MEGOHMS MIN. AT 500V DC.  
CONTACT RESISTANCE: 55 MILLIOHMS MAX.  
DIELECTRIC WITHSTANDING VOLTAGE: 250V AC FOR 1 MINUTE.  
CONTACT RETENTION FORCE: 600 gf MIN.  
TOTAL INSERTION FORCE: 4 Kgf MAX. (FORCE DEPENDENT ON MATING CONNECTOR)  
TOTAL WITHDRAWAL FORCE: 1.5 Kgf MAX. (FORCE DEPENDENT ON MATING CONNECTOR)  
WIRE COVER RETENTION FORCE: 6 Kgf MIN.  
OPERATION TEMPERATURE: -55°C TO 85°C.
- △ FOR USE WITH 30 & 32 AWG FLAT RIBBON CABLE.  
SELECTION OF COMPATIBLE RIBBON CABLE AND APPLICATION TOOLING FOR USE WITH THIS PRODUCT IS THE RESPONSIBILITY OF THE USER.
- △ AMP LOGO LOCATED ON THIS SURFACE.
- 7. SPECIFICATIONS SUBJECT TO CHANGE WITHOUT NOTICE.  
CONTACT AMP FOR THE LATEST SPECIFICATIONS.
- △ CONTACTS: GOLD PLATED (SEE TABLE) ON MATING END, 1.27um [.000050in] MIN BRIGHT TIN ON TERMINATION AREA, ALL OVER 1.27um [.000050in] MIN NICKEL ON ENTIRE CONTACT.



SEC. A-A

51.5	43.30	63.90	57.93	46.20	41.91	TRAY	BLACK	0.76um [.000030in]	△	6-390378-7	68	
OBSOLETE	51.5	43.30	63.90	57.93	46.20	41.91	TRAY	BLACK	0.03um [.000011in]	△	2-390378-7	68
OBSOLETE	40.07	31.87	52.47	46.50	34.77	30.48	TRAY	BLACK	0.03um [.000011in]	△	2-390378-5	50
	51.5	43.30	63.90	57.93	46.20	41.91	TRAY	BLACK	0.38um [.000015in]	△	1-390378-7	68
	40.07	31.87	52.47	46.50	34.77	30.48	TRAY	BLACK	0.38um [.000015in]	△	1-390378-5	50
	51.5	43.30	63.90	57.93	46.20	41.91	TRAY	BLACK	0.76um [.000030in]	△	390378-7	68
	40.07	31.87	52.47	46.50	34.77	30.48	TRAY	BLACK	0.76um [.000030in]	△	390378-5	50
DIM F	DIM E	DIM D	DIM C	DIM B	DIM A	PACKAGING	COLOR	CONTACT FINISH		AMP PART NO.	# OF POS.	

THIS DRAWING IS A CONTROLLED DOCUMENT.

AMP INCORPORATED  
 17105-36DR

RECEPTACLE ASSEMBLY,  
 025 CENTERLINE,  
 AMPLINE 3000 SERIES

SEE: DATE SIZE DRAWING NO. RESTRICTED TO  
 A1 00779 390378

CUSTOMER DRAWING