

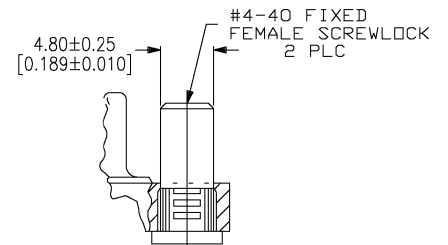
THIS DRAWING IS UNPUBLISHED.
 RELEASED FOR PUBLICATION
 BY TYCO ELECTRONICS CORPORATION. ALL RIGHTS RESERVED.

LOG		DATE		REVISIONS		
NO	BY	DATE	DESCRIPTION	DATE	BY	CHK
GP	0					
M			REVISED PER OS13-0092-02	08JULY02	JB	CC

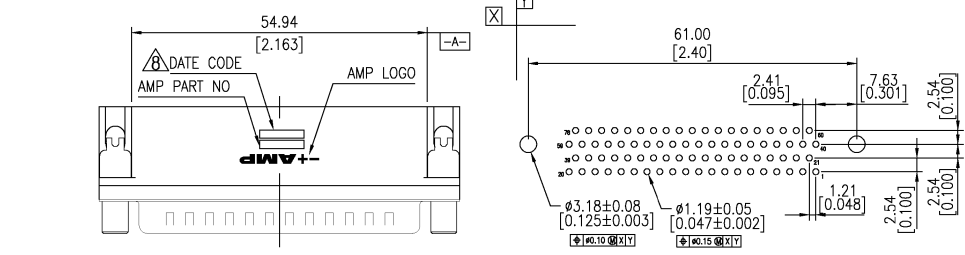
MATERIAL:

1. Housing: PBT, 30% G.F polyester, Black.
(UL 94V-0 Rated)
 2. Contact: Brass.
 3. Contact Plated: Gold Plated over 50u"
Nickel underplated.
 4. Solder Tail: Sn/Pb Plated 120u" over 50u"
Nickel underplated.
 5. Shell: Steel, Nickel Plated.
 6. Boardlock: Brass, Tin or Sn/Pb Plated 100u"
 7. Female Screwlock: Brass, Nickel plated 30u" Min.
- ⊗ Four digit date code in this format.

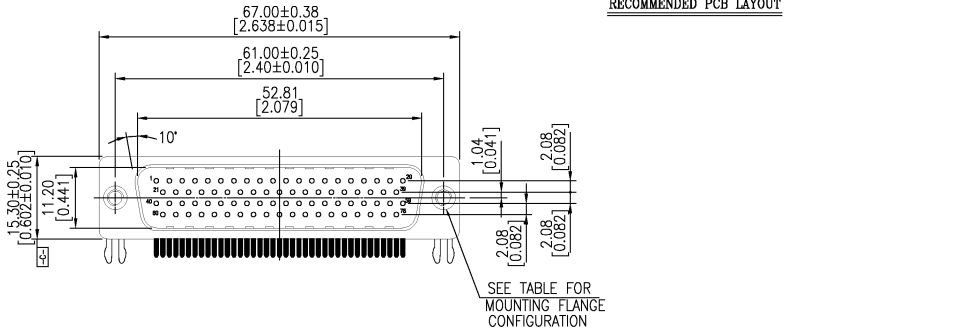
01 45
 Year Manufacturing Week



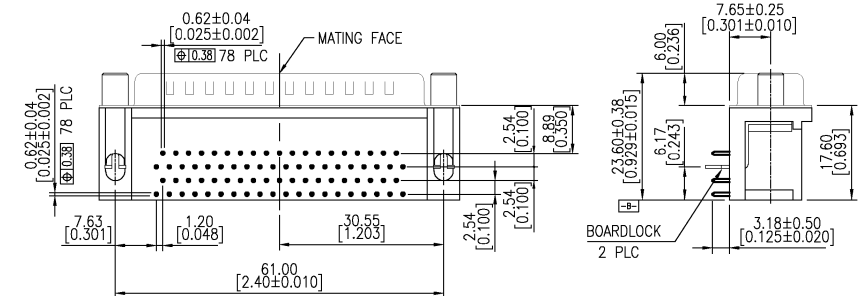
Detail A



RECOMMENDED PCB LAYOUT



SEE TABLE FOR MOUNTING FLANGE CONFIGURATION



Tray	Detail A	Gold flash	749234-4
Tray	Detail A	15 μ"	749234-3
Tray	Detail A	30 μ"	749234-1
Packaging	Mounting Flange Config	Contact Finish	AMP Part NO.

DIMENSIONS:		TO DIMENSIONS UNLESS OTHERWISE SPECIFIED:		Tyco Electronics Corporation	
MM	3 PLC	±	0.30	DATE CODE	00779
	1 PLC	±	0.30	DRAWING NO	749234
	2 PLC	±	0.10	RESTRICTED TO	
	3 PLC	±	0.10		
	4 PLC	±	0.10		
	ANGLES	±	0.7		
MATERIAL	FINISH	WEIGHT		SCALE	3:1
				SHEET	1 of 1
				REV	M

AMP 1471-9 REV 31MAR2000

749234

A