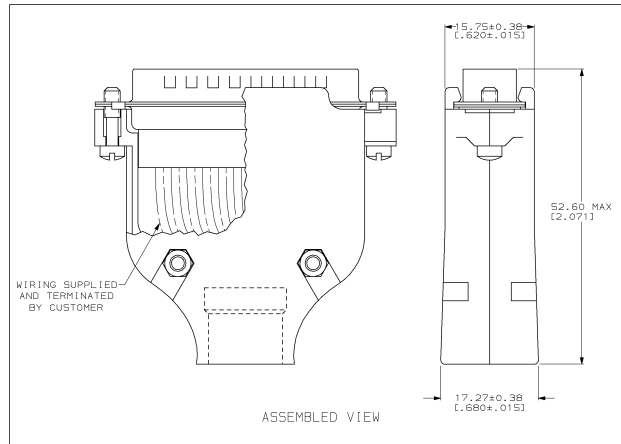
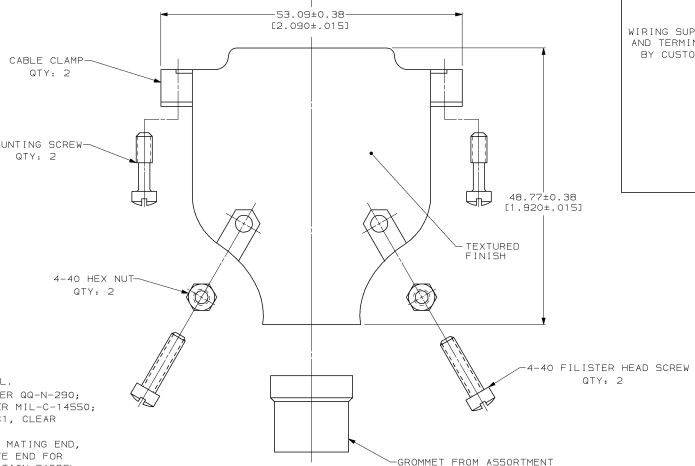
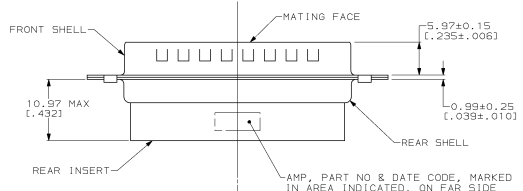
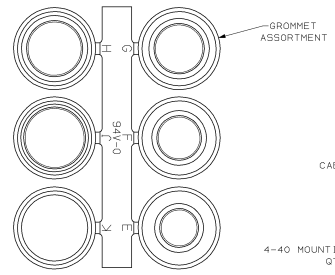
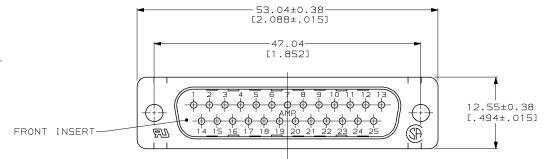
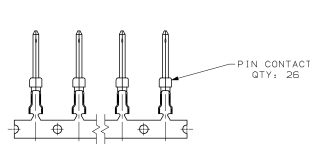


DRAWING MADE IN THIS ANGLE PROJECTION
 THIS DRAWING IS UNPUBLISHED.
 RELEASED FOR PUBLICATION
 BY AMP INCORPORATED. ALL INTERNATIONAL RIGHTS RESERVED.
 © copyright 19

REVOLUTIONS		DATE	APP
NO	BY		
0	BD	48	
1			
2			
3			
4			
5			
6			
7			



- 1. CONTACTS ACCEPT 24-20 AWG RANGE.
- ▲ NYLON, GLASS FILLED, UL 94V-0 RATED, BLACK.
- ▲ PVC, UL 94V-0 RATED, BLACK.
- ▲ BRASS.
- ▲ CARBON STEEL.
- ▲ CABLE CLAMPS, ZINC, SCREWS & NUTS, CARBON STEEL.
- ▲ GOLD PLATING PER MIL-G-45204; NICKEL PLATING PER QQ-N-290;
- ▲ TIN PLATING PER MIL-T-10727; COPPER PLATING PER MIL-C-14550;
- ▲ ZINC PLATING PER ASTM B633, TYPE III, CLASS SC1, CLEAR CHROMATE.
- ▲ GOLD FLASH FOR A LENGTH OF 3.81(.150) MIN FROM MATING END, 2.54µm(.000100) MIN TIN OR TIN-LEAD ON OPPOSITE END FOR A LENGTH OF 4.06(.160) MIN FROM END OF INSULATION BARREL, BOTH OVER 0.76µm(.000030) MIN NICKEL ON ENTIRE CONTACT.
- ▲ 5.08µm(.000200) MIN TIN OVER 1.27µm(.000050) MIN COPPER.
- ▲ MOUNTING SCREWS & NUTS; 3.81µm(.000150) MIN ZINC; FILISTER HEAD SCREWS; ZINC.

SMALL PACK		749B05-6	
PACKAGING TYPE		PART NO	
AMP AMP Incorporated Morrisburg, PA 17105-3608			
NAME		PLUG KIT, UNASSEMBLED, SIZE 3, 25 POSITION, METAL SHELL, AMPLIWITE™ HDP-20	
MATERIAL		114-40003	
FINISH		114-40003	
APPLICATION SPEC		114-40003	
REWORK		SCALE 3:1	
SHELLS		DRAWING NO 749B05-6	
CONTACTS		SIZE 00779	
HARDWARE		CAGE CODE 749B05-6	
INSERTS		DRAWING NO 749B05-6	
PRODUCT SPEC		SCALE 3:1	
HARDWARE		SHEET 1 OF 1	
CONTACTS		CUSTOMER DRAWING	
SHELLS			

01-MAY-98 14:43:12 eep1676 /home/srv0264/ess04/dep04023/comp1676/etmod