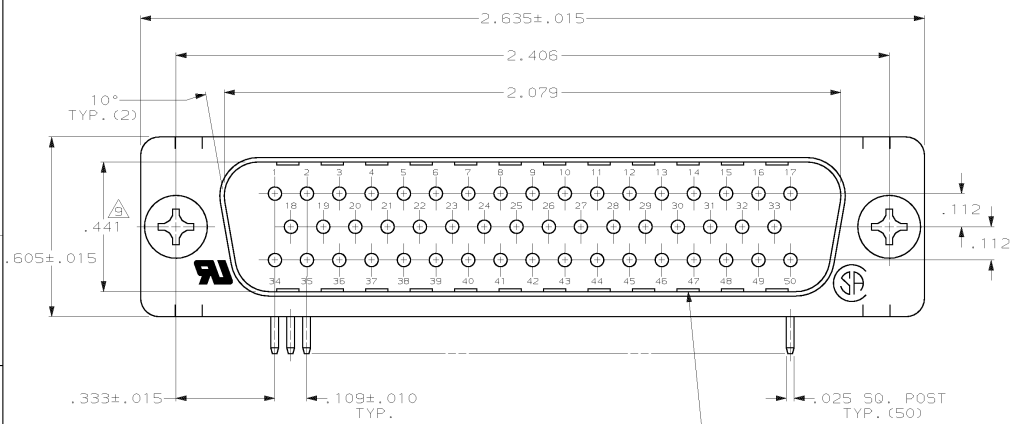
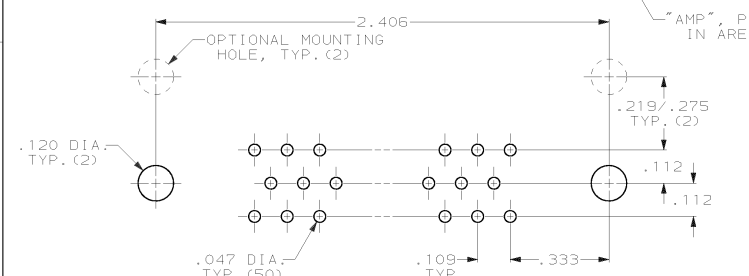
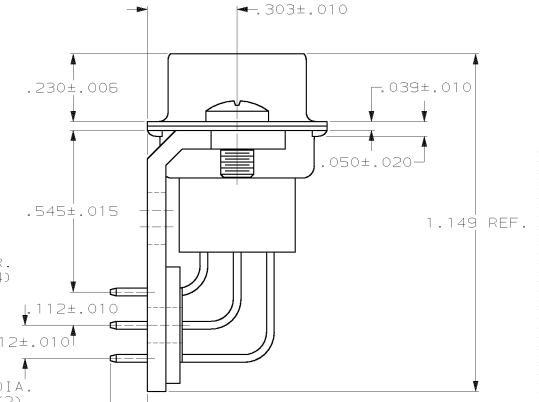
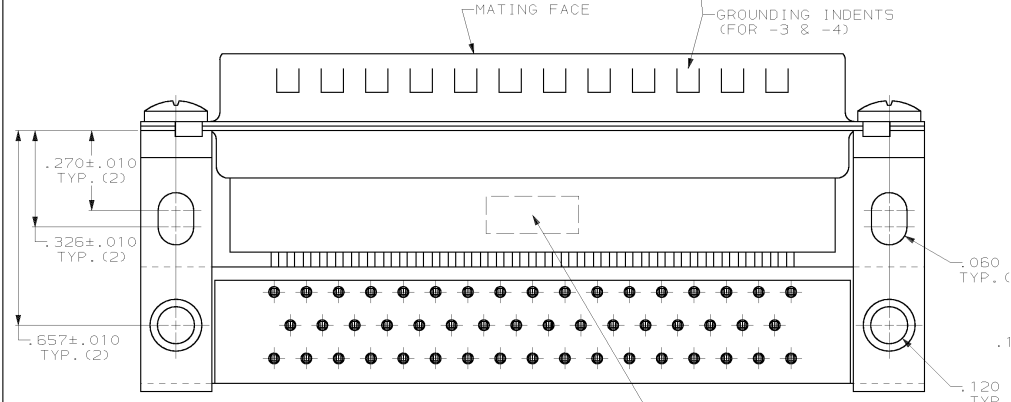


THIS DRAWING IS UNPUBLISHED. RELEASED FOR PUBLICATION .19
 © COPYRIGHT 19 BY AMP INCORPORATED. ALL INTERNATIONAL RIGHTS RESERVED.

LOC	DIS1	P	F	ZONE	LTR	DESCRIPTION	DATE	APPD
BD	77				J	SUPERSEDED -3 PER EC 0020-587-96	27 FEB 97	RT
					K	REV PER EC 0640-429-98	11 MAR 98	RT



- CONNECTOR MATES WITH ANY 50 POS. RECEPTACLE IN AMPLIMITE SERIES & COMPLIES WITH AMP SPEC. 108-40,005 WHERE APPLICABLE.
- FLAME RETARDANT 94V-0 RATED THERMOPLASTIC; COLOR: BLACK.
- STEEL PER ASTM A109.
- BRASS PER MIL-C-50.
- TIN PLATING PER MIL-T-10727, GOLD PLATING PER MIL-G-45204, NICKEL PLATING PER QQ-N-290.
- TIN PLATED.
- GOLD FLASH FOR A LENGTH OF .150 MIN FROM MATING END, .000100 MIN TIN-LEAD ON OPPOSITE END, BOTH OVER .000050 MIN NICKEL.
- GOLD PLATED FOR LENGTH OF .150 MIN FROM MATING END, .000030 MIN GOLD IN MATED AREA, .000100 MIN TIN-LEAD ON OPPOSITE END, BOTH OVER .000050 MIN NICKEL.
- THIS DIMENSION IS .436 FOR -3 & -4.



DD NOT SCALE PRINT. UNLESS SPECIFIED DIMENSIONS IN INCHES TOLERANCES ON : 2 PL DEC ± .005 3 PL DEC ± .005 ANGLES ± 2"	DR 12-22-83 J.GERACE CHK 12-22-83 J.GERACE APPD 03-15-84 P.SWEIGARD APPD 03-15-84 J.ASSINI	AMP AMP Incorporated Harrisburg, PA 17105-3608
MATERIAL MOLDED PARTS: Δ SHELLS & BRACKETS: Δ CONTACTS: Δ	PRODUCT SPEC -	NAME PLUG ASSEMBLY, SIZE 5, 50 POSN, RIGHT ANGLE, .545 SERIES, .025 50. POSTS, AMPLIMITE™ HDP
FINISH SHELLS & BRACKETS: Δ CONTACTS: SEE TABLE	APPLICATION SPEC -	SIZE C 00779
	WEIGHT -	DRAWING NO C-745355
		SCALE -
		SHEET 1 OF 1