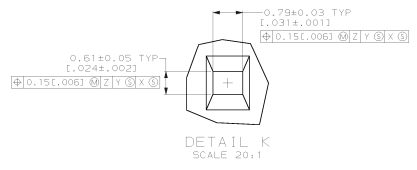
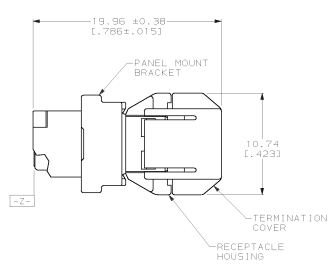
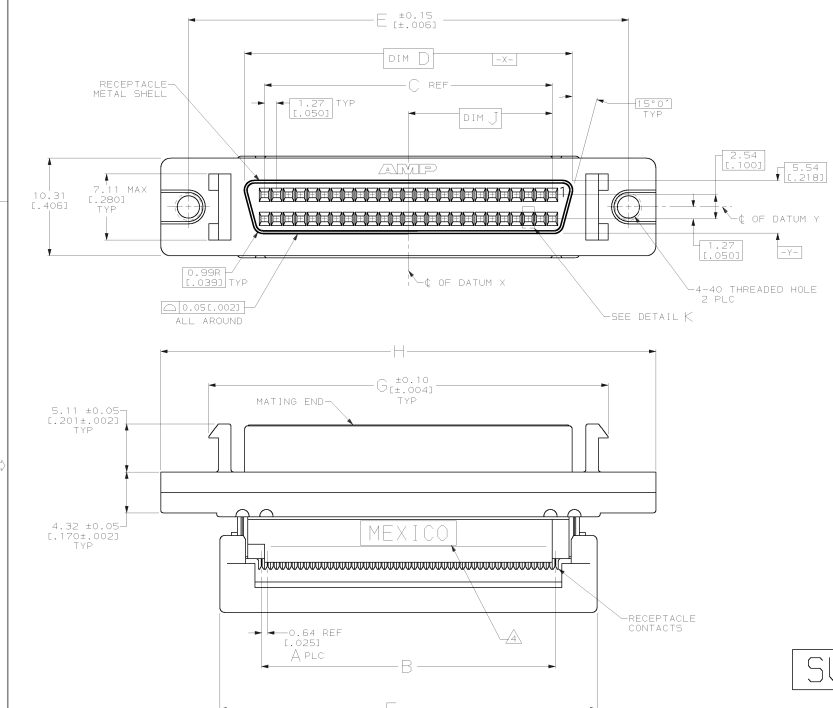


| REV | GP | APP | DATE | DESCRIPTION                   | DATE | APP |
|-----|----|-----|------|-------------------------------|------|-----|
| 1   |    |     |      | REVISIONS                     |      |     |
| 2   |    |     |      | 1 SUPERCEDED PER 051C-0019-01 |      | CC  |



**SUPERCEDED BY 390399-7 & 2-390399-7**

**SUPERCEDED BY 2-390399-7**  
**SUPERCEDED BY 390399-7**

- MATERIAL:**  
 RECEPTACLE CONTACTS: PHOSPHOR BRONZE  
 RECEPTACLE METAL SHELL: CARBON STEEL  
 PANEL MOUNT BRACKET: ZINC  
 RECEPTACLE HOUSING: UL 94V-0 RATED THERMOPLASTIC, COLOR: BLACK.  
 TERMINATION COVER- UL 94V-0 RATED THERMOPLASTIC, COLOR: BLACK.
- FINISH:**  
 RECEPTACLE CONTACTS: 0.76µm [L.00030] MIN GOLD FOR A LENGTH OF 0.64 [L.025] MIN  
 0.13 [L.005] MAX FROM MATING END, 1.27µm [L.00050] MIN TIN-LEAD FOR A LENGTH OF  
 1.30 [L.075] MIN FROM OPPOSITE END, BOTH OVER 1.27µm [L.00050] MIN NICKEL.  
 RECEPTACLE METAL SHELL: 5.08µm [L.000200] MIN NICKEL OVER 1.27µm [L.00050] MIN COPPER.  
 PANEL MOUNT BRACKET: 5.08 µm [L.000200] MIN NICKEL OVER 1.27µm [L.00050] MIN COPPER.  
 7.62 µm [L.000300] MIN COPPER.
- RECOMMENDED WIRE:**  
 30 AWG STRANDED RIBBON CABLE- SEE AMP DRAWING NO. 786108.  
 30 AWG SOLID RIBBON CABLE- SEE AMP DRAWING NO. 786109.
- OPTIONAL MARKING IN THIS AREA, EITHER SIDE.**  
 OBSELETE PART NUMBER.

| TUBE      | 30 AWG | 20.96 [L.825] | 63.88 [L.2515] | 53.72 [L.2115] | 51.38 [L.2023] | 58.04 [L.2285] | 46.13 [L.1816] | 41.91 [L.1650] | 42.54 [L.1675] | 67 | 68 | 1-786884-7   |
|-----------|--------|---------------|----------------|----------------|----------------|----------------|----------------|----------------|----------------|----|----|--------------|
| TRAY      | 30 AWG | 20.96 [L.825] | 63.88 [L.2515] | 53.72 [L.2115] | 51.38 [L.2023] | 58.04 [L.2285] | 46.13 [L.1816] | 41.91 [L.1650] | 42.54 [L.1675] | 67 | 68 | 786884-7     |
| PACKAGING | 30 AWG | 15.24 [L.600] | 52.45 [L.2065] | 42.28 [L.1665] | 39.95 [L.1573] | 46.61 [L.1835] | 34.70 [L.1366] | 30.48 [L.1200] | 31.12 [L.1225] | 49 | 50 | 786884-5     |
|           |        | J             | H              | G              | F              | E              | D              | C              | B              | A  |    | NO. OF PAGES |

DO NOT SCALE PRINT, UNLESS SPECIFIED DIMENSIONS IN mm (INCHES) POLYMER: 90 2 PLC SEE # R13 1.050 MOLEX # "

DR 05/14/83 C.080804  
 CHR 5-20-83 8.37096  
 APPD 5-21-83 1.46501  
 APPD 5-21-83 2.46501  
 PRODUCT SPEC 108-1359

AMP Incorporated Harrisburg, PA 17105-3608

NAME RECEPTACLE ASSEMBLY, RAILLESS, PANEL MOUNT, .025 CENTERLINE, .050 SERIES, ANPLIMITE

SIZE D 00779  
 SCALE S:1  
 DRAWING NO. 786884  
 SHEET 1 OF 1

APPLICATOR SPEC 114-40048

RETURN