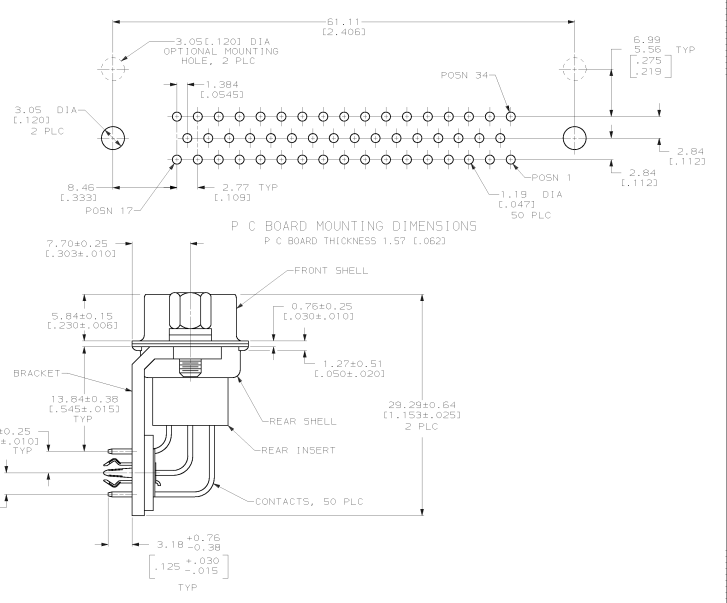
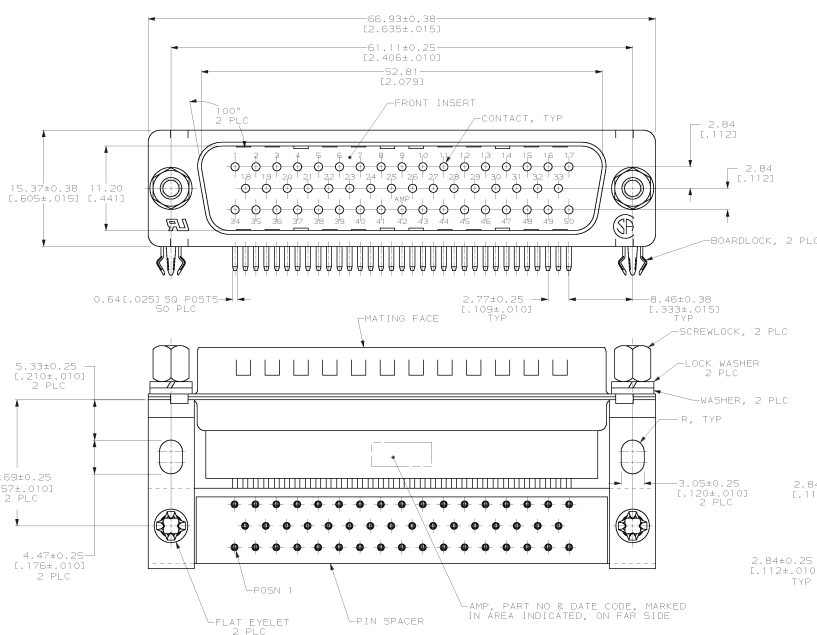


REVOLUTIONS		DATE	APPD
0	KAS 90-0962-1, RISE PER RFR 3310	2-1-81	HP
A	REVISED PER ECN B05112	10-11-81	HP
B	REV PER ECN 0540-429-58	11-11-81	RT



- ▲ NYLON OR POLYESTER, UL 94V-0 RATED, BLACK.
- ▲ NYLON, UL 94V-0 RATED, BLACK.
- ▲ CARBON STEEL PER ASTM A109.
- ▲ PHOSPHOR BRONZE PER 00-B-750.
- ▲ WASHERS AND SCREWLOCKS: CARBON STEEL PER ASTM A108.
- ▲ LOCKWASHERS: CARBON STEEL PER 00-5-700.
- ▲ TIN PLATING PER MIL-T-10727; GOLD PLATING PER MIL-Q-45204; NICKEL PLATING PER 00-N-250; ZINC PLATING PER ASTM B633, TYPE III, CLASS SC1, CLEAR CHROMATE; COPPER PLATING PER MIL-C-14550.
- ▲ 5.08µm (1.000200) MIN TIN OVER 1.27µm (1.000500) MIN COPPER.
- ▲ GOLD PLATED FOR A LENGTH OF 3.81 (1.50) MIN FROM MATING END, 0.76µm (1.000030) MIN GOLD IN MATED AREA, 2.54µm (1.000100) MIN TIN-LEAD FOR A LENGTH OF .394 (1.155) MIN ON OPPOSITE END, ALL OVER 1.27µm (1.000500) MIN NICKEL.
- ▲ LOCKWASHERS, WASHERS & SCREWLOCKS: 5.08µm (1.000200) MIN ZINC CLEAR CHROMATE.

DO NOT SCALE PRINT. UNLESS SPECIFIED DIMENSIONS IN MM (INCHES) TAKE PRECEDENCE OVER DIMENSIONS IN INCHES (MM).		DR 2-1-81 H NCL	750365-1 PART NO.
CRK 2-7-81 2 MILLION	AMPD 2-10-81 5 BRIGMOLDER	AMPD 2-7-81 2 ROME	AMP Incorporated Harrisburg, PA 17105-3608
MATERIAL: BRASS	PRODUCT SPEC: 108-40025	APPLICATION SPEC: 114-40013	NAME: PLUS ASSEMBLY, SIZE 5, 50 POSN, RIGHT ANGLE, .545 SERIES, .025 SO POSTS, WITH SCREWLOCKS AND BOARDLOCKS, AMPLIMITE™ HDP
FINISH: SHELLS & BRADSETS, CONTACTS, PIN SPACERS, EYELETS, HDP	SCALE: 4:1	SIZE: D	DRAWING NO: 00779
			750365
			SHEET 1 OF 1