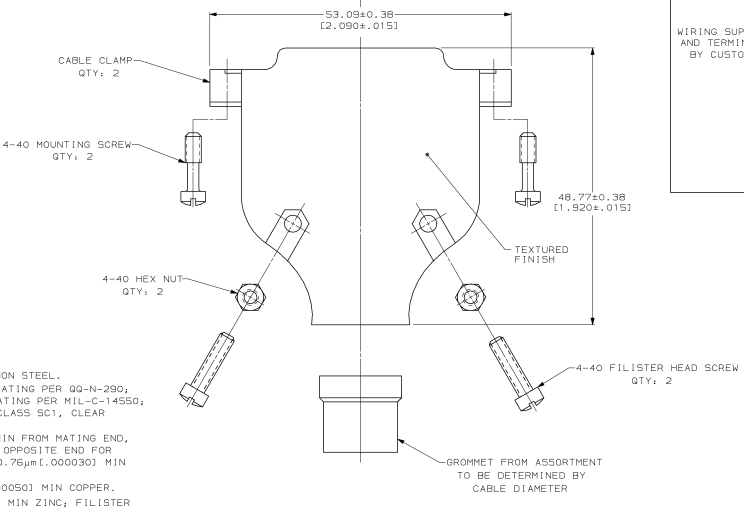
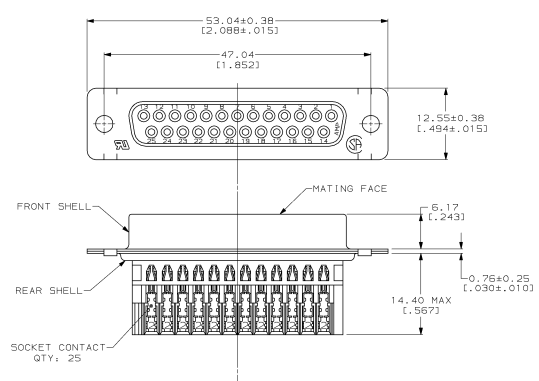
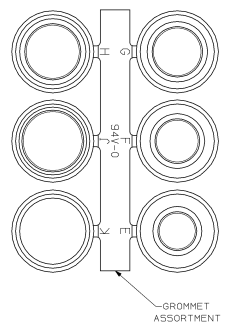


REVOLUTIONS		DATE	APPD
0	RELEASED PER NPR 2503	1-22-90	-
A	REV PER EC 0020-117-95	04/17/98	SB
B	REV PER EC 0020-309-95	06/04/98	JS
C	REV PER EC 0020-881-95	05/04/98	JS



- 1. CONTACTS ACCEPT 22-26 AWG RANGE.
- ▲ POLYESTER OR NYLON, GLASS FILLED, UL 94V-0 RATED, BLACK.
- ▲ PVC, UL 94V-0 RATED, BLACK.
- ▲ PHOSPHOR BRONZE PER ASTM B 103.
- ▲ CARBON STEEL.
- ▲ CABLE CLAMPS: ZINC, SCREWS & NUTS: CARBON STEEL.
- ▲ GOLD PLATING PER MIL-C-45204; NICKEL PLATING PER QQ-N-290; TIN PLATING PER MIL-T-10727; COPPER PLATING PER MIL-C-14550; ZINC PLATING PER ASTM B633, TYPE III, CLASS SC1, CLEAR CHROMATE.
- ▲ GOLD FLASH FOR A LENGTH OF 2.54 (1.00) MIN FROM MATING END, 2.54µm (1.000100) MIN TIN OR TIN-LEAD ON OPPOSITE END FOR A LENGTH OF 6.60 (2.60) MIN, BOTH OVER 0.75µm (1.000030) MIN NICKEL ON ENTIRE CONTACT.
- ▲ 5.08µm (1.000200) MIN TIN OVER 1.27µm (1.000050) MIN COPPER.
- ▲ MOUNTING SCREWS & NUTS: 3.81µm (1.000150) MIN ZINC; FILISTER HEAD SCREWS: ZINC.

DO NOT SCALE PRINT, UNLESS SPECIFIED.		DR 1-22-90	PART NO 749814-3	
DIMENSIONS IN mm (INCHES)		K. S. LINDER	AMP INCORPORATED	
TOLERANCES ON:		CHK 6-4-90	Mfg. Div. No. 17108	
1 P L.C. DEC ± 0.13 (1.00)		APPD 6-5-90	NAME RECPTACLE KIT, UNASSEMBLED,	
2 P L.C. DEC ± 0.13 (1.00)		8 FAYLOR	SIZE 3, 25 POSITION, METAL SHELL,	
3 P L.C. DEC ± 0.13 (1.00)		APPD 6-5-90	AMPLIMITE® HDE-20	
MATERIAL		J. KOSIWI	PRODUCT SPEC 108-40011	
HOUSING: ▲		APPD 6-5-90	APPLICATION SPEC 114-40003	
CONTACTS: ▲		8 FAYLOR	SIZE D	
SHELLS: ▲		APPD 6-5-90	CAGE CODE 00779	
FINISH: ▲		8 FAYLOR	DRAWING NO 749814-3	
CONTACTS: ▲		APPD 6-5-90	SCALE 3:1	
SHELLS: ▲		8 FAYLOR	SHEET 1 OF 1	
HARDWARE: ▲		APPD 6-5-90	CUSTOMER DRAWING	