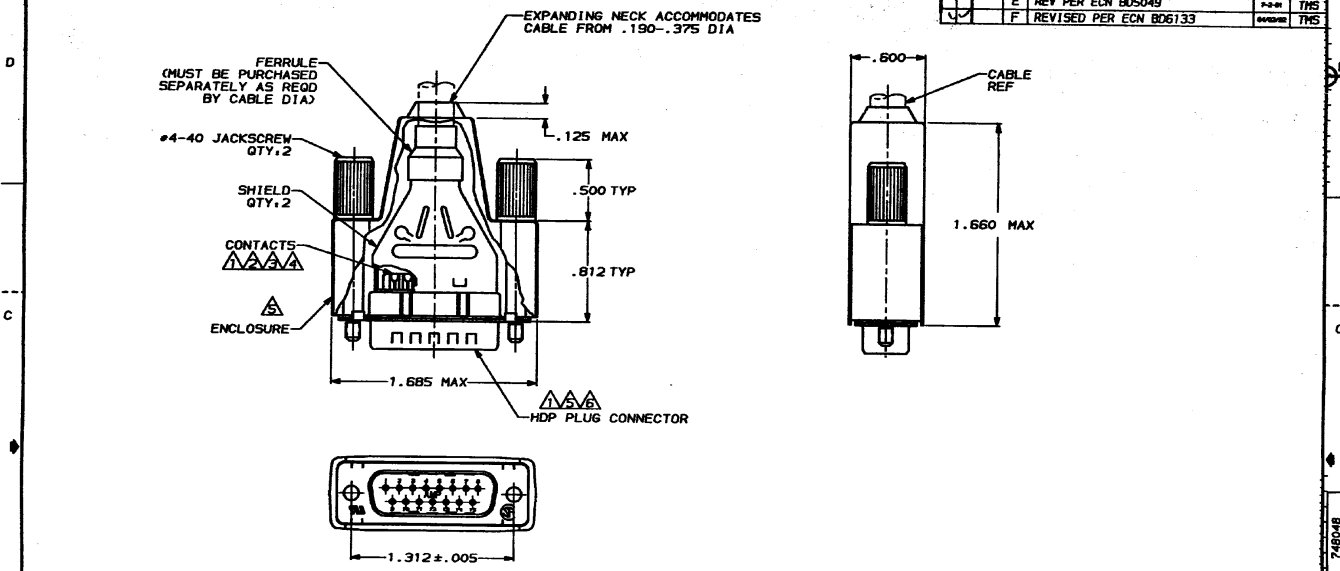


DRAWING MADE IN THIRD ANGLE PROJECTION

THIS DRAWING IS UNPUBLISHED. RELEASED FOR PUBLICATION
 © COPYRIGHT 19 BY AMP INCORPORATED. ALL INTERNATIONAL RIGHTS RESERVED.

REV	APP	DATE	REVISIONS	BY	APP
2	BO	39			
			REV PER ECN 805049		THS
			REVISED PER ECN 806133		THS



- ⚠️ PLUG CONNECTOR FULLY LOADED WITH CONTACTS. ALL OTHER PARTS ARE SHIPPED UNASSEMBLED, EACH PART INDIVIDUALLY BULK PACKED.
- ⚠️ PHOSPHOR BRONZE PER QQ-B-750.
- ⚠️ SOLDER CUP WILL ACCOMMODATE 20 AWG MAX WIRE.
- ⚠️ GOLD FLASH FOR LENGTH OF .150 MIN ON MATING END. .000150-.000300 TIN LEAD ON SOLDER END, ALL OVER .000030 NICKEL ON ENTIRE CONTACT.
- ⚠️ FLAME RETARDANT 94V-0 RATED THERMOPLASTIC, BLACK.
- ⚠️ STEEL PER ASTM A109.
- ⚠️ TIN PLATING PER MIL-T-10727.
- ⚠️ ZINC PLATING PER ASTM B633, TYPE II, CLASS SC1, BLACK CHROMATE.

CONTACT FINISH	748048-1
PART NUMBER	

DO NOT SCALE PRINT. UNLESS SPECIFIED DIMENSIONS IN INCHES TOLERANCES ON: 2 PLC DEC ± .020 3 PLC DEC ± .030 ANGLES ±		DR 6-2-50 J. GALLUCCI DR CHK 8-31-50 J. MCCLINTON APPD 8-4-50 BOB TAYLOR APPD 8-4-50 J. ASSINI PRODUCT SPEC - APPLICATION SPEC - WEIGHT -		AMP INCORPORATED Harrisburg, Pa. 17106 NAME BULK KIT, PLUG, AMPLIMITE™, SOLDER CUP, SHIELDING ENCLOSURE, 15 POSN, SIZE 2, HDP-20 SIZE C PSCR NO 00779 DRAWING NO 748048 SCALE 2:1 SHEET 1 OF 1	
MATERIAL CONTACTS, SHELDS & SHIELDS, JACKSCREWS, ZINC ALLOY FINISH CONTACTS, SEE TABLE SHELDS & SHIELDS, JACKSCREWS,					

CUSTOMER DRAWING

AMP 1074-4 REV 2-68
 AMP 1502 15-25-50 amp2502 / amp2502/amp2502/amp2502/amp2502