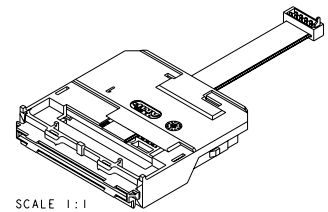
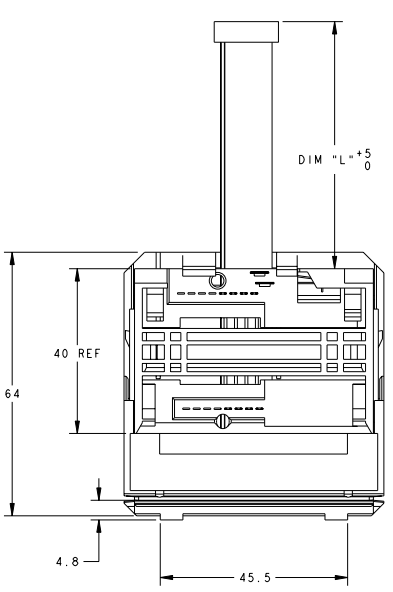
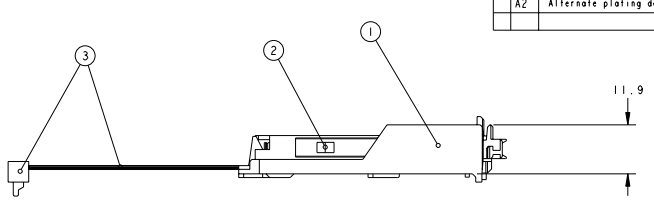
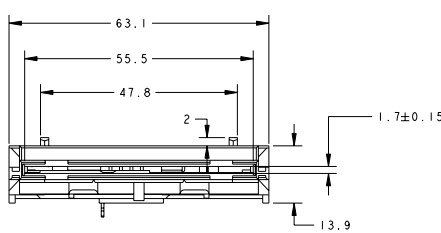


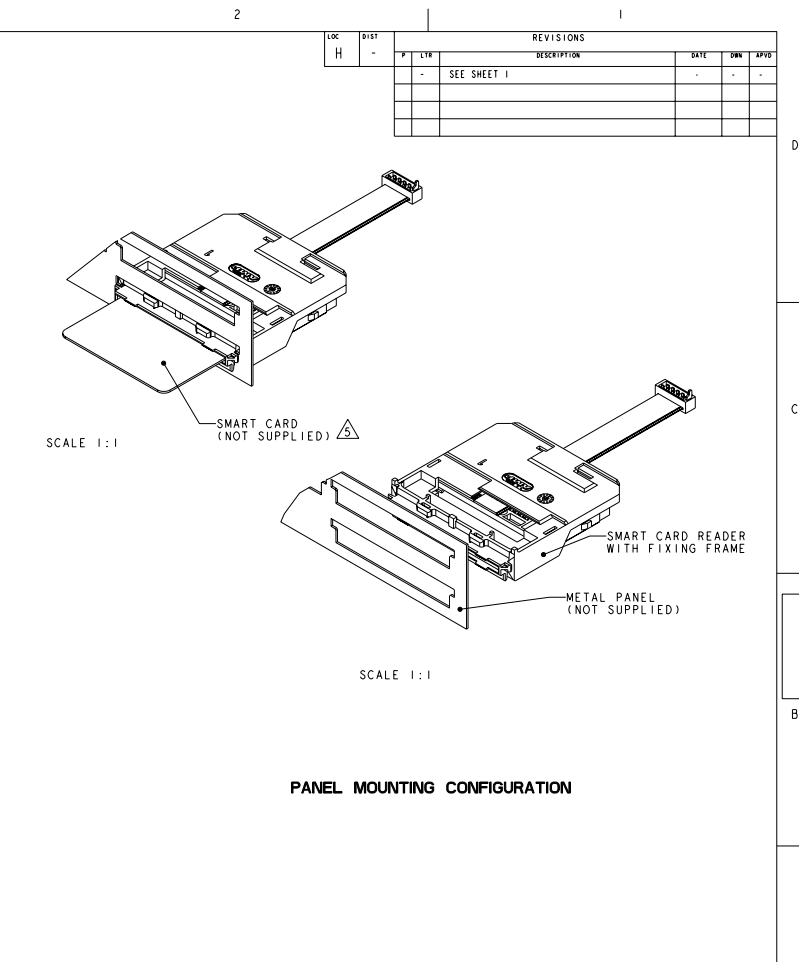
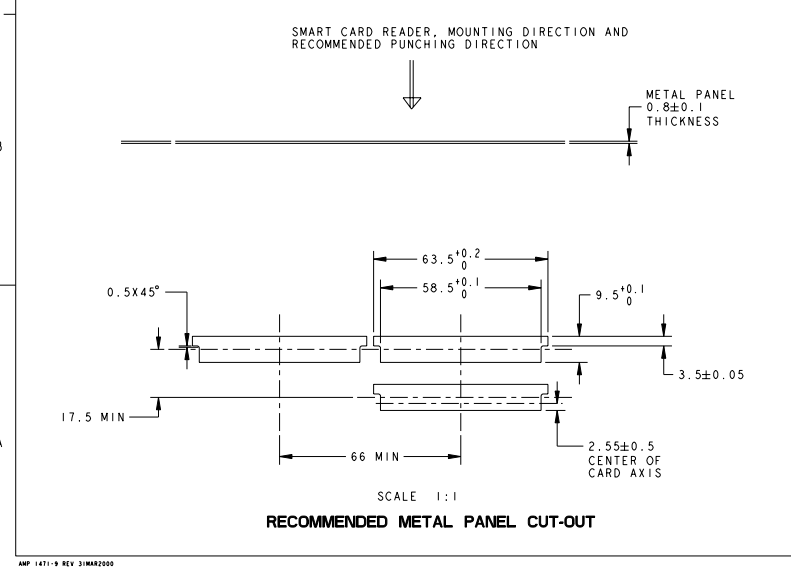
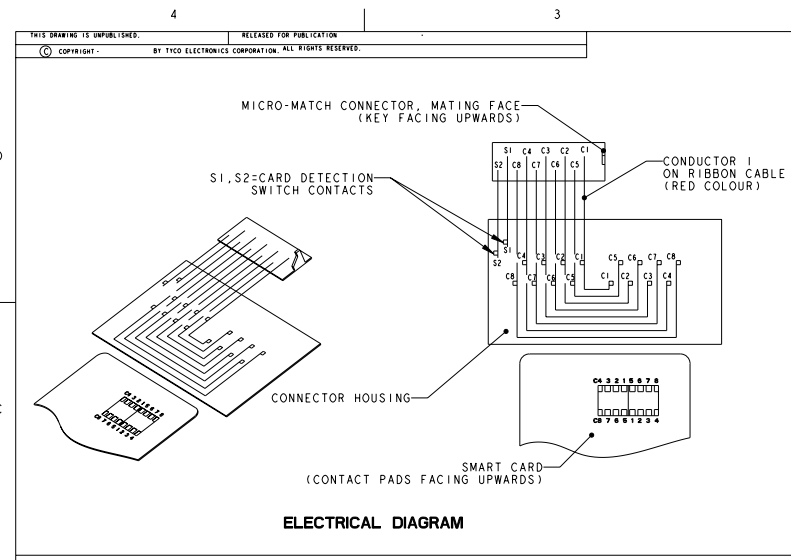
| LOC |     | DIST                             |           | REVISIONS |        |  |  |
|-----|-----|----------------------------------|-----------|-----------|--------|--|--|
| P   | LYR | DESCRIPTION                      | DATE      | DRW       | APPROV |  |  |
| A   |     | EH10-0478-04                     | 06DEC2004 | RC        | PJ     |  |  |
| A1  |     | EH10-0156-05                     | 02FEB2005 | RC        | PJ     |  |  |
| A2  |     | Alternate plating details added. | 12NOV2009 | GG        | PKS    |  |  |



- 1 SMART CARD READER : PBT G-F, BLACK, UL 94V0  
 FIXING FRAME : ABS, BLACK, UL 94V0  
 SIGNAL AND SWITCH CONTACTS : PHOSPHOR BRONZE.
- 2 ALL CONTACTS : 0.00076 GOLD ON MATING AREAS,  
 0.0025 TIN (LEADFREE/MATTE) ON SOLDERTAILS,  
 ALL OVER 0.001 NICKEL. (OR)
- 3 SMART CARD READER CONTACTS:PLATING:0.08 micron GOLD ON MATING AREAS  
 OVER PDNI PLATED 0.3 micron NICKEL UNDERPLATING 2 micron.  
 ON SOLDERTAILS AREA 2.5 micron TIN (LEADFREE/MATTE)
- 4 TE P/N'S ASS'Y :  
 - 5953497-1/-3/-5/-6/-8/1--0 8 POSITIONS ISO 7816  
 - 5953497-2/-4/-7 16 POSITIONS ISO/CP8 AFNOR
- 5 UL STYLE 2651 RIBBON CABLE PVC AND  
 10 POSITIONS MICRO-MATCH CONNECTOR;  
 TO BE MATED WITH  
 I-215079-0 THROUGH HOLE VERSION OR I-188275-0 SMT VERSION
- 6 TE SMART CARD RECEPTACLE DESIGNED TO ACCEPT ISO 7810-7816 TYPE  
 INTEGRATED CIRCUIT SMART CARDS (0.76MM REF. THICKNESS)  
 SEE SHEET 2/2
- 7 CONNECTOR MEETS EMV REQUIREMENTS

|                   |   |   |   |   |   |   |   |   |   |                                   |      |
|-------------------|---|---|---|---|---|---|---|---|---|-----------------------------------|------|
| -                 | - | 1 | 1 | - | - | - | - | - | - | RIBBON CABLE ASS'Y, L = 70mm      | 3    |
| -                 | - | - | - | 1 | - | - | - | - | - | RIBBON CABLE ASS'Y, L = 130mm     | 3    |
| -                 | - | - | - | - | 1 | - | - | - | - | RIBBON CABLE ASS'Y, L = 140mm     | 3    |
| 1                 | 1 | - | - | - | - | 1 | - | - | - | RIBBON CABLE ASS'Y, L = 100mm     | 3    |
| -                 | - | - | - | - | - | 1 | 1 | - | - | RIBBON CABLE ASS'Y, L = 60mm      | 3    |
| 1                 | 1 | - | 1 | 1 | - | 1 | - | 1 | - | SMART CARD READER ASS'Y : 8 POS.  | 2    |
| -                 | - | 1 | - | - | 1 | - | 1 | - | - | SMART CARD READER ASS'Y : 16 POS. | 2    |
| 1                 | 1 | 1 | 1 | 1 | 1 | 1 | 1 | 1 | 1 | FIXING FRAME -2                   | 1    |
| ASS'Y P/N 5953497 |   |   |   |   |   |   |   |   |   |                                   |      |
| DESCRIPTION       |   |   |   |   |   |   |   |   |   |                                   | ITEM |

|               |  |                     |  |           |  |            |  |                                   |  |
|---------------|--|---------------------|--|-----------|--|------------|--|-----------------------------------|--|
| DIMENSIONS:   |  | TO DRAWING REVISED: |  | DATE      |  | BY         |  | TYCO ELECTRONICS NEDERLAND B.V.   |  |
| mm            |  | OPERATED SPECIFICS: |  | 06-Dec-04 |  | Coolen     |  | 's-HERTOGENBOSCH, THE NETHERLANDS |  |
| 0 PLC #0-5    |  | APPROVED:           |  | P         |  | Jager      |  | TYCO Electronics                  |  |
| 1 PLC #0-3    |  | PRODUCT SPEC        |  | 108-15174 |  | NAME       |  | SMART CARD READER 0.76 mm;        |  |
| 2 PLC #0-13   |  | APPLICATION SPEC    |  |           |  | SITE       |  | PANEL MOUNT WITH CABLE            |  |
| 3 PLC #0-013  |  | WEIGHT              |  |           |  | CAGE CODE  |  | BLADE SWITCH, NORMALLY CLOSED     |  |
| 4 PLC #0-0001 |  | CUSTOMER DRAWING    |  |           |  | DRAWING NO |  | RESTRICTED TO                     |  |
| ANGLES        |  | SCALE               |  | 3:2       |  | A2         |  | 00779                             |  |
| FINISH        |  | SHEET               |  | 1         |  | OF         |  | 2                                 |  |
|               |  | REV                 |  | A2        |  |            |  |                                   |  |



|             |  |                           |  |                  |  |                                   |  |
|-------------|--|---------------------------|--|------------------|--|-----------------------------------|--|
| DIMENSIONS: |  | TO GRANGE'S SPECIFICATION |  | DW 06-Dec-04     |  | TYCO ELECTRONICS NEDERLAND B.V.   |  |
| mm          |  | OPERATED SPECIES:         |  | R Coolen         |  | 's-HERTOGENBOSCH, THE NETHERLANDS |  |
|             |  |                           |  | P Jager          |  |                                   |  |
| MATERIAL:   |  | PLC #0-5                  |  | PRODUCT SPEC     |  | NAME                              |  |
| FINISH:     |  | PLC #0-3                  |  | APPLICATION SPEC |  | SMART CARD READER 0.76 mm;        |  |
|             |  | PLC #0-13                 |  | WEIGHT           |  | PANEL MOUNT WITH CABLE            |  |
|             |  | PLC #0-013                |  | CUSTOMER DRAWING |  | BLADE SWITCH, NORMALLY CLOSED     |  |
|             |  | PLC #0-0001               |  | SCALE 3:2        |  | SHEET 2 OF 2                      |  |
|             |  | ANGLES                    |  | SHEET CODE       |  | RESTRICTED TO                     |  |
|             |  |                           |  | A2 00779         |  | -                                 |  |
|             |  |                           |  | ©=5953497        |  | REV A2                            |  |

AMP 1471-9 REV 31MAR2000