

4

3

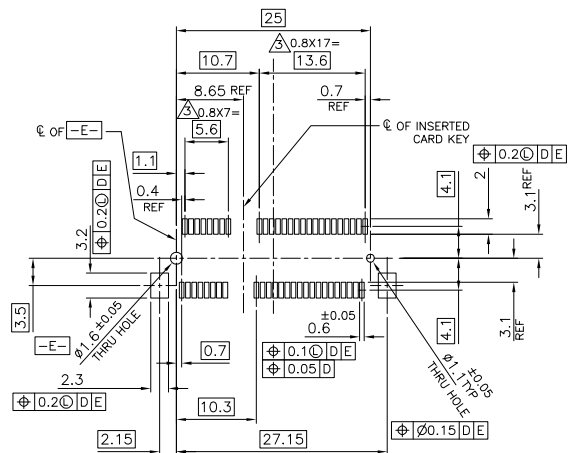
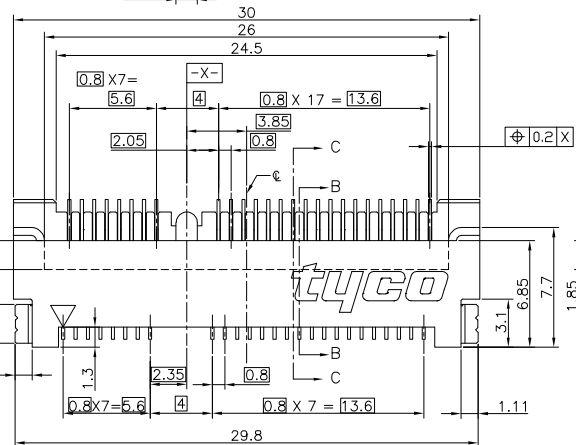
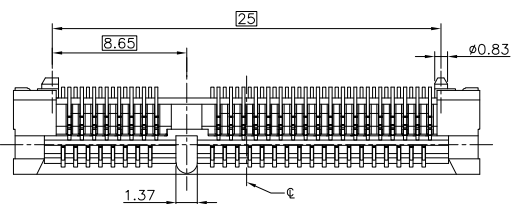
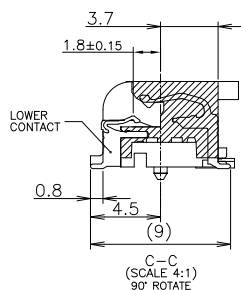
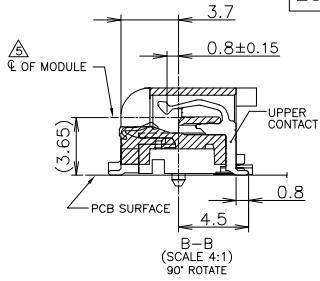
2

1

THIS DRAWING IS UNPUBLISHED. RELEASED FOR PUBLICATION MAR 2006.
 COPYRIGHT 2005 BY TYCO ELECTRONICS CORPORATION. ALL RIGHTS RESERVED.

LOC		DIST		REVISIONS				
P	LTR	DESCRIPTION			DATE	DWN	APVD	
C		REVISED (ECR-06-025478)			27OCT06	B.W	S.Y	

NOTE
 1. MATERIAL : HOUSING : HIGH TEMPERATURE THERMO PLASTIC UL94V-0
 COLOR:BLACK
 CONTACT : COPPER ALLOY
 SOLDER PEG : COPPER ALLOY
 2. FINISH : CONTACT : GOLD FLASH ON CONTACT AREA,
 ALL OVER NICKEL
 SOLDER PEG : TIN PLATE, ALL OVER NICKEL
 TOLERANCES NON-CUMMURATIVE
 4. [E] IS THE TOP SURFACE OF PCB.
 THE FLOATING VALUE BY SOLDERING IS NOT INCLUDED.



REFERENTIAL P.C. BOARD LAYOUT (SCALE 2:1)

H5.6	292443-1
HEIGHT	PART NUMBER
TOLERANCES UNLESS OTHERWISE SPECIFIED	
10 ≥	±0.2
30 ≥	>10 : ±0.25
100 ≥	>30 : ±0.3
ANGLES ±3°	

THIS DRAWING IS A CONTROLLED DOCUMENT.	
DIMENSIONS:	TOLERANCES UNLESS OTHERWISE SPECIFIED:
MM	0 PLC ±
	1 PLC ±
	2 PLC ±
	3 PLC ±
	4 PLC ±
	ANGLES ±
MATERIAL	FINISH
SEE NOTE	SEE NOTE

DWN	B.WONG	12APR06		Tyco Electronics Corporation	
CHK	T.KAWAMAE	12APR06		Shanghai, P.R.China, 200233	
APVD	S.YAO	12APR06	NAME	MINI PCI EXPRESS CONNECTOR ASSEMBLY (5.6H)	
PRODUCT SPEC			SIZE	CAGE CODE	DRAWING NO
APPLICATION SPEC			A3	00779	C-292443
WEIGHT			RESTRICTED TO		
CUSTOMER DRAWING			SCALE	SHEET	REV
			4:1	1 OF 3	C

4

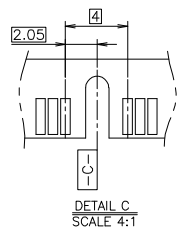
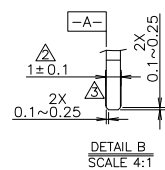
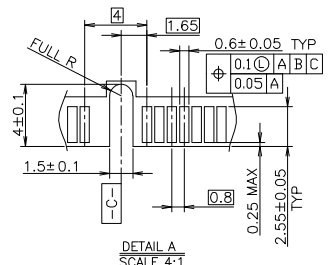
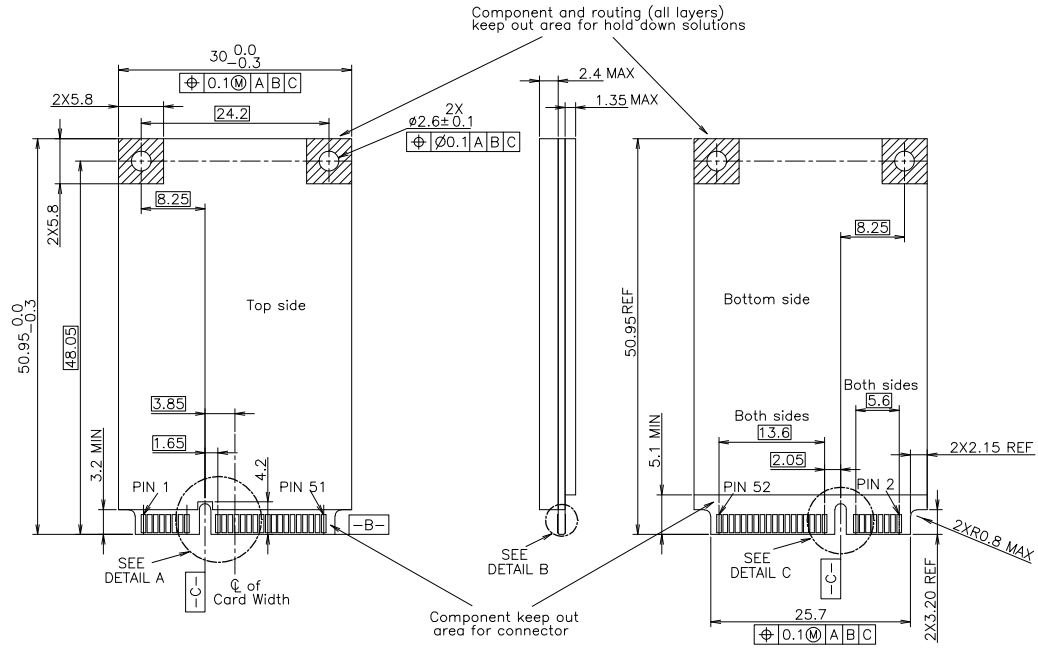
3

2

1

THIS DRAWING IS UNPUBLISHED. RELEASED FOR PUBLICATION MAR 2006.
 COPYRIGHT 2005 BY TYCO ELECTRONICS CORPORATION. ALL RIGHTS RESERVED.

LOC		DIST		REVISIONS				
P	LTR	DESCRIPTION			DATE	DWN	APVD	
-	-	SEE SHEET 1			-	-	-	



RECOMMENDED MATING P.C.B CONFIGURATION

NOTES
 1. PCI EXPRESS MINI CARD, PCB THICKNESS 1.0mm.
 2. CARD THICKNESS APPLIES ACROSS TABS AND INCLUDES PLATING AND/OR METALIZATION.
 3. BEVEL MUST BE FREE OF CUTTING BURRS.

TOLERANCES UNLESS OTHERWISE SPECIFIED	
10 ≥	± 0.2
30 ≥	> 10 : ± 0.25
100 ≥	> 30 : ± 0.3
ANGLES ± 3°	

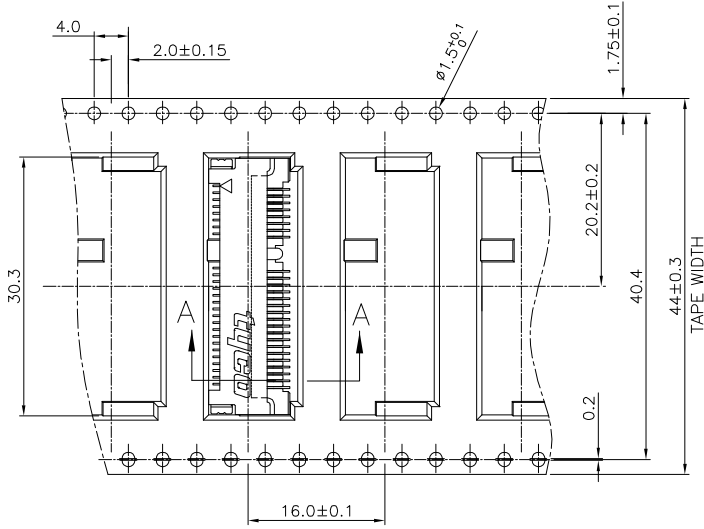
DIMENSIONS:		TOLERANCES UNLESS OTHERWISE SPECIFIED:	
MM		0 PLC	± -
		1 PLC	± -
		2 PLC	± -
		3 PLC	± -
		4 PLC	± -
		ANGLES	± -

DWN	-
CHK	-
APVD	-
PRODUCT SPEC	-
APPLICATION SPEC	-
WEIGHT	-
CUSTOMER DRAWING	

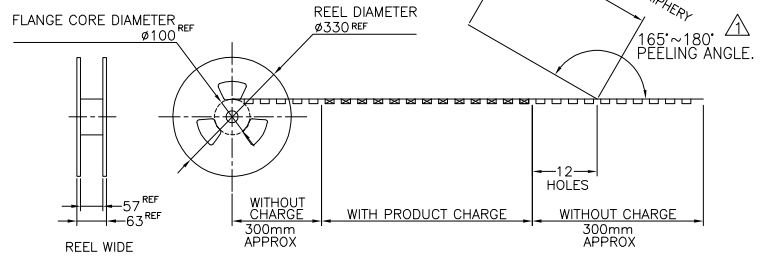
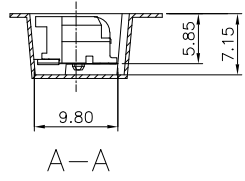
tyco Electronics		Tyco Electronics Corporation Shanghai, P.R.China, 200233	
NAME			
MINI PCI EXPRESS CONNECTOR ASSEMBLY (5.6H)			
SIZE	CAGE CODE	DRAWING NO	RESTRICTED TO
A3	00779	C-292443	-
SCALE		SHEET	REV
2:1		2 OF 3	C

THIS DRAWING IS UNPUBLISHED. RELEASED FOR PUBLICATION MAR 2006.
 © COPYRIGHT 2005 BY TYCO ELECTRONICS CORPORATION. ALL RIGHTS RESERVED.

LOC	DIST	REVISIONS				
P	LTR	DESCRIPTION	DATE	DWN	APVD	
ES		SEE SHEET 1				



1 PEELING RESISTANCE : 0.1N~1.3N
 (10gf~130gf)
 SPEED : 300mm/min



450EA	2-292965-1	292443-1
QTY/REEL	EMBOSS TAPE P/N	P/N

THIS DRAWING IS A CONTROLLED DOCUMENT.		DWN	Tyco Electronics Corporation		
DIMENSIONS: MM		CHK	Shanghai, P.R.China, 200233		
TOLERANCES UNLESS OTHERWISE SPECIFIED:		APVD	NAME		
0 PLC ± -		PRODUCT SPEC	MINI PCI EXPRESS CONNECTOR ASSEMBLY (5.6H)		
1 PLC ± -		APPLICATION SPEC	SIZE	CAGE CODE	DRAWING NO
2 PLC ± -		WEIGHT	A3	00779	292443
3 PLC ± -		CUSTOMER DRAWING	RESTRICTED TO		
4 PLC ± -		SCALE	NTS		
ANGLES ± -		SHEET	3 OF 3		
FINISH		REV	C		

AMP 1470-19 REV 31MAR2000