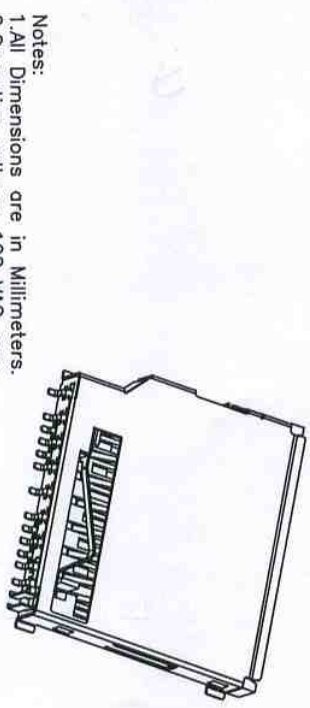
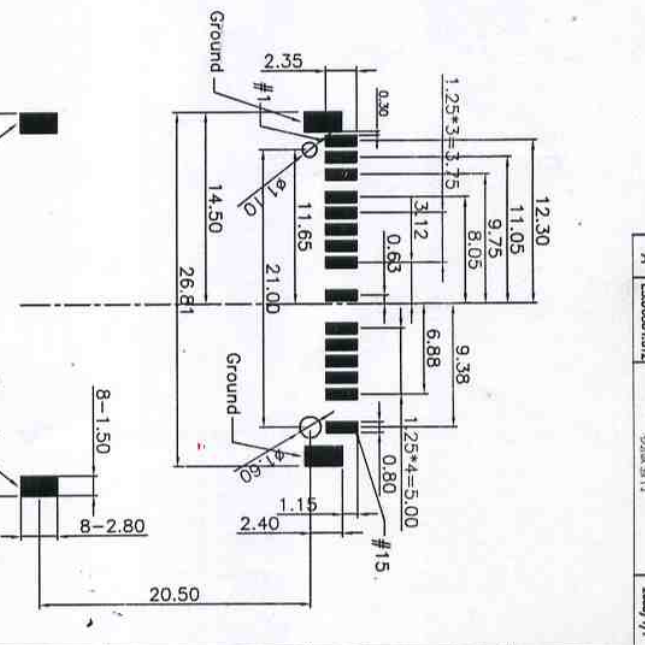
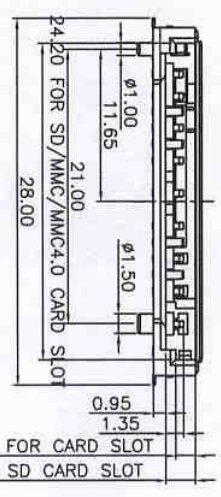
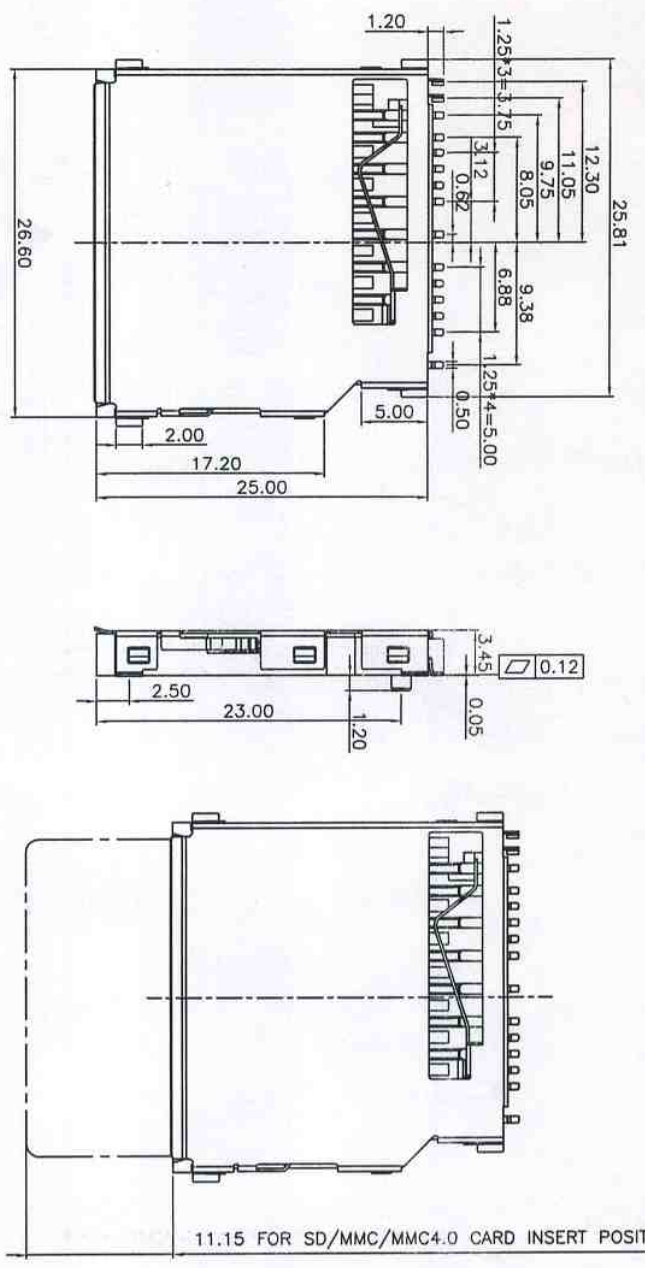


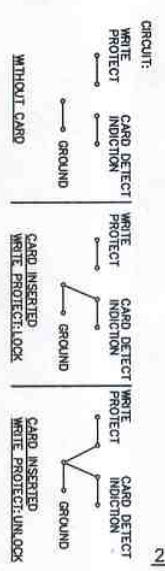
REV.	EQN.NO.	MODIFY/CONTENT	DATE
A	ES00804.012	勿加蓋零件	2008/4/1



- Notes:
1. All Dimensions are in Millimeters.
 2. Operation voltage: 100 VAC max.
 3. Current rating : 1 Amps max.
 4. Contact resistance: 40m ohms max.
 5. Insulation resistance: 1000M ohms min. 500 VDC
 6. Dielectric withstanding voltage: 500 VAC / 1minute
 7. Operating Temperature: -20°C to +60°C
 8. Storage Temperature: -40°C to +70°C
 9. Total Mating Force : 40N (MAX) at 25 mm/minute
 10. Total Unmating Force: 2N (MIN) at 25 mm/minute

RECOMMENDED P.C. BOARD LAYOUT(TOP VIEW)
TOLERANCES UNLESS OTHERWISE SPEC. ±0.05

NO.	SIGNALS FUNCTION	SD/MMC4.0
#1	WP/SH	SD
#2	CD SW	SD
#3	DATA (Data 1)	SD-8
#4	DATA (Data 0)	SD-7
#5	DATA (Data 7)	MMC-13
#6	GM/VS 2	SD-6
#7	DATA (Data 6)	MMC-12
#8	CLK	SD-5
#9	WCC/RWD	SD-4
#10	VSS 1	SD-3
#11	DATA(Data 5)	MMC-11
#12	CMD	SD-2
#13	DATA(Data 4)	MMC-10
#14	DATA(Data 3)	SD-1
#15	DATA(Data 2)	SD-9



GENERAL	TOLERANCE	FILE NO.	REV.	SIZE	PART NO.	TITLE	SHEET	DRAWN	CHECKED	APPROVED	MATERIAL	SCALE
X±0.50	.x ± 0.5 *	10100565	A	A4	10100565**	SD+MMC+MMC4.0 Conn.	1 OF 1	illy.li	LG, Zou	Treed	2008/4/1	no scdle
.X±0.38	.x ± 0.2 *											
.XX±0.25	.xx ± 0.1 *											

Amphenol Shouh Min Industry