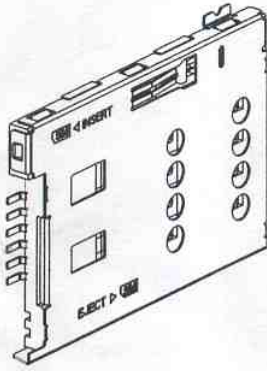


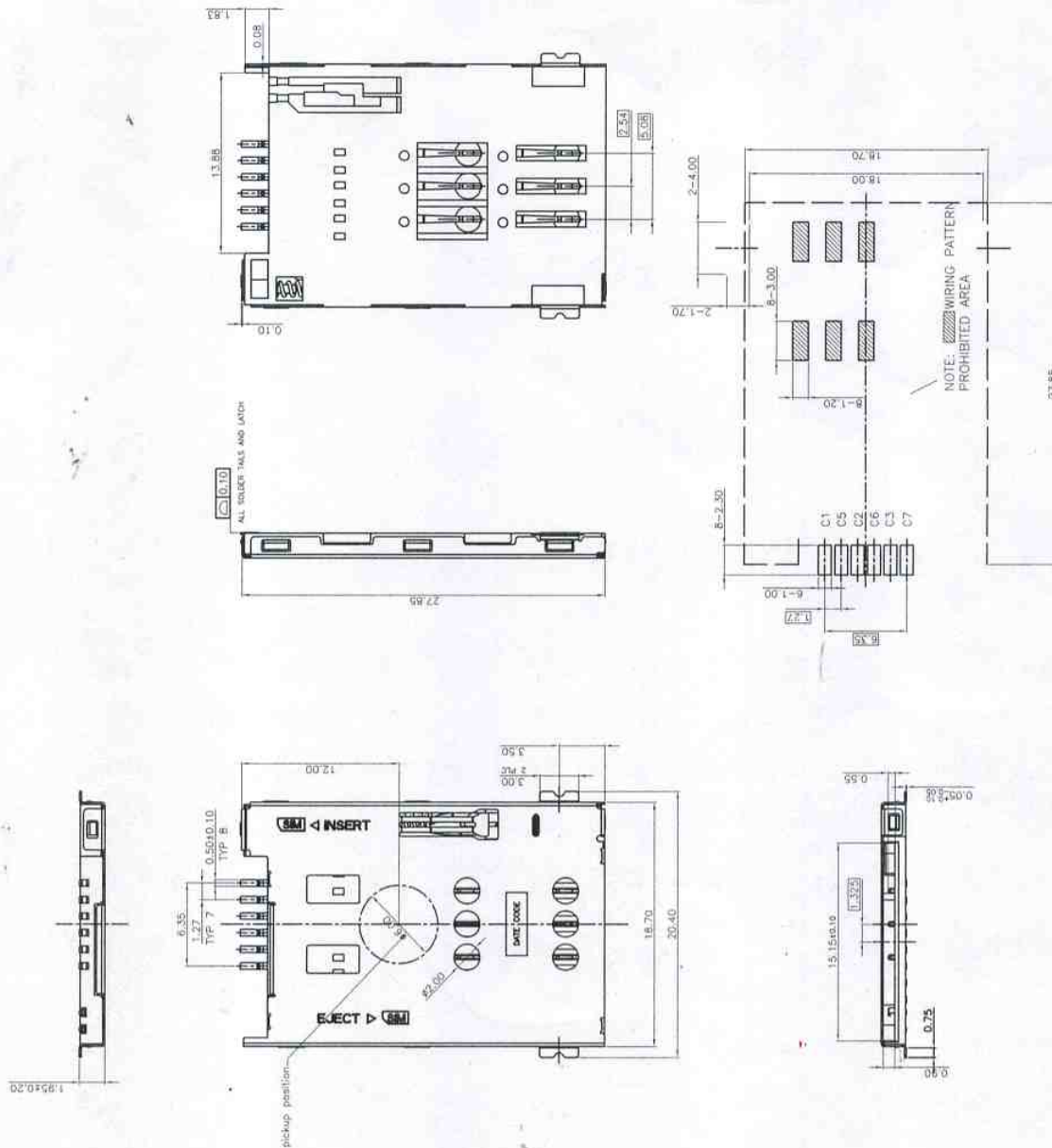
04/04/07

REV.	ECN NO.	MODIFY CONTENT	DATE
A		ANS 發行	03/20/07
B		PCB 圖面更新	04/04/07
C	EL007M-B9P	印刷 LOGO 更新	04/14/07



NOTES:

1. SPECIFICATIONS
 INSULATION RESISTANCE: 500M min. AT DC 500V DC
 WITHSTANDING VOLTAGE: 250V AC rms FOR 1 MINUTE
 CONTACT RESISTANCE: 100mΩ max. AT 10mA/20mV max
 CURRENT RATING: 0.5A
 VOLTAGE RATING: 5.0 vrms
 OPERATING TEMP. RANGE: -55 °C +85 °C
 MATING CYCLES: 5000 INSERTIONS
2. MATERIAL:
 INSULATOR: H-TEMPERATURE PLASTIC, UL 94V-0,
 COLOR: BLACK
 TERMINAL: COPPER ALLOY, T=0.15mm
 SWITCH: COPPER ALLOY, T=0.10mm
 SHELL: STAINLESS STEEL, T=0.15mm
3. FINISH:
 TERMINAL: 50μ" min NICKEL UNDERPLATED ON ALLOVER, GOLD PLATING
 ON CONTACT AREA, 80μ" min TIN ON SOLDER TAIL
 SHELL: 50μ" NICKEL UNDERPLATED ON ALLOVER, GOLD FLASH ON SOLDER
 LATCH



RECOMMENDED PCB LAYOUT

GENERAL	TOLERANCE	FILE NO.	PART NO.	DRAWN	MATERIAL	SCALE	N/A
X. ±0.50	x. ± 5*	101-00269	101-00269-xx		COCO		
.X ±0.38	.x ± 2*		SIM CARD READER 6PIN (PUSH/PUSH/W/O SWITCH)	CHECKED		04/14/2007	MM
.XX ±0.25	.xx ± 1*		SHEET 1/1	APPROVED			
				楊秀如 陳俊啟		(SM) Shouh Min Industry (ShenZhen) CO., LTD	