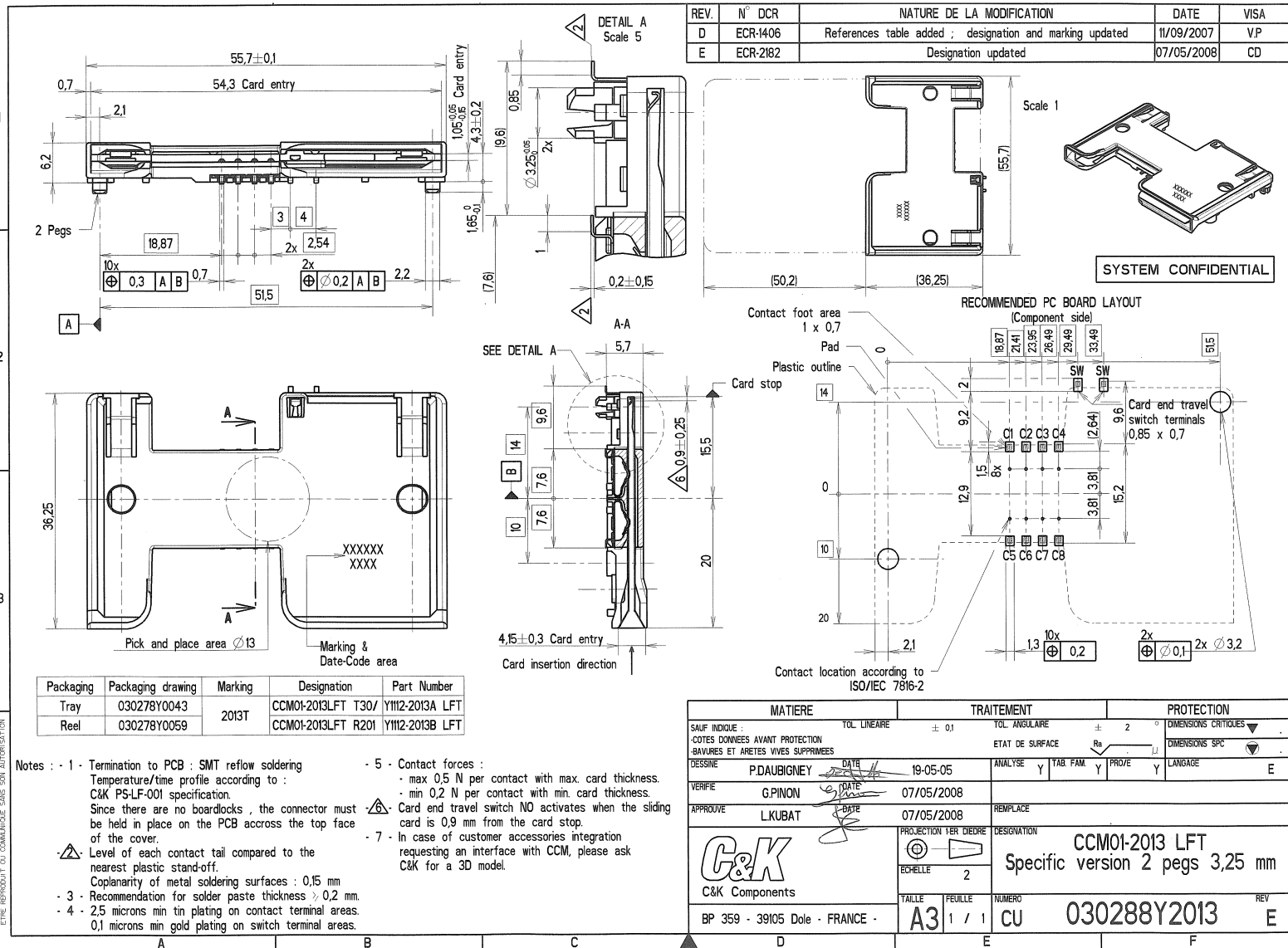


CE PLAN EST LA PROPRIETE DE C&K COMPONENTS SAS ET NE DOIT ETRE REPRODUIT OU COMMANDE SANS SON AUTORISATION



REV.	N° DCR	NATURE DE LA MODIFICATION	DATE	VISA
D	ECR-1406	References table added ; designation and marking updated	11/09/2007	VP
E	ECR-2182	Designation updated	07/05/2008	CD

Packaging	Packaging drawing	Marking	Designation	Part Number
Tray	030278Y0043	2013T	CCM01-2013LFT T30/	Y1112-2013A LFT
Reel	030278Y0059		CCM01-2013LFT R201	Y1112-2013B LFT

- Notes :**
- 1 - Termination to PCB : SMT reflow soldering  
Temperature/time profile according to :  
C&K PS-LF-001 specification.  
Since there are no boardlocks , the connector must be held in place on the PCB across the top face of the cover.
  - 2 - Level of each contact tail compared to the nearest plastic stand-off.  
Coplanarity of metal soldering surfaces : 0,15 mm
  - 3 - Recommendation for solder paste thickness > 0,2 mm.
  - 4 - 2,5 microns min tin plating on contact terminal areas.  
0,1 microns min gold plating on switch terminal areas.
  - 5 - Contact forces :  
- max 0,5 N per contact with max. card thickness.  
- min 0,2 N per contact with min. card thickness.
  - 6 - Card end travel switch NO activates when the sliding card is 0,9 mm from the card stop.
  - 7 - In case of customer accessories integration requesting an interface with CCM, please ask C&K for a 3D model.

MATIERE	TRAITEMENT	PROTECTION
SAUF INDIQUE : COTES DONNEES AVANT PROTECTION BAVURES ET ARETES VIVES SUPPRIMEES	TOL LINEAIRE ± 0,1 TOL ANGULAIRE ± 2° ETAT DE SURFACE Ra	DIMENSIONS CRITIQUEES DIMENSIONS SPC LANGAGE E
DESSINE P.DAUBIGNEY VERIFIE G.PINON APPROUVE L.KUBAT	DATE 19-05-05 DATE 07/05/2008 DATE 07/05/2008	ANALYSE Y TAB. FAM. Y PROVE Y
 C&K Components BP 359 - 39105 Dole - FRANCE -		PROJECTION 1ER DREIER ECHELLE 2 DESIGNATION <b>CCM01-2013 LFT</b> Specific version 2 pegs 3,25 mm TAILLE FEUILLE NUMERO REV <b>A3 1 / 1 CU 030288Y2013 E</b>