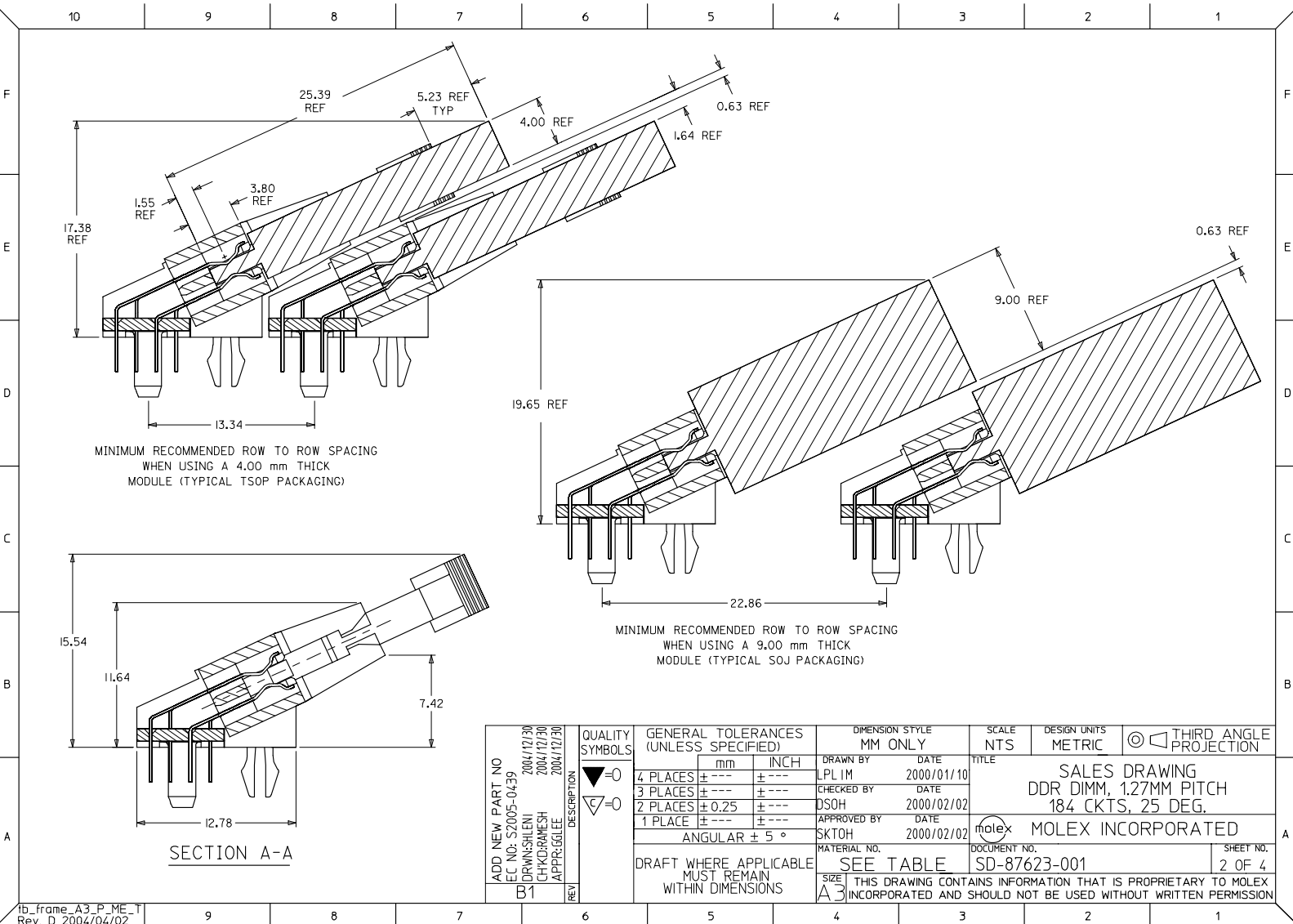


- NOTES:**
- MATERIALS:** HOUSING, BASEPLATE AND LATCH - HIGH TEMPERATURE THERMOPLASTIC, UL 94-V0  
TERMINAL AND FORKLOCK - COPPER ALLOY
  - FINISHES:** CONTACT AREA: SEE TABLE ON SHEET 4  
SOLDER TAILS: 2.54UM/100UM MIN. TIN/LEAD OR TIN OVER 1.27UM/50UM MIN. NICKEL
  - PRODUCT SPECIFICATIONS:** PS-87623-002 FOR PERFORMANCE SPECIFICATIONS.
  - DATE CODE** SHALL BE MARKED LEGIBLY AS SHOWN: XX XX  
YEAR WEEK
  - PART NUMBER** SHALL BE MARKED LEGIBLY AS SHOWN: 87623-0XXX  
REFER TO TABLE

ADD NEW PART NO IEC NO. S2005-0439 DRAWN: SHILENI CHKD: RAMESH APPR: GIGLEE	QUALITY SYMBOLS ▽=0 ▽=0	GENERAL TOLERANCES (UNLESS SPECIFIED)		DIMENSION STYLE MM ONLY		SCALE NTS	DESIGN UNITS METRIC	THIRD ANGLE PROJECTION		
		4 PLACES ± --- ± ---	3 PLACES ± --- ± ---	2 PLACES ± 0.25 ± ---	1 PLACE ± --- ± ---	DRAWN BY LPL IM	DATE 2000/01/10	SALES DRAWING DDR DIMM, 1.27MM PITCH 184 CKTS, 25 DEG.		
		ANGULAR ± 5 °				CHECKED BY DSOH	DATE 2000/02/02	MOLEX INCORPORATED		
		DRAFT WHERE APPLICABLE MUST REMAIN WITHIN DIMENSIONS				APPROVED BY SKTOH	DATE 2000/02/02	MATERIAL NO. SEE TABLE	DOCUMENT NO. SD-87623-001	SHEET NO. 1 OF 4

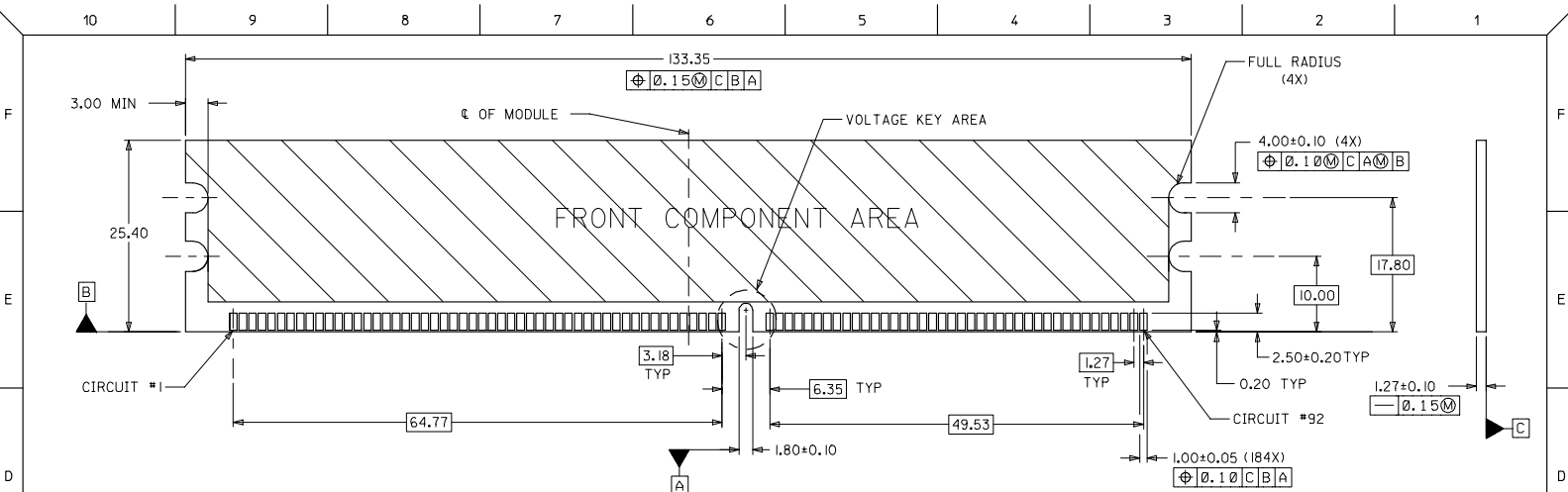


MINIMUM RECOMMENDED ROW TO ROW SPACING  
WHEN USING A 4.00 mm THICK  
MODULE (TYPICAL TSOP PACKAGING)

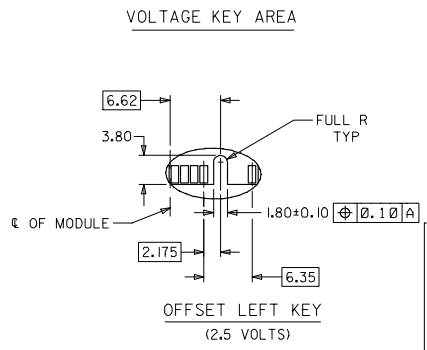
MINIMUM RECOMMENDED ROW TO ROW SPACING  
WHEN USING A 9.00 mm THICK  
MODULE (TYPICAL SOJ PACKAGING)

SECTION A-A

ADD NEW PART NO IEC NO. S2005-0439 DRWN:SHLENI CHKD:RAMESH APPR:IGILEE	2004/12/30 2004/12/30 2004/12/30	QUALITY SYMBOLS ▽=0 ▽=0	GENERAL TOLERANCES (UNLESS SPECIFIED)		DIMENSION STYLE MM ONLY		SCALE NTS	DESIGN UNITS METRIC	THIRD ANGLE PROJECTION	
			mm	INCH	DRAWN BY LPL IM	DATE 2000/01/10	SALES DRAWING DDR DIMM, 1.27MM PITCH 184 CKTS, 25 DEG. MOLEX INCORPORATED			
			4 PLACES ± ---	± ---	CHECKED BY DSOH	DATE 2000/02/02				
			3 PLACES ± ---	± ---	APPROVED BY	DATE 2000/02/02				
2 PLACES ± 0.25	± ---	SKTOH								
1 PLACE ± ---	± ---	ANGULAR ± 5 °		MATERIAL NO. SEE TABLE		DOCUMENT NO. SD-87623-001		SHEET NO. 2 OF 4		
DRAFT WHERE APPLICABLE MUST REMAIN WITHIN DIMENSIONS			SIZE A3		THIS DRAWING CONTAINS INFORMATION THAT IS PROPRIETARY TO MOLEX INCORPORATED AND SHOULD NOT BE USED WITHOUT WRITTEN PERMISSION					

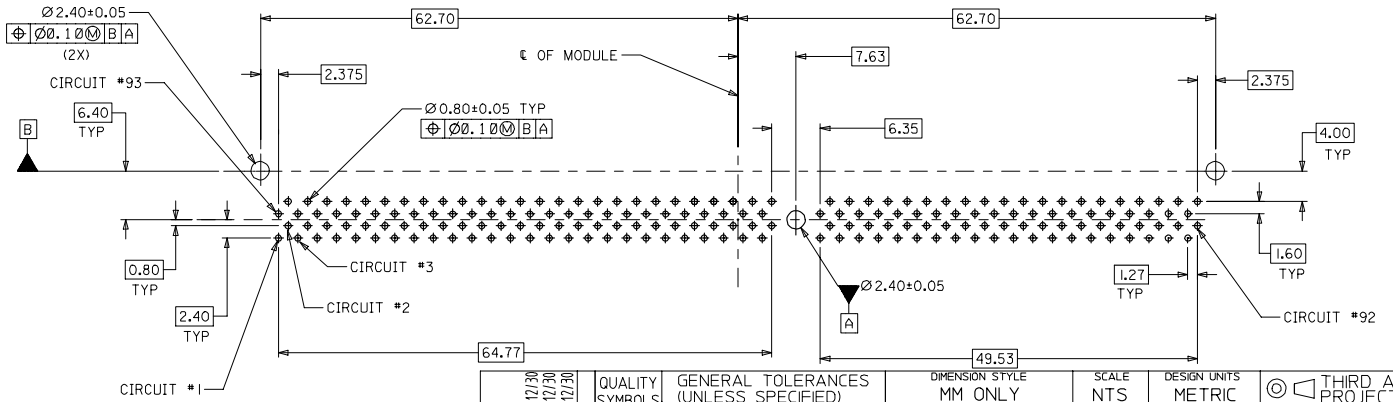


RECOMMENDED MODULE LAYOUT  
 (PER JEDEC STANDARD MO-206, 184 CKT.)  
 UNLESS OTHERWISE SPECIFIED, GENERAL TOLERANCE FOR MODULE = ±0.13



ADD NEW PART NO EC NO. S2005-0439 DRAWN: SHILENI CHKD: RAMESH APPR: GILEE	DESCRIPTION 2004/12/30 2004/12/30 2004/12/30	QUALITY SYMBOLS	GENERAL TOLERANCES (UNLESS SPECIFIED)	DIMENSION STYLE		SCALE	DESIGN UNITS	THIRD ANGLE PROJECTION
		$\nabla=0$ $\nabla=0$		MM ONLY	NTS	METRIC		
REV B1	DRAFT WHERE APPLICABLE MUST REMAIN WITHIN DIMENSIONS	mm		INCH		DRAWN BY		TITLE
		4 PLACES ± ---		± ---		LPL IM		
		3 PLACES ± ---		± ---		DATE		SALES DRAWING DDR DIMM, 1.27MM PITCH 184 CKTS, 25 DEG.
		2 PLACES ± 0.25		± ---		DATE		
		1 PLACE ± ---		± ---		DATE		MOLEX INCORPORATED
		ANGULAR ± 5 °				DATE		
		MATERIAL NO.		SEE TABLE		DOCUMENT NO.		SHEET NO. 3 OF 4
		SIZE		A3		SD-87623-001		
THIS DRAWING CONTAINS INFORMATION THAT IS PROPRIETARY TO MOLEX INCORPORATED AND SHOULD NOT BE USED WITHOUT WRITTEN PERMISSION								

PLATING OPTION	ASSEMBLY PART NUMBER	VOLTAGE KEY	CKT SIZE	TAIL LENGTH P±0.25	PEG LENGTH Q±0.25	FORK LENGTH R±0.25	RECOMMENDED PCB THICKNESS	FINISHES: CONTACT AREA	
TIN/LEAD	87623-0001	LEFT (2.5V)	184	2.79	3.18	3.18	1.57	SELECTIVE GOLD 0.38µM/15µ" MIN. GOLD OVER 1.27µM/50µ" MIN. NICKEL	
	87623-0011			3.18	4.83	3.94			
	87623-0012			3.18	3.18	3.18			
	87623-0013			3.81	4.83	4.42	2.84		
	87623-0101			2.79	3.18	3.18	1.57		SELECTIVE GOLD 0.76µM/30µ" MIN. GOLD OVER 1.27µM/50µ" MIN. NICKEL
	87623-0111			3.18	4.83	3.94			
	87623-0113			3.81	4.83	4.42			
	87623-0115			3.18	3.18	3.18	1.57		
TIN	87623-2001	LEFT (2.5V)	184	2.79	3.18	3.18	1.57	SELECTIVE GOLD 0.38µM/15µ" MIN. GOLD OVER 1.27µM/50µ" MIN. NICKEL	
	87623-2011			3.18	4.83	3.94			
	87623-2012			3.18	3.18	3.18			
	87623-2013			3.81	4.83	4.42	2.84		
	87623-2101			2.79	3.18	3.18	1.57		SELECTIVE GOLD 0.76µM/30µ" MIN. GOLD OVER 1.27µM/50µ" MIN. NICKEL
	87623-2111			3.18	4.83	3.94			
	87623-2113			3.81	4.83	4.42			
	87623-2115			3.18	3.18	3.18	1.57		



RECOMMENDED  
P.C. BOARD HOLE PATTERN  
(CONNECTOR SIDE)

ADD NEW PART NO IEC NO. S2005-0439 DRAWN: SHILENI CHKD: RAMESH APPR: GILEE	QUALITY SYMBOLS ▽=0 ▽=0	GENERAL TOLERANCES (UNLESS SPECIFIED)		DIMENSION STYLE MM ONLY		SCALE NTS	DESIGN UNITS METRIC	THIRD ANGLE PROJECTION	
		4 PLACES ± --- ± ---	3 PLACES ± --- ± ---	2 PLACES ± 0.25 ± ---	1 PLACE ± --- ± ---	DRAWN BY LPL IM	DATE 2000/01/10	SALES DRAWING DDR DIMM, 1.27MM PITCH 184 CKTS, 25 DEG.	
		ANGULAR ± 5 °		DRAFT WHERE APPLICABLE MUST REMAIN WITHIN DIMENSIONS		CHECKED BY DSOH	DATE 2000/02/02	MOLEX INCORPORATED	
		MATERIAL NO. SEE TABLE		APPROVED BY SKTOH		DATE 2000/02/02	DOCUMENT NO. SD-87623-001	SHEET NO. 4 OF 4	