

RECOMMENDED
P.C. BOARD HOLE PATTERN
(CONNECTOR SIDE)

- NOTES:
- CARD SLOT ACCEPTS $.050 \pm .004$ (1.27 ± 0.10) MODULE THICKNESS. (MEASURED OVER P.C. PADS).
 - ALL PEGS ARE INTERFERENCE FITS TO PCB UNLESS NOTED ON THE DWG.
 - REFER TO PRODUCT SPEC PS-71243-9999 FOR PERFORMANCE SPECIFICATIONS.
 - PRODUCT IS PACKAGED IN TRAYS.
 - RECOMMENDED MODULE LAYOUT SHALL BE PER JEDEC MO-167.
 - RECOMMENDED PLATING ON MODULE PADS: 30 MICROINCH/ $(0.76$ MICROMETER) MINIMUM HARD GOLD (Au) OVER 79 MICROINCH/ $(2.0$ MICROMETER) MINIMUM NICKEL (Ni).
 - PRODUCT WILL HAVE DATE CODE STAMPED ON SIDE OF HOUSING.

MATERIALS:

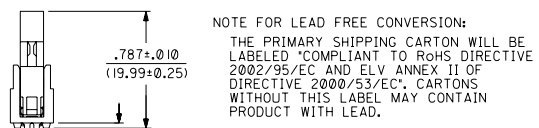
- HOUSING - GLASS FILLED LIQUID CRYSTAL POLYMER (LCP), UL 94V-0, COLOR: BLACK.
- TERMINAL - PHOSPHOR BRONZE
- LATCHES - GLASS FILLED HIGH TEMPERATURE NYLON, UL 94V-0. LATCH AT PIN #1 END IS IVORY COLOR. LATCH AT OPPOSITE END IS BLACK COLOR.

PLATING:

CONTACT AREA: GOLD (Au) FLASH: THICKNESS=2-10 MICROINCH/ $(0.05-0.25$ MICROMETER), OVER PALLADIUM-NICKEL (Pd-Ni): THICKNESS=30 MICROINCH/ $(0.76$ MICROMETER) MINIMUM.

SOLDER TAILS: TIN (Sn): THICKNESS=150 MICROINCH/ $(3.81$ MICROMETER) MINIMUM.

UNDERPLATE: NICKEL (Ni) OVER ENTIRE CONTACT.



SECTION "X-X"
SCALE 4:1

NOTE FOR LEAD FREE CONVERSION:
THE PRIMARY SHIPPING CARTON WILL BE LABELED "COMPLIANT TO ROHS DIRECTIVE 2002/95/EC AND ELV ANNEX II OF DIRECTIVE 2000/53/EC". CARTONS WITHOUT THIS LABEL MAY CONTAIN PRODUCT WITH LEAD.

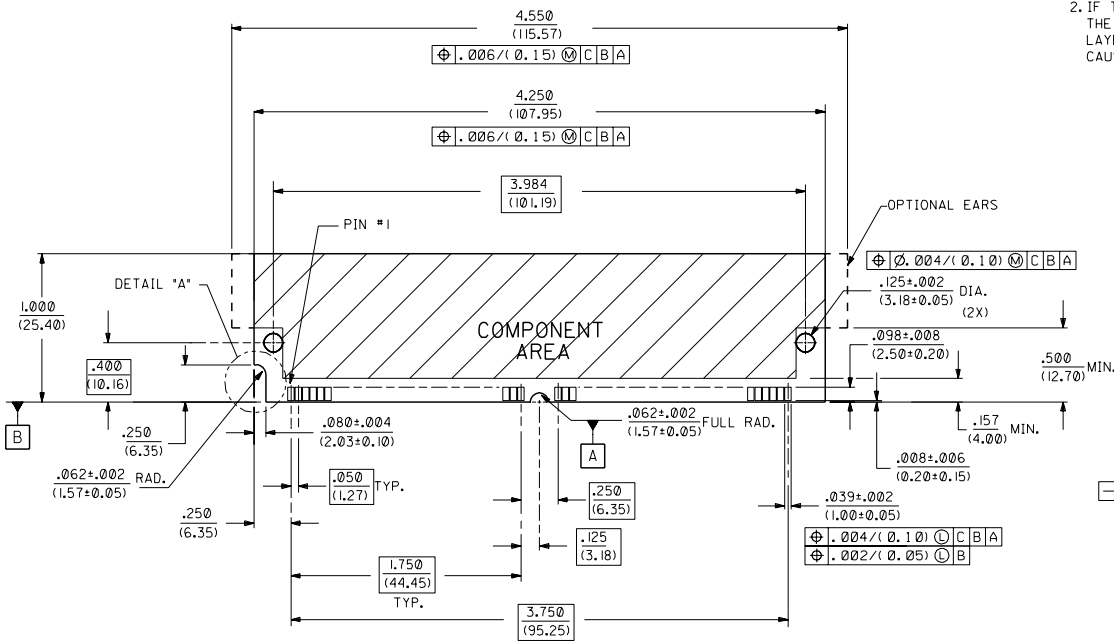
F1	ADD LEAD FREE NOTE ECN# LCP2004-1732 DMORGAN 04/03/08
F	CHG Sn-Pb THICKNESS ECN# UDT1999-0454 DMORGAN 99/08/09
E	REVISED PER ECN# UB1533 96-10-1 LAURX
D	REVISED PER ECN# UB0883 9-15-96 JCL
C	RELEASED PER ECN# UB0836 1-19-96 JCL
2	E
1	F1
MFG. SH.	REV. LTR.
REVISIONS	

DIMENSIONS SHOWN (METRIC) INCH		REVISIONS ONLY ON CAD SYSTEM	
TOLERANCES UNLESS SPECIFIED		TITLE	
TOLERANCES ANGULAR ± 0.2°		.050/(1.27) PITCH DIMM	
INCH METRIC		144 CKT SINGLE LOW KEY	
3 PLACES ± .005	---	SALES DRAWING	
2 PLACES ± .01	± 0.13	MOLEX INCORPORATED	
1 PLACE ---	± 0.25	SHEET NO. DATE	
DRAFT 1 WHERE APPLICABLE MUST REMAIN WITHIN DIMENSIONS		1 OF 2 1/19/96	
DRG. JCL	CHKD. DCB	PART NO. 71243-0009	
APP'D. JCL	SCALE 2:1	FILE NAME S124339A	
NO DIMENSIONS CONTAINING INFORMATION THAT IS PROHIBITED BY THE MOLEX INC. AND SHOULD NOT BE USED WITHOUT WRITTEN PERMISSION.		REV. CP	

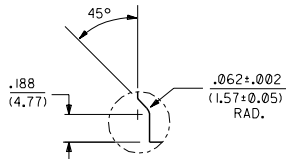
71243

NOTES:

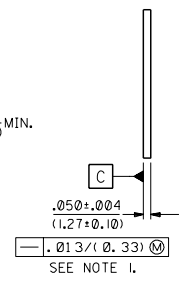
1. STRAIGHTNESS OF MODULE APPLIES TO THE AREA FROM THE BOTTOM OF THE CARD UP .157/(4.00).
2. IF TIE BARS ARE ATTACHED TO PADS, THE TIE BAR SHOULD BE ON AN INTERNAL LAYER, SO THAT THE REMNANT CANNOT CAUSE DAMAGE TO THE CONTACTS.



RECOMMENDED MODULE LAYOUT



PREFERRED DETAIL "A"



E	SEE SHEET 1
D	SEE SHEET 1
C	SEE SHEET 1

MFG. SH. REV. LTR. REVISIONS		REVISION ONLY ON CAD SYSTEM									
DIMENSIONS SHOWN METRIC INCH UNLESS OTHERWISE SPECIFIED TOLERANCES ANGULAR 1/2°		TITLE									
<table border="1"> <tr> <th>INCH</th> <th>METRIC</th> </tr> <tr> <td>2 PLACE ± .005</td> <td>---</td> </tr> <tr> <td>1 PLACE ± .01</td> <td>± 0.13</td> </tr> <tr> <td>1 PLACE ---</td> <td>± 0.25</td> </tr> </table>		INCH	METRIC	2 PLACE ± .005	---	1 PLACE ± .01	± 0.13	1 PLACE ---	± 0.25	.050/(1.27) PITCH DIMM 144 CKT SINGLE LOW KEY SALES DRAWING	
INCH	METRIC										
2 PLACE ± .005	---										
1 PLACE ± .01	± 0.13										
1 PLACE ---	± 0.25										
DRAFT WHERE APPLICABLE MUST REMAIN WITHIN DIMENSIONS		MOLEX INCORPORATED U.S.A. SHEET NO. 2 DATE 1/19/96									
DWG. BY: JCL APP'D. BY: [Signature]		PART NO. 71243-0009 FILE NAME: S704398.DWG SCALE: 2:1									
		THIS DRAWING CONTAINS INFORMATION THAT IS PROPRIETARY TO MOLEX INC. AND SHOULD NOT BE USED WITHOUT WRITTEN PERMISSION. CP C									