

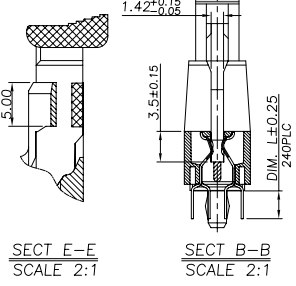
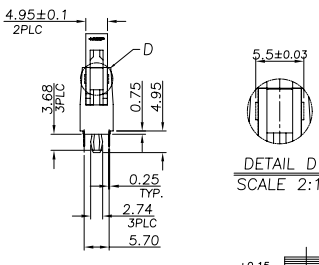
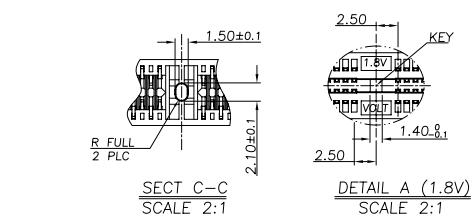
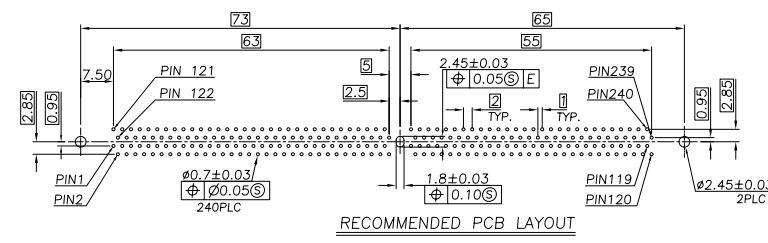
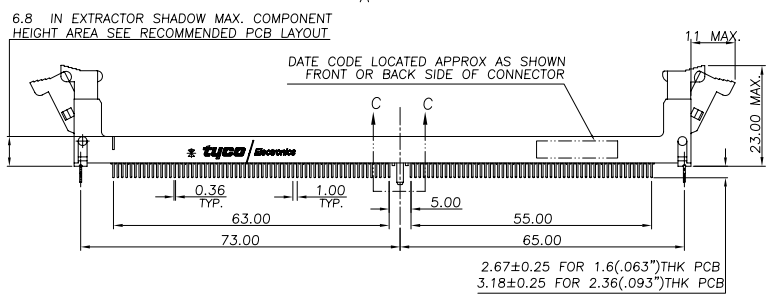
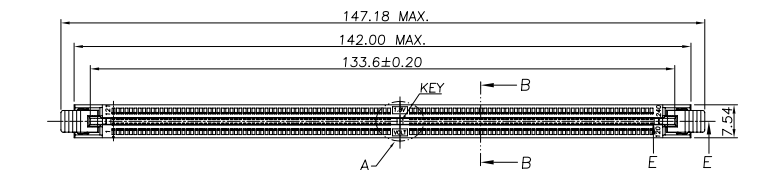
4 3 2 1

THIS DRAWING IS UNPUBLISHED. RELEASED FOR PUBLICATION AUG. 2006.
 © COPYRIGHT BY TYCO ELECTRONICS CORPORATION. ALL RIGHTS RESERVED.

LOC	DIST	REVISIONS			DATE	DWN	APVD
DW		P	LTR	DESCRIPTION			
		G2		REVISED (ECR-08-030438)	02DEC'08	EL	WK

- NOTES:
1. MATERIAL:
 - 1.1 HOUSING: THERMOPLASTIC(PA46), UL94V-0; COLOR:SEE TABLE.
 - 1.2 EXTRACTOR: THERMOPLASTIC, UL94V-0; COLOR:SEE TABLE.
 - 1.3 CONTACTS: PHOSPHOR BRONZE
 - 1.4 BOARDLOCK: BRASS
 2. FINISH:
 - 2.1 CONTACT: GOLD PLATING ON CONTACT AREA, 100µ" MIN. MATTE TIN PLATING ON SOLDER TAIL AREA, 50µ" MIN. NICKEL UNDERPLATING OVERALL.
 - 2.2 BOARDLOCK: 100µ" MIN. MATTE TIN PLATING ON SOLDER TAILS, 50µ" MIN. NICKEL UNDERPLATING OVERALL.
 3. WAVE SOLDER CAPABLE TO 265°C PER TE SPEC. 109-202, CONDITION B.

EXTRACTOR COLOR	HSG COLOR	DIM. L	COLD PLATING	PART NUMBER
BLACK	BLACK	3.18	30µ" 4-	-7
			G/F 15µ" 3-	-8
			G/F 30µ" 3-	-7
		2.67	G/F 15µ" 4-	-6
			G/F 30µ" 9-	-6
			G/F 15µ" 9-	-4
			G/F 9µ" 9-	-3
			G/F 30µ" 9-	-5
			G/F 15µ" 9-	-2
			G/F 9µ" 9-	-1
			G/F 30µ" 8-	-6
			G/F 15µ" 8-	-4
			G/F 9µ" 8-	-3
			G/F 30µ" 8-	-5
			G/F 15µ" 8-	-2
			G/F 9µ" 8-	-1
			G/F 30µ" 7-	-6
			G/F 15µ" 7-	-4
			G/F 9µ" 7-	-3
			G/F 30µ" 7-	-5
			G/F 15µ" 7-	-2
			G/F 9µ" 7-	-1
			G/F 30µ" 6-	-6
			G/F 15µ" 6-	-4
			G/F 9µ" 6-	-3
			G/F 30µ" 6-	-5
			G/F 15µ" 6-	-2
			G/F 9µ" 6-	-1
			G/F 30µ" 5-	-6
			G/F 15µ" 5-	-4
			G/F 9µ" 5-	-3
			G/F 30µ" 5-	-5
			G/F 15µ" 5-	-2
			G/F 9µ" 5-	-1
			G/F 30µ" 4-	-6
			G/F 15µ" 4-	-4
			G/F 9µ" 4-	-3
			G/F 30µ" 4-	-5
			G/F 15µ" 4-	-2
			G/F 9µ" 4-	-1
			G/F 30µ" 3-	-6
			G/F 15µ" 3-	-4
			G/F 9µ" 3-	-3
			G/F 30µ" 3-	-5
			G/F 15µ" 3-	-2
			G/F 9µ" 3-	-1
			G/F 30µ" 2-	-6
			G/F 15µ" 2-	-4
			G/F 9µ" 2-	-3
			G/F 30µ" 2-	-5
			G/F 15µ" 2-	-2
			G/F 9µ" 2-	-1
			G/F 30µ" 1-	-6
			G/F 15µ" 1-	-4
			G/F 9µ" 1-	-3
			G/F 30µ" 1-	-5
			G/F 15µ" 1-	-2
			G/F 9µ" 1-	-1
			G/F 30µ" 2-	-7
			G/F 15µ" 2-	-4
			G/F 9µ" 2-	-3
			G/F 30µ" 1-	-6
			G/F 15µ" 1-	-4
			G/F 9µ" 1-	-3
			G/F 30µ" 1-	-5
			G/F 15µ" 1-	-2
			G/F 9µ" 1-	-1
			G/F 30µ" 1-	-7
			G/F 15µ" 1-	-4
			G/F 9µ" 1-	-3
			G/F 30µ" 1-	-5
			G/F 15µ" 1-	-2
			G/F 9µ" 1-	-1
			G/F 30µ" 1-	-6
			G/F 15µ" 1-	-4
			G/F 9µ" 1-	-3
			G/F 30µ" 1-	-5
			G/F 15µ" 1-	-2
			G/F 9µ" 1-	-1
			G/F 30µ" 1-	-7
			G/F 15µ" 1-	-4
			G/F 9µ" 1-	-3
			G/F 30µ" 1-	-5
			G/F 15µ" 1-	-2
			G/F 9µ" 1-	-1
			G/F 30µ" 1-	-6
			G/F 15µ" 1-	-4
			G/F 9µ" 1-	-3
			G/F 30µ" 1-	-5
			G/F 15µ" 1-	-2
			G/F 9µ" 1-	-1
			G/F 30µ" 1-	-7
			G/F 15µ" 1-	-4
			G/F 9µ" 1-	-3
			G/F 30µ" 1-	-5
			G/F 15µ" 1-	-2
			G/F 9µ" 1-	-1



THIS DRAWING IS A CONTROLLED DOCUMENT.

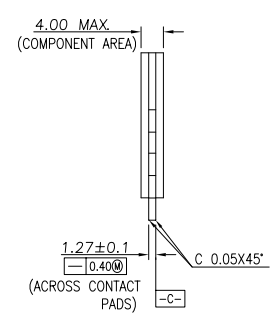
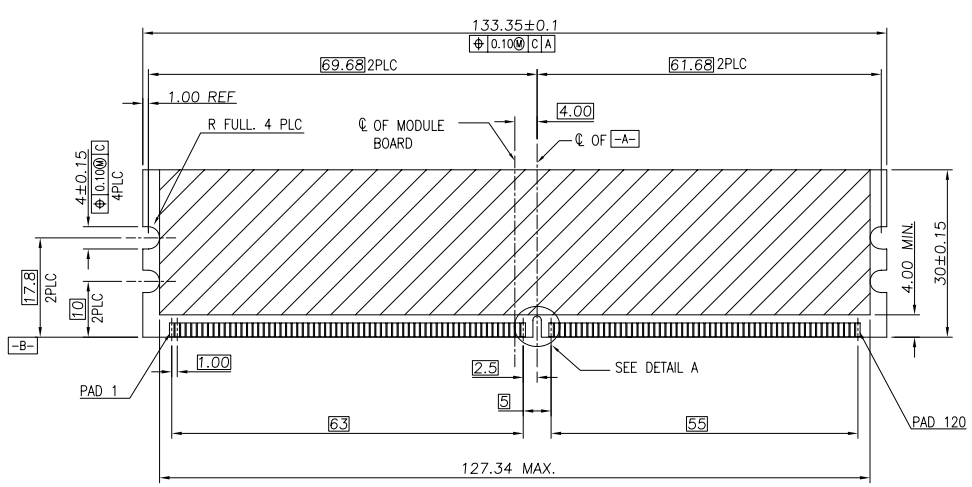
DIMENSIONS: MM	TOLERANCES UNLESS OTHERWISE SPECIFIED: 0 PLC ± - 1 PLC ± 0.3 2 PLC ± 0.2 3 PLC ± - 4 PLC ± - ANGLES ± 3'	DWN S HOU 24AUG2007 DW W.J. KE 24AUG2007 APVD W.J. KE 24AUG2007 PRODUCT SPEC 108-57376 QUALIFICATION TEST REPORT 501-57407	DIM. L	EXTRACTOR COLOR	HSG COLOR	COLD PLATING	PART NUMBER
MATERIAL	FINISH	WEIGHT 9.4 GRAMS	SIZE A3	CAGE CODE 00779	DRAWING NO. C=1775802	RESTRICTED TO	
SEE NOTE	SEE NOTE	CUSTOMER DRAWING	SCALE	SHEET 1 of 3	REV G2		

NAME: DDRII 240PIN SOCKET CONNECTOR

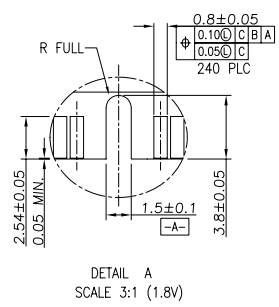
Tyco Electronics Corporation, Taipei, Taiwan

THIS DRAWING IS UNPUBLISHED. RELEASED FOR PUBLICATION AUG. 2006.
 © COPYRIGHT BY TYCO ELECTRONICS CORPORATION. ALL RIGHTS RESERVED.

LOC		DIST		REVISIONS			
P	LTR	DESCRIPTION	DATE	DWN	APVD		
DW		SEE SHEET 1					



PLUG COMPONENT:DDR II 240P FUNCTION CARD



THIS DRAWING IS A CONTROLLED DOCUMENT.		DWN	Tyco Electronics Corporation Taipei, Taiwan	
DIMENSIONS: MM		CHK	Tyco Electronics	
TOLERANCES UNLESS OTHERWISE SPECIFIED:		APVD	NAME	
0 PLC ± 0.1		PRODUCT SPEC	DDR II 240PIN SOCKET CONNECTOR	
1 PLC ± 0.05		QUALIFICATION TEST REPORT	SIZE	CAGE CODE
2 PLC ± 0.02		WEIGHT	A3	00779
3 PLC ± 0.005		CUSTOMER DRAWING	DRAWING NO	C=1775802
4 PLC ± --		SCALE	RESTRICTED TO	
ANGLES ± 0.5°		SHEET	2 of 3	
MATERIAL	FINISH	REV G2		
SEE NOTE	SEE NOTE			

AMP 1470-19 REV 31MAR2000

4

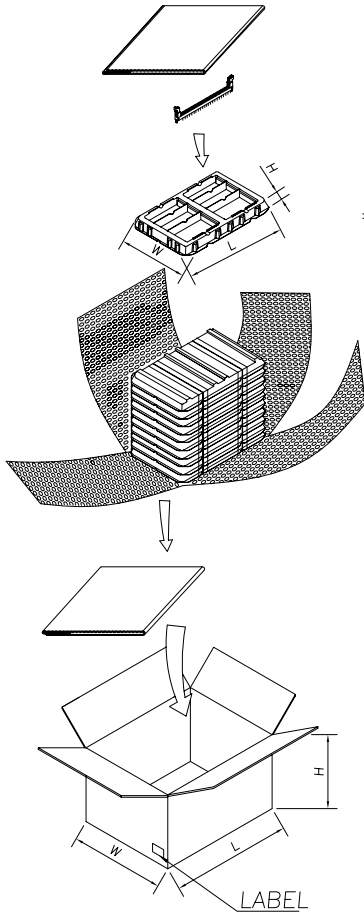
3

2

1

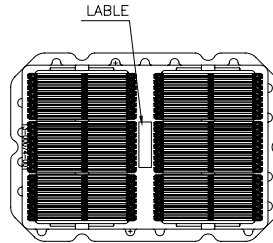
THIS DRAWING IS UNPUBLISHED. RELEASED FOR PUBLICATION AUG. 2006.
 © COPYRIGHT BY TYCO ELECTRONICS CORPORATION. ALL RIGHTS RESERVED.

LOC		DIST		REVISIONS			
P	LTR	DESCRIPTION		DATE	DWN	APVD	
		SEE SHEET 1					



TRAY

- NOTES :
- DIMENSION :
 - TRAY: L=363, W=255, H=33
 - SHIPPING BOX: L=380, W=270, H=340
 - QUANTITY :
 - PRIMARY PACKING: 50 PCS/TRAY
 - SECONDARY PACKING: 10 TRAYS/BOX(500PCS)
 - WEIGHT :
 - NET WEIGHT : 4.7Kg
 - GROSS WEIGHT : 6.95Kg



TRAY LAYOUT

SHIPPING BOX

THIS DRAWING IS A CONTROLLED DOCUMENT.		DWN	Tyco Electronics Corporation													
		CHK	Tyco Electronics Taipei, Taiwan													
DIMENSIONS: MM		APVD	NAME													
<table border="1"> <tr><td>0 PLC</td><td>±</td></tr> <tr><td>1 PLC</td><td>±</td></tr> <tr><td>2 PLC</td><td>±</td></tr> <tr><td>3 PLC</td><td>±</td></tr> <tr><td>4 PLC</td><td>±</td></tr> <tr><td>ANGLES</td><td>±</td></tr> </table>		0 PLC	±	1 PLC	±	2 PLC	±	3 PLC	±	4 PLC	±	ANGLES	±	PRODUCT SPEC		DDRII 240PIN SOCKET CONNECTOR
0 PLC	±															
1 PLC	±															
2 PLC	±															
3 PLC	±															
4 PLC	±															
ANGLES	±															
MATERIAL		QUALIFICATION TEST REPORT		RESTRICTED TO												
SEE NOTE		FINISH	SEE NOTE	SEE NOTE												
		WEIGHT	SIZE	CAGE CODE												
			A3	00779												
		DRAWING NO		C=1775802												
		CUSTOMER DRAWING		SCALE												
				SHEET 3 of 3												
				REV G2												