

4

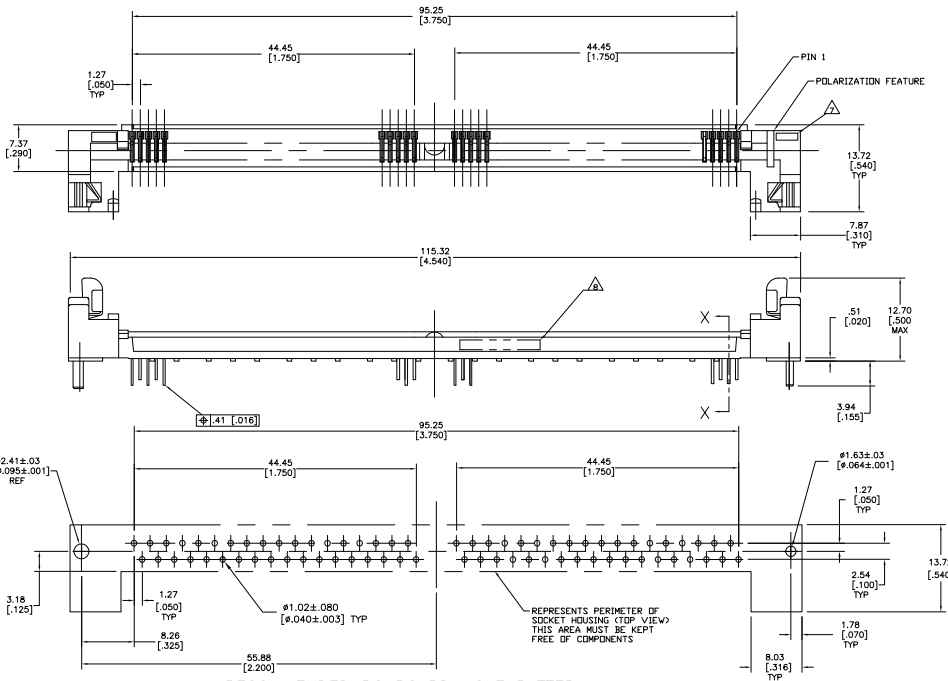
3

2

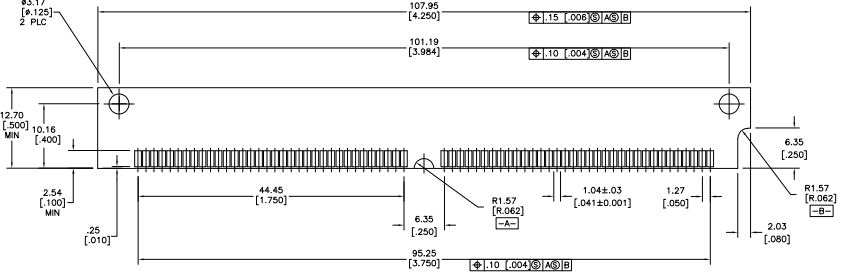
1

THIS DRAWING IS UNPUBLISHED. RELEASED FOR PUBLICATION. BY TYCO ELECTRONICS CORPORATION. ALL RIGHTS RESERVED.

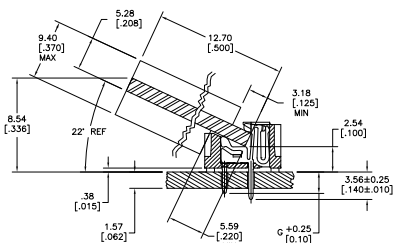
LOC	DIST	REVISIONS					
GP	00	F	LR	DESCRIPTION	DATE	BY	APP'D
		N		REVISED PER ECO-06-007841	19 JUL 06	JDP	MB



RECOMMENDED PC BOARD HOLE PATTERN SOCKET SIDE



- △ HOUSING MATERIAL: LIQUID CRYSTAL POLYMER.
- △ CONTACT MATERIAL: PHOS. BRONZE.
- △ LATCH MATERIAL: STAINLESS STEEL.
- △ CONTACT PLATE: .00508 [0.000200] MIN TIN/LEAD OVER .00127 [0.000050] MIN NICKEL.
- 5. IN ADDITION TO THOSE RECOMMENDED "SMM" PC BOARD DIMENSIONS AND TOLERANCES SHOWN, ALL JEDEC SPECIFICATIONS APPLY AS SHOWN ON MO-116, ISSUE A.
- 6. RECOMMENDED MATING SIMM TAB METALLURGY: .00762 [0.000300] MIN TIN/LEAD OVER .00127 [0.000050] MIN NICKEL.
- △ "S" IDENTIFICATION SHALL BE LOCATED IN APPROX LOCATION SHOWN.
- △ DATE CODE INFORMATION (YEAR WEEK), LOCATED APPROXIMATELY AS SHOWN ON OPPOSITE SIDE.



SECTION X-X  
SCALE 5:1  
(BOARD SHOWN FOR REF ONLY)

3.56 [0.140]	72	822330-4
2.92 [0.115]	72	822330-3
G± 0.25 [0.010]	NO. OF POSNS	PART NUMBER

THIS DRAWING IS A CONTROLLED DOCUMENT.

DIMENSIONS: mm [INCHES]	TO DIMENSIONS UNLESS OTHERWISE SPECIFIED:	0 PLC ± . -	1 PLC ± . -	2 PLC ± . -	3 PLC ± . -	4 PLC ± . -	ANGLES ± . -	FINISH	APPROVED BY: [Signature]	DATE: [Date]
MATERIAL: [Material]			FINISH: [Finish]			MATERIAL: [Material]			DATE: [Date]	

TYCO ELECTRONICS CORPORATION  
Harrisburg, PA 17105-3608

CONNECTOR, MICRO-EDGE, .050 LP, TIN PL. W/ METAL LATCH

SIZE: A2 CASE CODE: C-822330 DRAWING NO: 00779

CUSTOMER DRAWING SCALE: 4:1 SHEET: 1 of 1 REV: N

AMP 1471-9 REV 31MM2000

822330

A